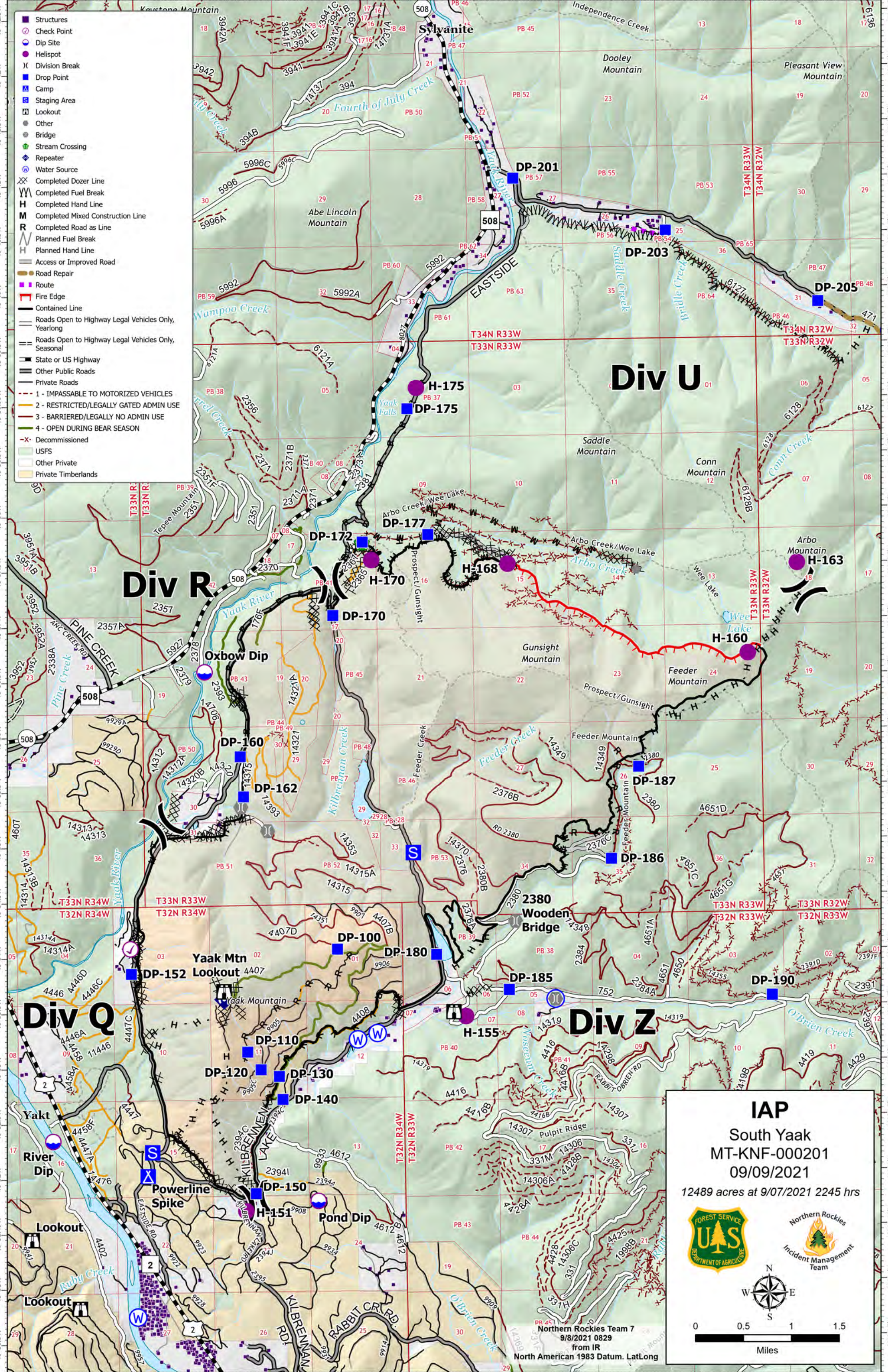


- Structures
- Check Point
- Dip Site
- Helispot
- ⌘ Division Break
- Drop Point
- ⊠ Camp
- ⊠ Staging Area
- ⊠ Lookout
- Other
- Bridge
- Stream Crossing
- Repeater
- Water Source
- ⊠ Completed Dozer Line
- ⊠ Completed Fuel Break
- ⊠ Completed Hand Line
- ⊠ Completed Mixed Construction Line
- ⊠ Completed Road as Line
- ⊠ Planned Fuel Break
- ⊠ Planned Hand Line
- ⊠ Access or Improved Road
- ⊠ Road Repair
- ⊠ Route
- ⊠ Fire Edge
- ⊠ Contained Line
- ⊠ Roads Open to Highway Legal Vehicles Only, Yearlong
- ⊠ Roads Open to Highway Legal Vehicles Only, Seasonal
- ⊠ State or US Highway
- ⊠ Other Public Roads
- ⊠ Private Roads
- ⊠ 1 - IMPASSABLE TO MOTORIZED VEHICLES
- ⊠ 2 - RESTRICTED/LEGALLY GATED ADMIN USE
- ⊠ 3 - BARRIERED/LEGALLY NO ADMIN USE
- ⊠ 4 - OPEN DURING BEAR SEASON
- ⊠ Decommissioned
- ⊠ USFS
- ⊠ Other Private
- ⊠ Private Timberlands



IAP
 South Yaak
 MT-KNF-000201
 09/09/2021
 12489 acres at 9/07/2021 2245 hrs

0 0.5 1 1.5
Miles

Northern Rockies Team 7
 9/8/2021 0829
 from IR
 North American 1983 Datum. LatLong