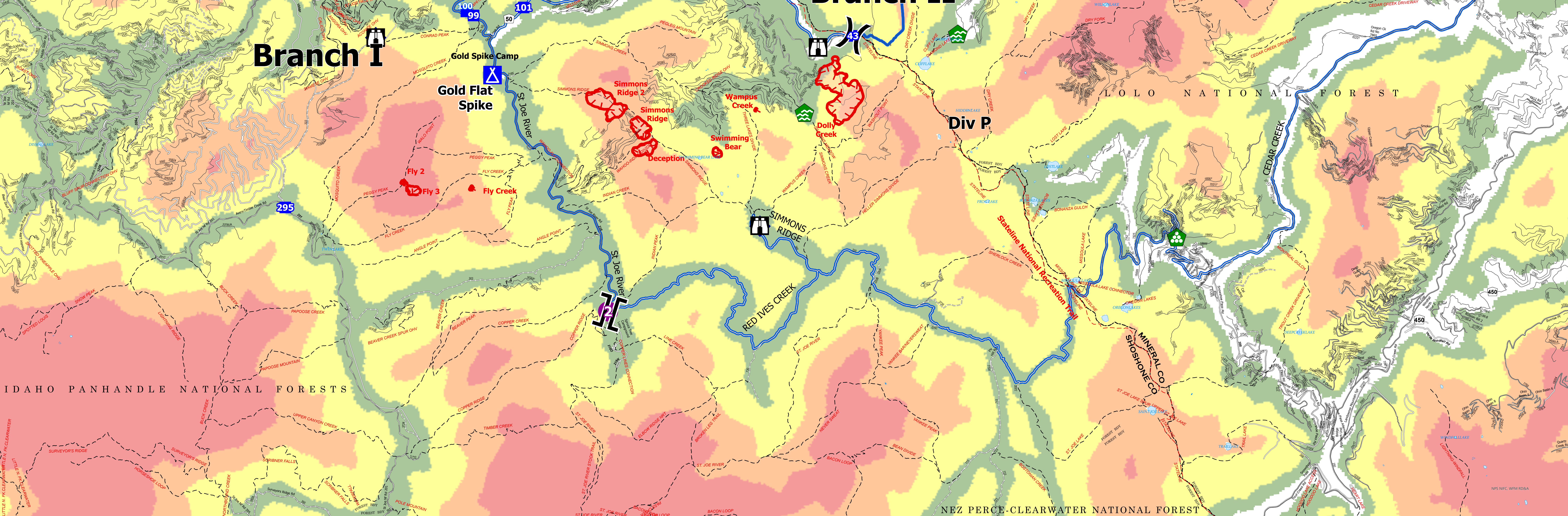


*****TRAVEL TIME FROM ICP*****							
Name	Complete Address	LAT	DD MM MMM N	LONG	DD MM MMM W	Travel Times	Phone
						AIR	GRND
MINERAL COMMUNITY HOSPITAL	1208 6 th Ave. Missoula, MT 59802	LAT: 47° 11.135' N		LONG: 114° 52.647' W		15 mins.	20 mins.
ST. PATRICK HOSPITAL	500 W. Broadway St. Missoula, MT 59802	LAT: 47° 36.189' N		LONG: 114° 19.484' W		45 mins.	60 mins.
COMMUNITY MEDICAL CENTER	2827 Fort Missoula Rd. Missoula, MT 59804	LAT: 46° 50.910' N		LONG: 114° 2.865' W		45 mins.	70 mins.
KOOTENAI HEALTH	2003 Kootenai Health Way. Coeur d'Alene, ID 83814	LAT: 47° 41.721' N		LONG: 115° 0.781' W		40 mins.	95 mins.
HARBOR-VIEW MEDICAL CENTER	325 North Ave. Shoshone, ID 83454	LAT: 47° 36.680' N		LONG: 112° 18.494' W		2.5 hrs.	2 hrs.
PROVIDENCE SACRED HEART MEDICAL CENTER	101 W. 8 th Ave. Shoshone, ID 83454	LAT: 47° 36.846' N		LONG: 112° 18.737' W		2 hrs.	2 hrs.

FC Point Type	Label	Latitude WGS84 DDM	Longitude WGS84 DDM
Helispot	2	47° 03.37215257' N	115° 21.13283324' W
Camp	Gold Flat Spike	47° 08.28245064' N	115° 24.46504314' W
Helispot	1	47° 18.36798672' N	115° 06.6653114' W
Internet Access		47° 13.68698597' N	115° 18.22521404' W
Internet Access		47° 13.9753636' N	115° 18.91783311' W
Drop Point	102	47° 10.04366194' N	115° 22.80176343' W
Lookout		47° 05.06691354' N	115° 16.51188071' W
Drop Point	118	47° 13.96448507' N	115° 29.42298604' W
Drop Point	109	47° 12.10740997' N	115° 21.45059696' W
Lookout		47° 08.70778336' N	115° 14.63468473' W
Drop Point	43	47° 08.92959792' N	115° 13.57407225' W
Internet Access		47° 05.05690878' N	115° 16.50365392' W
Lookout		47° 09.10085626' N	115° 21.96434311' W
Internet Access		47° 09.10085626' N	115° 27.96443401' W
Division Break		47° 12.11620661' N	115° 31.04149971' W
Branch Break		47° 13.65634588' N	115° 18.27638254' W
Division Break		47° 08.83222038' N	115° 11.34945091' W
Drop Point		47° 03.30747233' N	115° 21.09465664' W
Drop Point	108	47° 11.2837528' N	115° 29.29508662' W
Drop Point	104	47° 10.18292672' N	115° 25.33944890' W
Drop Point	99	47° 09.51459336' N	115° 25.00055328' W
Hazard		47° 10.3669213' N	115° 25.30532916' W
Drop Point	100	47° 09.60436463' N	115° 25.21367362' W
Drop Point	295	47° 05.64333373' N	115° 30.78971144' W
Drop Point	101	47° 09.65986108' N	115° 23.48438666' W
Drop Point	107	47° 10.30284886' N	115° 21.45235707' W
Drop Point	115	47° 11.82659887' N	115° 22.02446662' W
Drop Point	125	47° 14.05443781' N	115° 20.90936271' W
Drop Point	117	47° 14.56194986' N	115° 27.72776720' W
Drop Point	116	47° 14.65462821' N	115° 26.48753094' W
Landing or Log Deck		47° 14.76082207' N	115° 23.56803249' W
Drop Point	15	47° 13.62990534' N	115° 18.24258471' W
Landing or Log Deck		47° 04.63125268' N	115° 03.96460768' W
Drop Point	103	47° 11.00393236' N	115° 21.82496010' W
Water Development or Draft Site		47° 17.78988404' N	115° 07.36217144' W
Water Development or Draft Site		47° 16.74166778' N	115° 07.51116205' W
Water Development or Draft Site		47° 13.26668999' N	115° 16.05182931' W
Water Development or Draft Site		47° 10.36273362' N	115° 10.78128668' W
Water Development or Draft Site		47° 10.08885386' N	115° 09.08323204' W
Water Development or Draft Site		47° 08.91801774' N	115° 10.41154900' W
Water Development or Draft Site		47° 07.37059691' N	115° 15.08804637' W
Drop Point	106	47° 14.28202931' N	115° 19.18480655' W
Drop Point	110	47° 15.13432325' N	115° 18.2496010' W
Drop Point	112	47° 15.61820209' N	115° 21.43873338' W
Drop Point	113	47° 15.62819683' N	115° 22.84046659' W
Division Break		47° 14.7570616' N	115° 23.57964823' W
Hazard Tree		47° 15.51484881' N	115° 25.46799317' W
Incident Command Post		47° 18.00576236' N	115° 05.57063872' W
Landing or Log Deck		47° 14.7566870' N	115° 22.05432731' W



Steline Complex
 ID-IPF-000504
 07/21/2021

MEDICAL TRANSPORT MAP

- Helispot
- Division Break
- Branch
- Incident Command Post
- Drop Point
- Camp
- Lookout
- Water Development or Draft Site
- Landing or Log Deck
- Hazard Tree
- Internet Access
- Hazard
- Fire Edge
- Wildfire Daily Fire Perimeter
- Trail
- National Designated Trail
- Tunnel; Bridge
- Paved Road
- Gravel Road
- Dirt Road
- Unimproved Roads
- Closed Roads
- Primary Highway
- Secondary Highway
- Paved Roads
- Dirt (Not Paved)
- Trans_Roads_Census
- Transportation Routes
- Railroad
- Estimated Ground Evacuation Time (Fine)

Miles 0 1 2 4
 Kilometers 0 1 2 4



MEDICAL TRANSPORT MAP