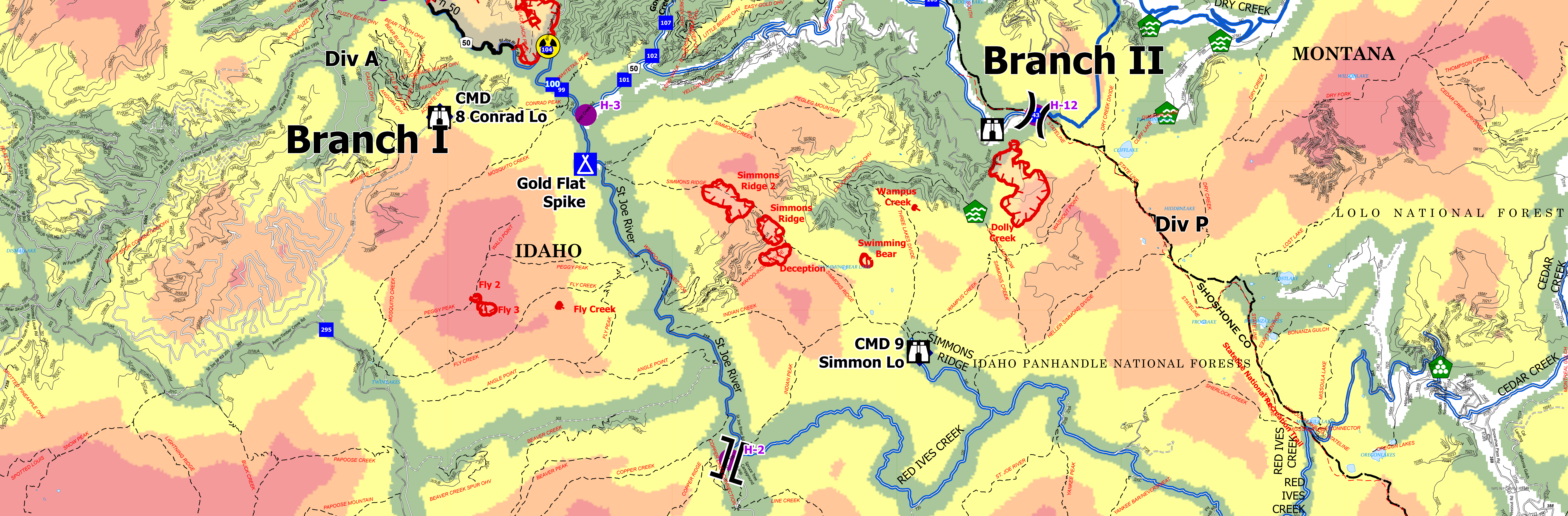


*****TRAVEL TIME FROM ICP*****						
Name	Complete Address	LAT	DD °MM MM'N	LONG	DD °MM MM'W	Level of Care
MINERAL COMMUNITY HOSPITAL	1208 6th Ave., Superior, MT 59872	LAT: 47° 11.135' N	LONG: 114° 52.647' W	15 mins.	20 mins.	Level 3
ST. PATRICK HOSPITAL	500 W. Broadway, Missoula, MT 59802	LAT: 46° 52.525' N	LONG: 117° 59.985' W	45 mins.	60 mins.	Level 2 TRAUMA
COMMUNITY MEDICAL CENTER	2827 Fort Missoula Rd, Missoula, MT 59804	LAT: 46° 50.819' N	LONG: 114° 2.865' W	45 mins.	70 mins.	Level 2 TRAUMA
KOOTENAI HEALTH	2013 Kootenai Health Way, Coeur d'Alene, ID 83814	LAT: 47° 41.721' N	LONG: 117° 47.861' W	40 mins.	95 mins.	Level 2 TRAUMA
HARBOR VIEW MEDICAL CENTER	325 North Ave., Seattle, WA 98104	LAT: 47° 36.100' N	LONG: 122° 19.494' W	2.5 hrs.	7 hrs.	Level 1 TRAUMA BURR CENTER
PROVIDENCE SACRED HEART MEDICAL CENTER	101 W. 8th Ave., Spokane, WA 99204	LAT: 47° 38.840' N	LONG: 117° 24.782' W	60 mins.	2 hrs.	Level 2 TRAUMA

FC Point Type	Label	Latitude WGS84 DDM	Longitude WGS84 DDM
Helispot	2	47° 03.372525' N	115° 21.132824' W
Camp	1	47° 08.282456' N	115° 24.460414' W
Gold Flat Spike	1	47° 18.367878' N	115° 06.653192' W
Internet Access	1	47° 13.648497' N	115° 18.252104' W
Internet Access	1	47° 13.397536' N	115° 16.917631' W
Drop Point	102	47° 10.943616' N	115° 22.944301' W
Lookout	1	47° 05.066913' N	115° 16.511680' W
Drop Point	118	47° 13.964400' N	115° 29.429680' W
Drop Point	109	47° 12.104907' N	115° 31.645990' W
Lookout	1	47° 08.707313' N	115° 14.634647' W
Drop Point	43	47° 08.929979' N	115° 13.574072' W
Internet Access	1	47° 12.162661' N	115° 31.645990' W
Lookout	1	47° 09.108526' N	115° 27.964340' W
Internet Access	1	47° 09.108526' N	115° 27.964340' W
Division Break	1	47° 12.162661' N	115° 31.645990' W
Branch Break	1	47° 13.653588' N	115° 18.243824' W
Division Break	1	47° 08.522208' N	115° 13.569591' W
Division Break	1	47° 03.372525' N	115° 21.132824' W
Drop Point	108	47° 11.226752' N	115° 29.259842' W
Drop Point	104	47° 10.182927' N	115° 25.394989' W
Drop Point	99	47° 09.516436' N	115° 20.825328' W
Hazard	1	47° 10.236692' N	115° 25.205532' W
Drop Point	100	47° 09.604363' N	115° 25.213673' W
Drop Point	295	47° 05.833373' N	115° 30.871141' W
Drop Point	101	47° 09.698616' N	115° 23.484366' W
Drop Point	107	47° 10.582888' N	115° 22.452370' W
Drop Point	115	47° 10.582888' N	115° 22.452370' W
Drop Point	125	47° 14.094478' N	115° 20.909327' W
Helispot	5	47° 13.966143' N	115° 29.598020' W
Drop Point	117	47° 14.094478' N	115° 20.909327' W
Drop Point	116	47° 14.654282' N	115° 26.487320' W
Landing or Log Deck	114	47° 14.940574' N	115° 25.074407' W
Drop Point	114	47° 14.940574' N	115° 25.074407' W
Drop Point	15	47° 13.429053' N	115° 18.242847' W
Landing or Log Deck	103	47° 04.631228' N	115° 09.964078' W
Drop Point	105	47° 11.626917' N	115° 17.669077' W
Drop Point	103	47° 10.873586' N	115° 16.015891' W
Water Development or Draft Site	1	47° 17.889840' N	115° 07.262174' W
Water Development or Draft Site	1	47° 16.918278' N	115° 11.605778' W
Water Development or Draft Site	1	47° 13.266609' N	115° 16.051829' W
Water Development or Draft Site	1	47° 10.362736' N	115° 10.781286' W
Water Development or Draft Site	1	47° 10.688136' N	115° 09.822344' W
Water Development or Draft Site	1	47° 08.918077' N	115° 10.411540' W
Water Development or Draft Site	1	47° 07.270591' N	115° 15.088463' W
Drop Point	106	47° 14.282091' N	115° 19.244262' W
Repeater	CMD 10 Flattop Mtn	47° 14.733954' N	115° 19.272263' W
Drop Point	110	47° 15.134225' N	115° 19.249021' W
Drop Point	112	47° 15.618209' N	115° 21.487338' W
Drop Point	113	47° 15.628198' N	115° 22.840469' W
Division Break	1	47° 14.757016' N	115° 23.579642' W
Incident Command Post	4	47° 11.210798' N	115° 29.282629' W
Helispot	3	47° 09.092148' N	115° 24.429684' W
Helispot	2	47° 13.479192' N	115° 18.253194' W
Helispot	12	47° 08.917272' N	115° 13.575525' W
Repeater	CMD 8 Conrad Lo	47° 09.117292' N	115° 27.908138' W
Repeater	CMD 9 Simmon Lo	47° 05.862392' N	115° 16.003746' W
Repeater	CMD 6	47° 14.545814' N	115° 27.698181' W



Stataline Complex
 ID-IPF-000504
 07/23/2021
MEDICAL TRANSPORT MAP

<ul style="list-style-type: none"> ● Helispot ✕ Division Break ✕ Branch Break ■ Incident Command Post ■ Drop Point ■ Camp □ Lookout 	<ul style="list-style-type: none"> ● Water Development or Draft Site ■ Landing or Log Deck ◆ Internet Access ◆ Repeater ◆ Hazard ■ Fire Edge — Contained Line 	<ul style="list-style-type: none"> ■ Wildfire Daily Fire Perimeter — Trail — National Designated Trail — Paved Road — Gravel Road — Dirt Roads — Unimproved Roads 	<ul style="list-style-type: none"> — Closed Roads — Primary Highway — Secondary Highway — Paved Roads — Dirt (Not Paved) — Trans_Roads_Census — Transportation Routes 	<ul style="list-style-type: none"> — Railroad Estimated Ground Evacuation Time (Fine) <ul style="list-style-type: none"> • 1 to 2 Hours • 2 to 4 Hours • 4 to 6 Hours • More than 6 Hours
--	--	--	--	--

0 1 2 4
Miles
0 1 2 4
Kilometers

2,262 acres
 NAD 1983 UTM Zone 11N
 Created 10/2021 11:14 PM by S. Smith

Southwest Area
 Incident Management Team 5