

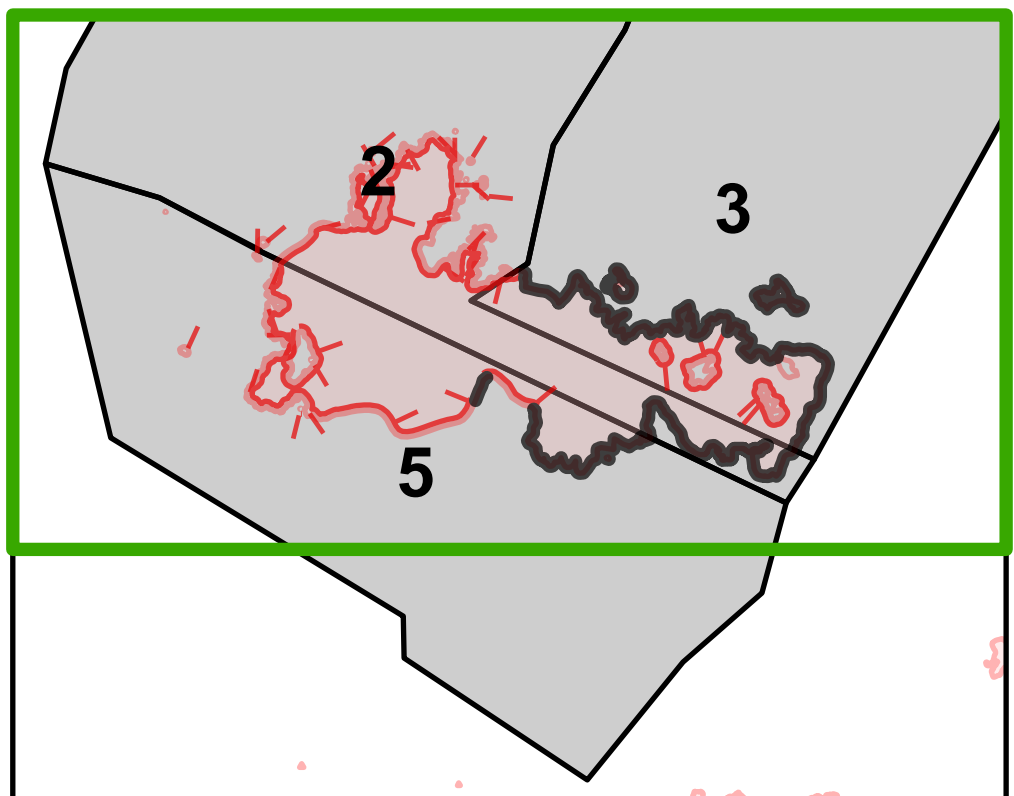
Suppression Repair Map - Zone 2

Stataline Complex
D-IPF-000504

09/06/2021

TUMBLEDOWN OPERATIONS

- Helispot
- Unimproved Landing Area
- Drop Point
- ⊠ Closure
- Staging Area
- ⌂ Lookout
- ⚠ Value at Risk
- Other
- ⚙ Gate
- ⚖ Bridge
- 🌳 Water Development or Draft Site
- 🏠 Landing or Log Deck
- 🚧 Dozer Push
- ⚡ Culvert
- ♻️ Repeater
- 💧 Water Source
- ⚡ Completed Dozer Line
- ⚡ Completed Fuel Break
- ⚡ Completed Hand Line
- ⚡ Completed Mixed Construction Line
- ⚡ Completed Plow Line
- ⚡ Completed Road as Line
- ⚡ Access or Improved Road
- ⚡ Repair Line
- ⚡ Road Repair
- ⚡ Trail
- ⚡ Forest Service Roads Closed
- ⚡ Administrative FS Boundary
- ⚡ Other Property
- ⚡ Pump
- ⚡ Water Tank
- ⚡ Wildfire Daily Fire Perimeter
- ⚡ Fire Zones
- ⚡ Repair Status Point
- ⚡ Completed - Inspected
- ⚡ In Use - Fire Management
- ⚡ Completed - Ready for Inspection
- ⚡ In Progress
- ⚡ Repair Needed
- ⚡ No Repair Needed
- ⚡ Other - See Comments
- ⚡ Unknown
- ⚡ Repair Status Line
- ⚡ Completed - Inspected
- ⚡ In Use - Fire Management
- ⚡ Completed - Ready for Inspection
- ⚡ In Progress
- ⚡ Repair Needed
- ⚡ No Repair Needed
- ⚡ Other - See Comments
- ⚡ Unknown



Incident Name	Source Statement	Acres	Acres Effective Date
Tumbledown- Stataline Complex	Acres from IR	10,682	8/25/2021 2000 PDT

