

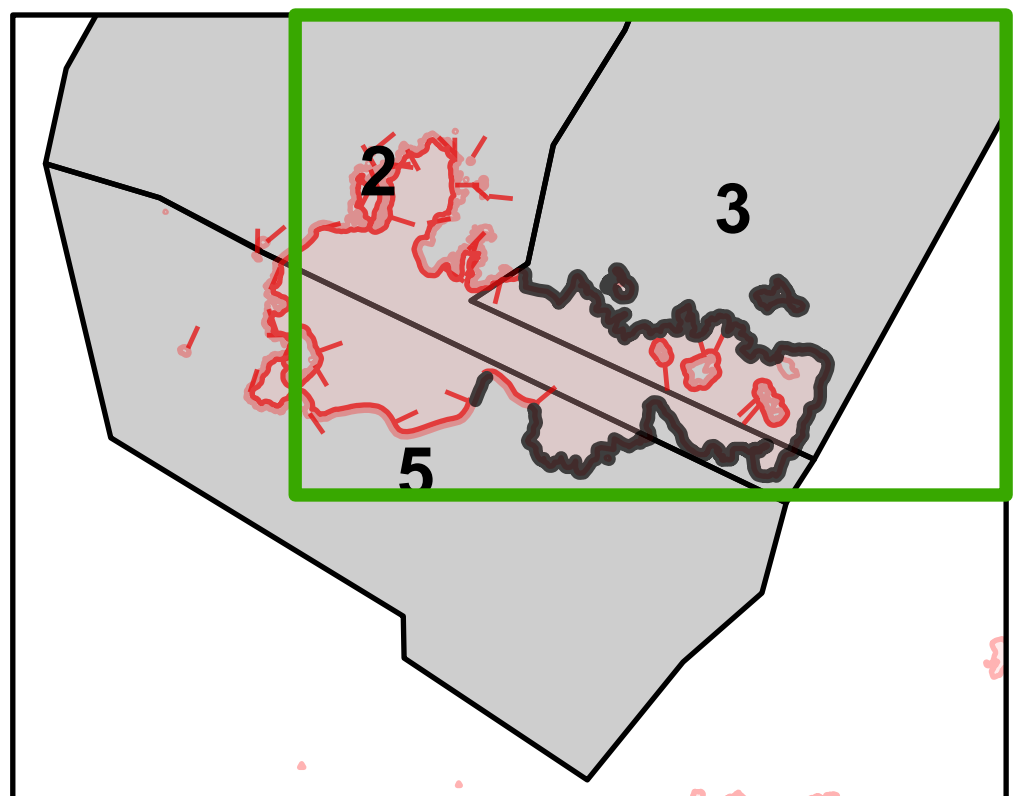
**Suppression Repair Map - Zone 3**

Stateline Complex  
D-IPF-000504

09/07/2021

**TUMBLEDOWN OPERATIONS**

- Helispot
- Unimproved Landing Area
- Drop Point
- ✕ Closure
- Staging Area
- ⌂ Lookout
- ⊕ Value at Risk
- Other
- ⊗ Gate
- ⌉ Bridge
- ⊗ Water Development or Draft Site
- ⊗ Landing or Log Deck
- ⊗ Dozer Push
- ⊗ Culvert
- ⊗ Internet Access
- ⊗ Repeater
- ⊗ Completed Dozer Line
- ⊗ Fire Zones
- ⊗ Completed Fuel Break
- ⊗ Completed Hand Line
- ⊗ Completed Mixed Construction Line
- ⊗ Completed Road as Line
- ⊗ Access or Improved Road
- ⊗ Repair Line
- ⊗ Trail
- ⊗ Forest Service Roads Closed
- ⊗ Administrative FS Boundary
- ⊗ Other Property
- ⊗ Pump
- ⊗ Water Tank
- ⊗ Wildfire Daily Fire Perimeter
- ⊗ Repair Status Point
- ⊗ Completed - Inspected
- ⊗ In Use - Fire Management
- ⊗ Completed - Ready for Inspection
- ⊗ In Progress
- ⊗ Repair Needed
- ⊗ No Repair Needed
- ⊗ Other - See Comments
- ⊗ Unknown
- ⊗ Repair Status Line
- ⊗ Completed - Inspected
- ⊗ In Use - Fire Management
- ⊗ Completed - Ready for Inspection
- ⊗ In Progress
- ⊗ Repair Needed
- ⊗ No Repair Needed
- ⊗ Other - See Comments
- ⊗ Unknown



Incident Name	Source Statement	Acres	Acres Effective Date
Tumbledown-Stateline Complex	Acres from IR	10,682	8/25/2021 2000 PDT

