

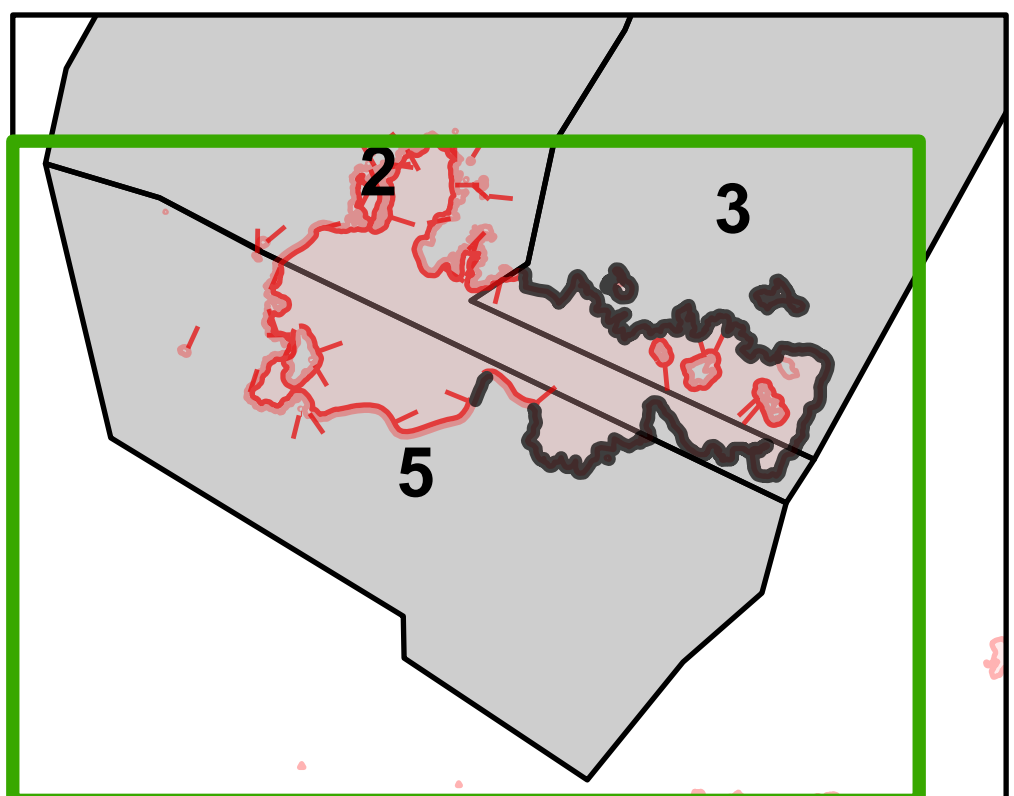
# Suppression Repair Map - Zone 5

Stateline Complex  
D-IPF-000504

09/07/2021

## TUMBLEDOWN OPERATIONS

- Helispot
- Unimproved Landing Area
- Drop Point
- ⊠ Closure
- Staging Area
- ⌂ Lookout
- ⊙ Value at Risk
- Other
- ⊙ Gate
- ⌈ Bridge
- ⊙ Water Development or Draft Site
- ⊙ Landing or Log Deck
- ⊙ Dozer Push
- ⊙ Culvert
- ⊙ Repeater
- ⊙ Water Source
- ⊙ Completed Dozer Line
- ⊙ Completed Fuel Break
- ⊙ Completed Hand Line
- ⊙ Completed Mixed Construction Line
- ⊙ Completed Road as Line
- ⊙ Access or Improved Road
- ⊙ Repair Line
- ⊙ Trail
- ⊙ Forest Service Roads Closed
- ⊙ Administrative FS Boundary
- ⊙ Other Property
- ⊙ Pump
- ⊙ Water Tank
- ⊙ Wildfire Daily Fire Perimeter
- ⊙ Fire Zones
- ⊙ Repair Status Point
- ⊙ Completed - Inspected
- ⊙ In Use - Fire Management
- ⊙ Completed - Ready for Inspection
- ⊙ In Progress
- ⊙ Repair Needed
- ⊙ No Repair Needed
- ⊙ Other - See Comments
- ⊙ Unknown
- ⊙ Repair Status Line
- ⊙ Completed - Inspected
- ⊙ In Use - Fire Management
- ⊙ Completed - Ready for Inspection
- ⊙ In Progress
- ⊙ Repair Needed
- ⊙ No Repair Needed
- ⊙ Other - See Comments
- ⊙ Unknown



Incident Name	Source Statement	Acres	Acres Effective Date
Tumbledown-Stateline Complex	Acres from IR	10,682	8/25/2021 2000 PDT

