

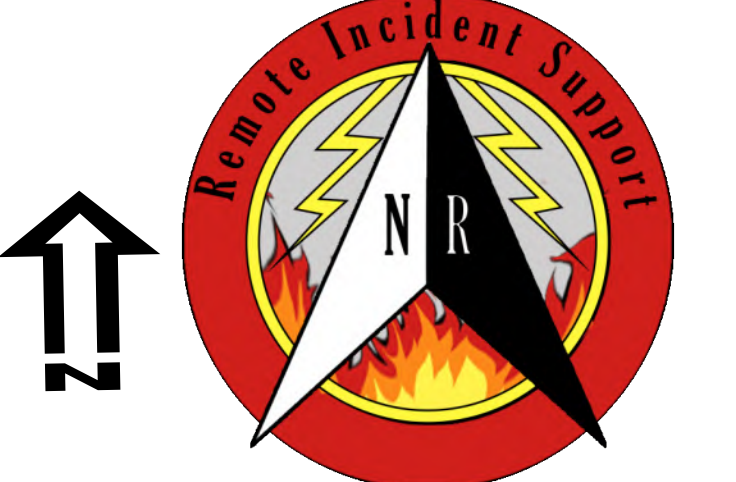
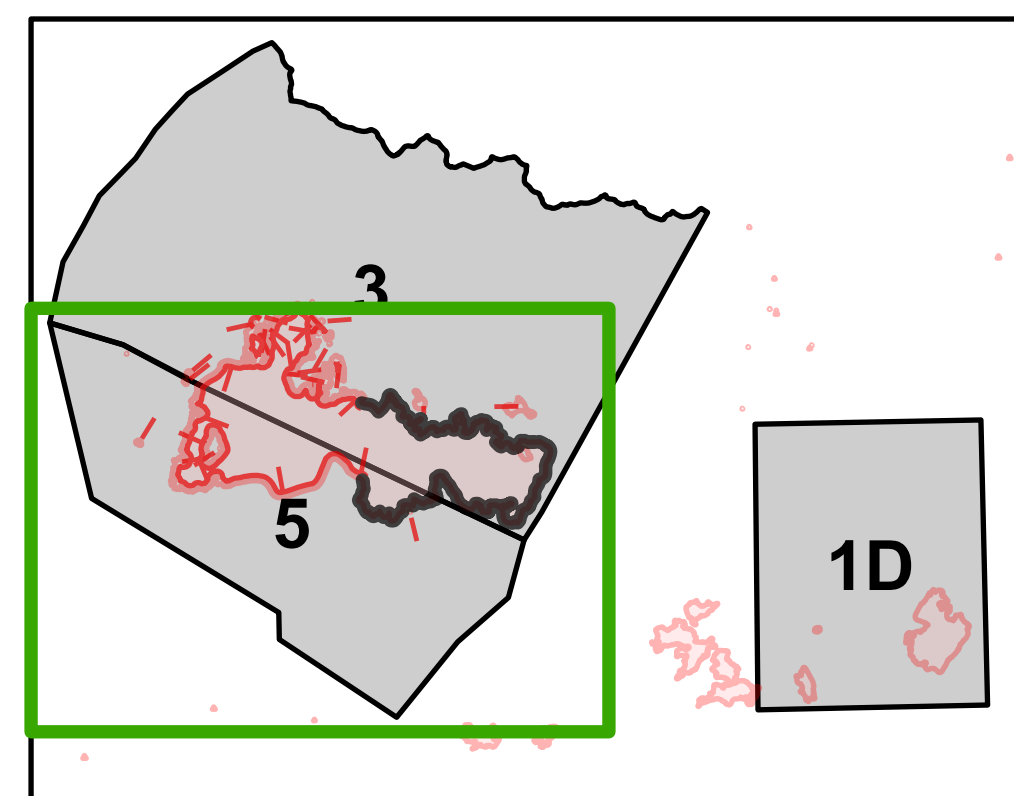
Suppression Repair Map - Zone 5

Stateline Complex
 D-IPF-000504
 9/19/2021

11,117 acres as of
 09/16/2021 2205 MDT

TUMBLEDOWN OPERATIONS

- | | | | | |
|---|---|--|--|---|
| <ul style="list-style-type: none"> ● Helispot ⓪ Unimproved Landing Area ■ Drop Point ⓧ Closure Ⓜ Staging Area Ⓜ Lookout Ⓜ Value at Risk Ⓜ Other Ⓜ Gate | <ul style="list-style-type: none"> Ⓜ Bridge Ⓜ Water Development or Draft Site Ⓜ Stream Crossing Ⓜ Road Repair Ⓜ Repair Point Ⓜ Landing or Log Deck Ⓜ Dozer Push Ⓜ Culvert Ⓜ Repeater | <ul style="list-style-type: none"> Ⓜ Water Source Ⓜ Other Property Ⓜ Pump Ⓜ Water Tank Ⓜ Completed Dozer Line Ⓜ Completed Fuel Break Ⓜ Completed Hand Line Ⓜ Completed Mixed Construction Line Ⓜ Completed Road as Line | <ul style="list-style-type: none"> — Access or Improved Road — Other — Repair Line — Road Repair — Fire Edge — Contained Line — Wildfire Daily Fire Perimeter — Fire Zones | <ul style="list-style-type: none"> ● Repair Status Point ● Completed - Inspected ● In Use - Fire Management ● Completed - Ready for Inspection ● In Progress ● Repair Needed ● No Repair Needed ● Other - See Comments ● Unknown |
|---|---|--|--|---|



0 1 2 Miles