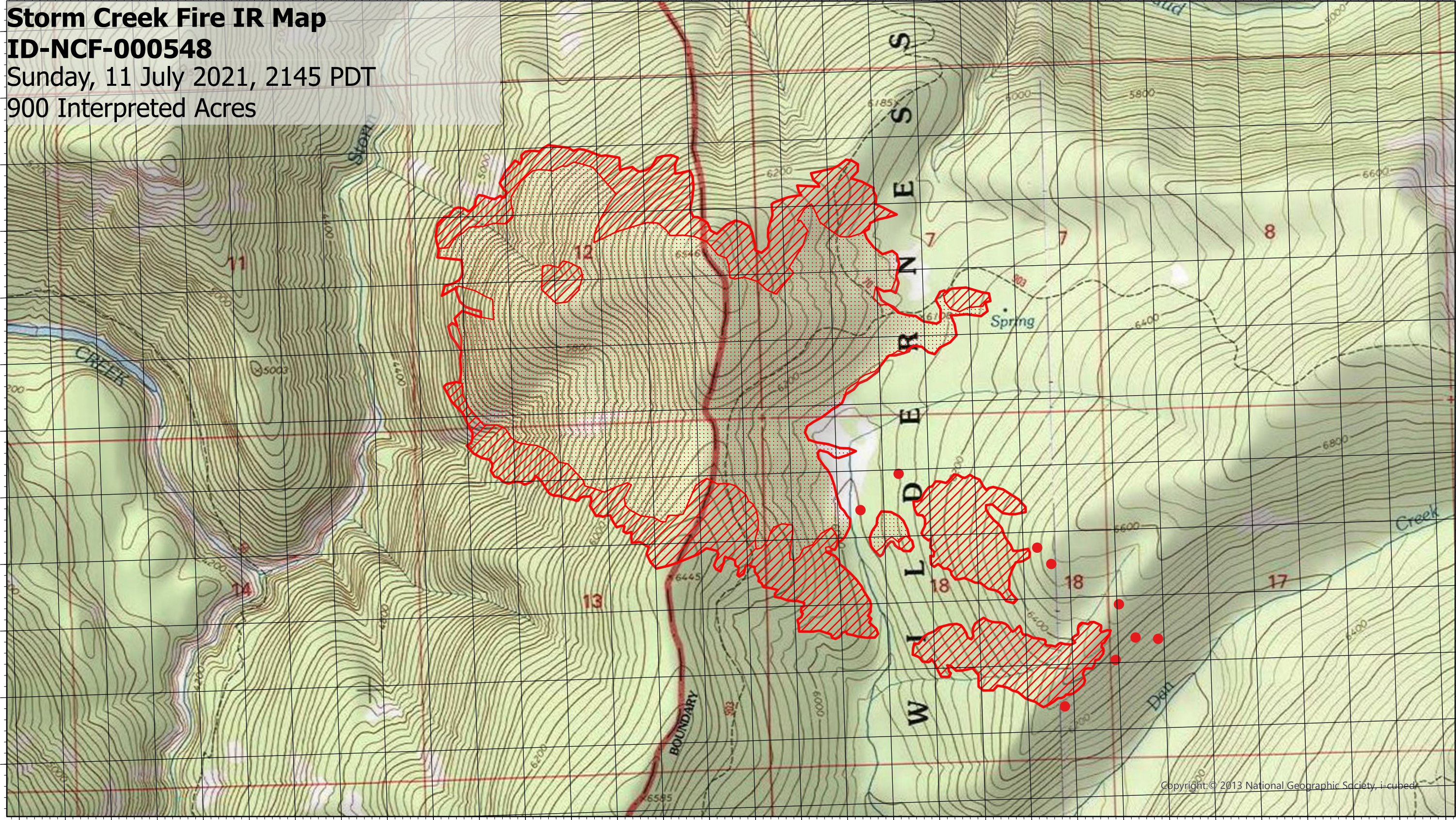


114°33'40"W 114°33'20"W 114°33'W 114°32'50"W 114°32'30"W 114°32'10"W 114°32'W 114°31'50"W 114°31'30"W 114°31'10"W 114°31'W 114°30'50"W 114°30'30"W 114°30'10"W 114°30'W 114°29'50"W 114°29'30"W 114°29'10"W 114°29'W 114°28'50"W

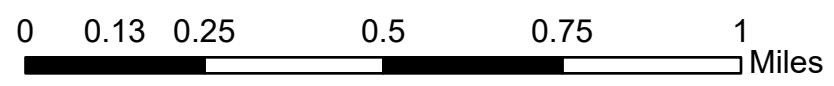
Storm Creek Fire IR Map
ID-NCF-000548
Sunday, 11 July 2021, 2145 PDT
900 Interpreted Acres



114°33'50"W 114°33'30"W 114°33'10"W 114°33'W 114°32'50"W 114°32'30"W 114°32'10"W 114°32'W 114°31'50"W 114°31'30"W 114°31'10"W 114°31'W 114°30'50"W 114°30'30"W 114°30'10"W 114°30'W 114°29'50"W 114°29'30"W 114°29'10"W 114°29'W 114°28'50"W

- Isolated Heat
- ▨ Scattered Heat
- ▧ Intense Heat
- ▭ Burn Perimeter

Scale: 1:17,000
Projection: WGS 1984
Produced by: Owyhee Air Research, LLC
IR Interpreter: S. Osberg
Contact: fire@owyheear.com (208) 442-5405



Copyright: © 2013 National Geographic Society, i-cubed