

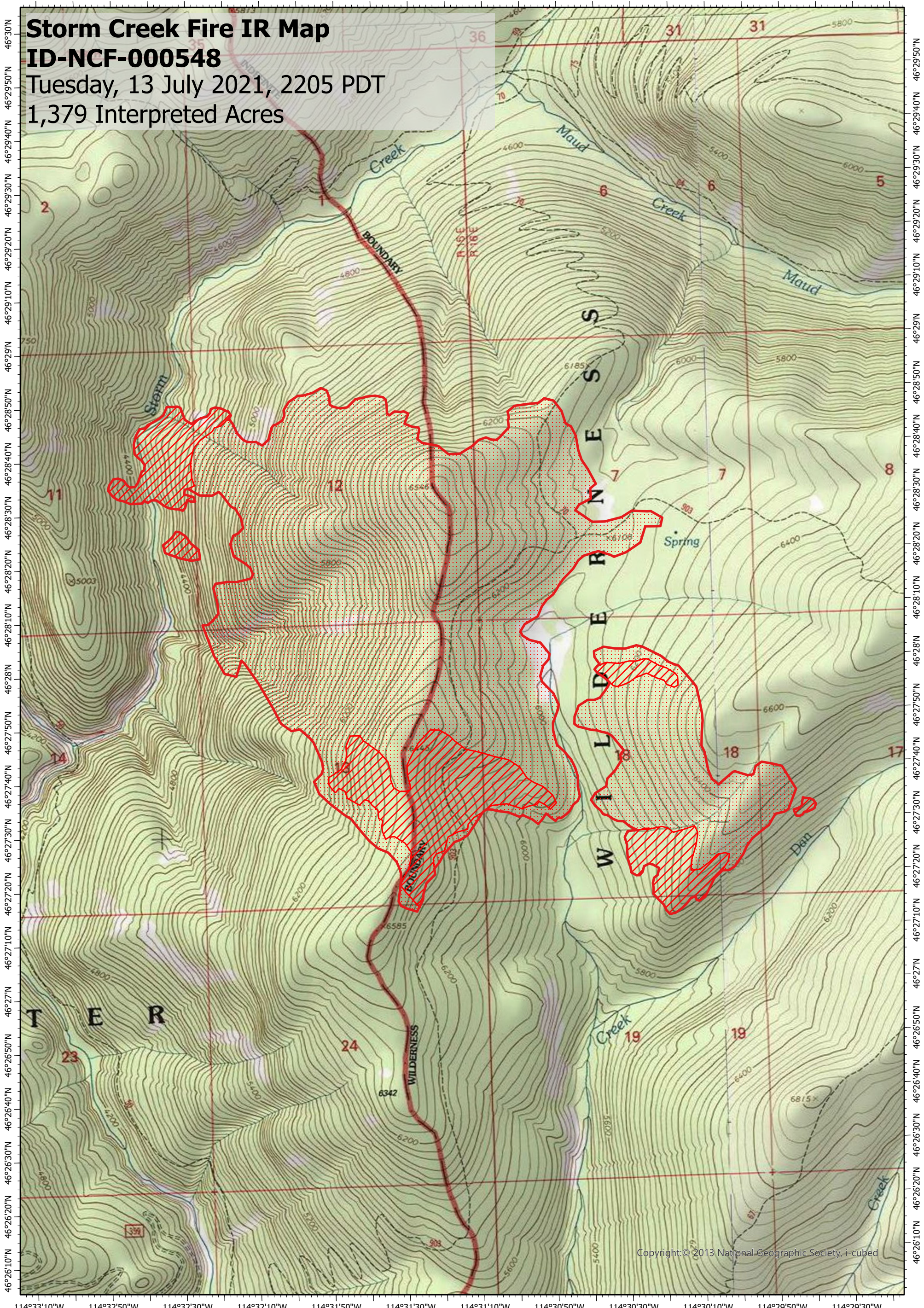
114°33'W 114°32'40"W 114°32'20"W 114°32'W 114°31'40"W 114°31'20"W 114°31'W 114°30'40"W 114°30'20"W 114°30'W 114°29'40"W 114°29'20"W

Storm Creek Fire IR Map

ID-NCF-000548

Tuesday, 13 July 2021, 2205 PDT




1,379 Interpreted Acres



Copyright: © 2013 National Geographic Society, i-cubed

114°33'10"W 114°32'50"W 114°32'30"W 114°32'10"W 114°31'50"W 114°31'30"W 114°31'10"W 114°30'50"W 114°30'30"W 114°30'10"W 114°29'50"W 114°29'30"W

Legend

-  Burn Perimeter
-  Scattered Heat
-  Intense Heat

Scale: 1:20,000
 Projection: North American 1983
 Produced by: Owyhee Air Research, LLC
 IR Interpreter: S. Osberg
 Contact: fire@owyheeair.com (208) 442-5405

