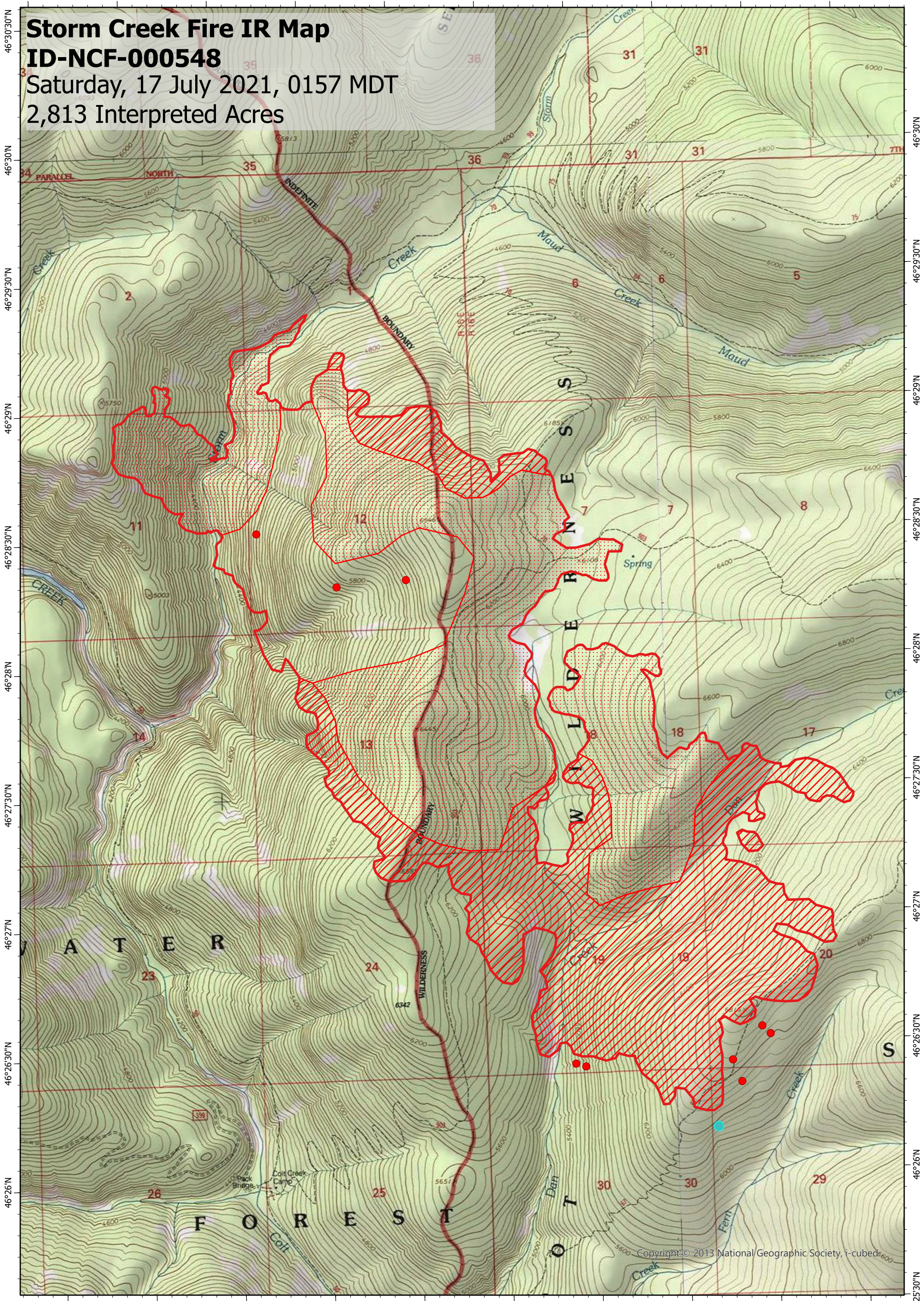


114°33'30"W 114°33'W 114°32'30"W 114°32'W 114°31'30"W 114°31'W 114°30'30"W 114°30'W 114°29'30"W 114°29'W



**Storm Creek Fire IR Map**  
**ID-NCF-000548**  
Saturday, 17 July 2021, 0157 MDT  
2,813 Interpreted Acres

114°33'30"W 114°33'W 114°32'30"W 114°32'W 114°31'30"W 114°31'W 114°30'30"W 114°30'W 114°29'30"W 114°29'W 46°25'30"N

**Legend**

- Isolated Heat
- Burn Perimeter
- Intense Heat
- Scattered Heat

Scale: 1:25,000  
 Projection: North American 1983  
 Produced by: Owyhee Air Research, LLC  
 IR Interpreter: C. Holley  
 Contact: [fire@owyheear.com](mailto:fire@owyheear.com) (208) 442-5405

