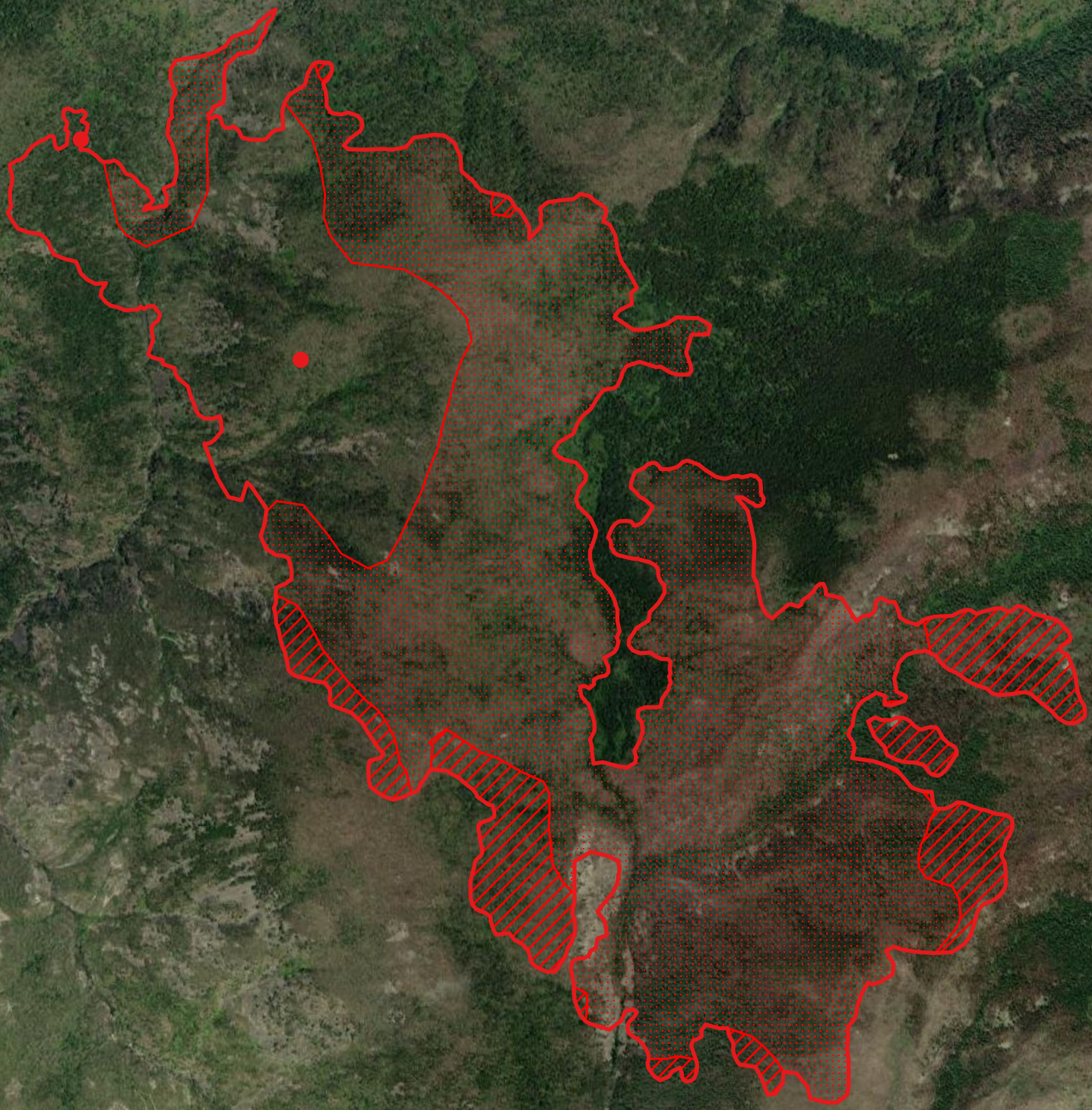


114°34'W 114°33'30"W 114°33'W 114°32'30"W 114°32'W 114°31'30"W 114°31'W 114°30'30"W 114°30'W 114°29'30"W 114°29'W 114°28'30"W

46°31'N  
46°30'30"N  
46°30'N  
46°29'30"N  
46°29'N  
46°28'30"N  
46°28'N  
46°27'30"N  
46°27'N  
46°26'30"N  
46°26'N  
46°25'30"N  
46°25'N

46°30'30"N  
46°30'N  
46°29'30"N  
46°29'N  
46°28'30"N  
46°28'N  
46°27'30"N  
46°27'N  
46°26'30"N  
46°26'N  
46°25'30"N  
46°25'N

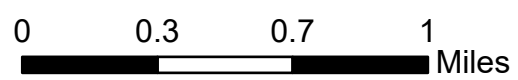
**Storm Creek Fire IR Map**  
**ID-NCF-000548**  
Saturday, 17 July 2021, 2145 PDT  
2,986 Interpreted Acres



**Legend**

- IR Isolated Heat
- Burn Perimeter
- ▨ IR Intense Heat
- ▩ IR Scattered Heat

Scale: 1:30,000  
Projection: North American 1983  
Produced by: Owyhee Air Research, LLC  
IR Interpreter: C. Merriman  
Contact: fire@owyheear.com (208) 442-5405



Maxar