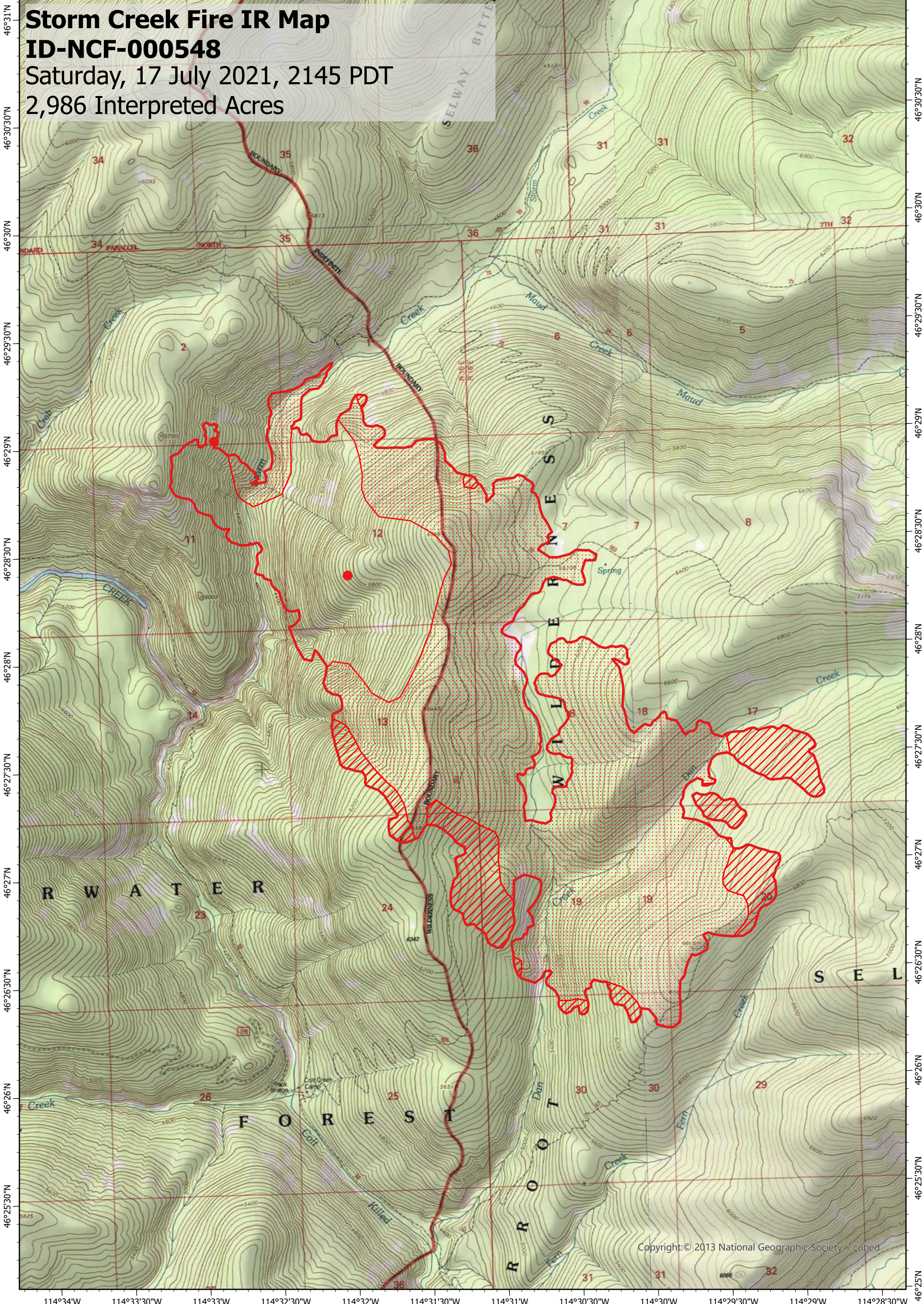


114°34'W 114°33'30"W 114°33'W 114°32'30"W 114°32'W 114°31'30"W 114°31'W 114°30'30"W 114°30'W 114°29'30"W 114°29'W 114°28'30"W

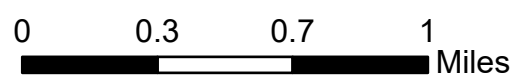


Storm Creek Fire IR Map
ID-NCF-000548
 Saturday, 17 July 2021, 2145 PDT
 2,986 Interpreted Acres

Legend

- IR Isolated Heat
- Burn Perimeter
- IR Intense Heat
- IR Scattered Heat

Scale: 1:30,000
 Projection: North American 1983
 Produced by: Owyhee Air Research, LLC
 IR Interpreter: C. Merriman
 Contact: fire@owyheear.com (208) 442-5405



Copyright: © 2013 National Geographic Society, 1-cubed

