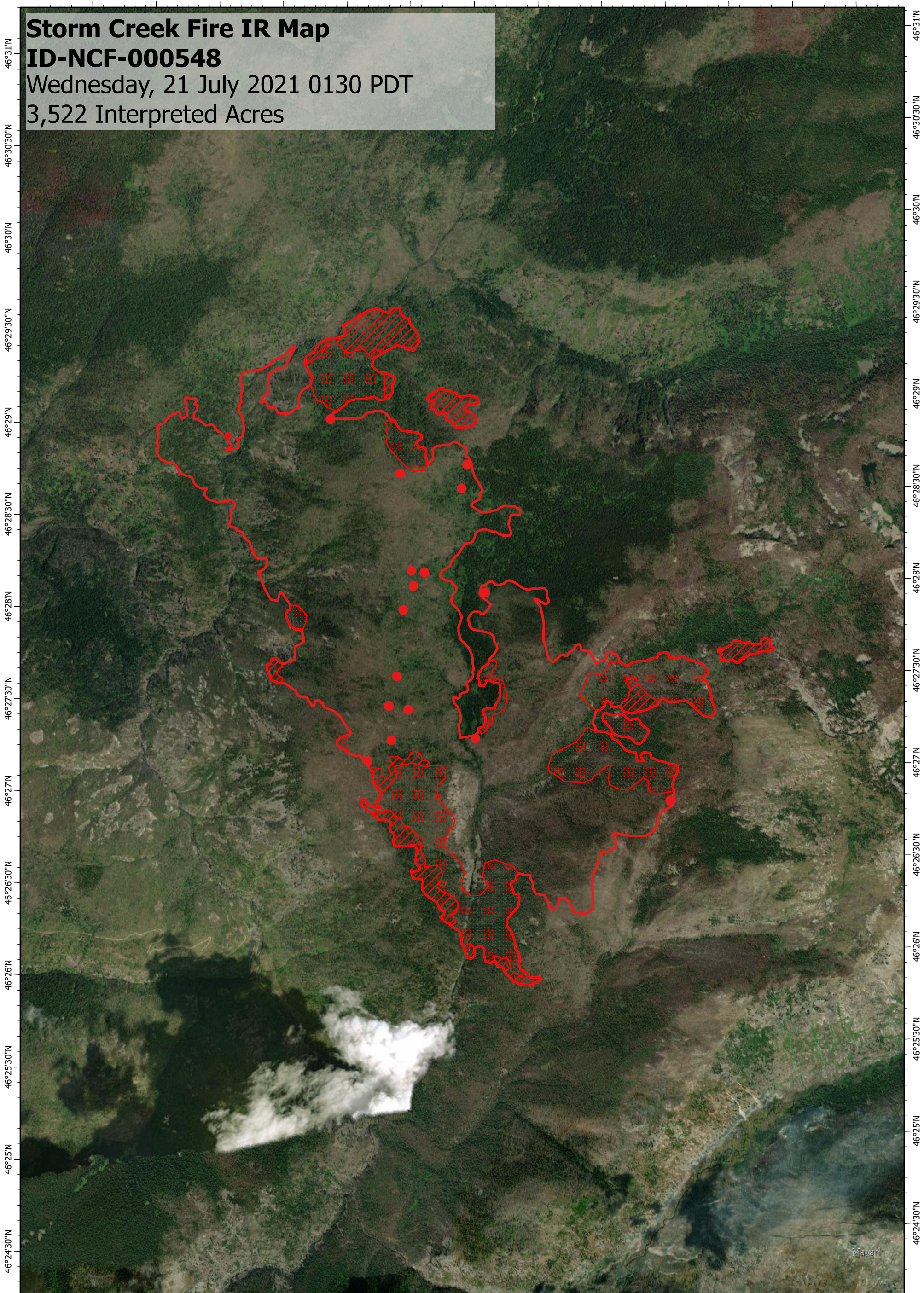


114°34'W 114°33'30"W 114°33'W 114°32'30"W 114°32'W 114°31'30"W 114°31'W 114°30'30"W 114°30'W 114°29'30"W 114°29'W 114°28'30"W 114°28'W 114°27'30"W

Storm Creek Fire IR Map
ID-NCF-000548
Wednesday, 21 July 2021 0130 PDT
3,522 Interpreted Acres

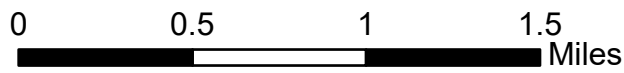


114°34'W 114°33'30"W 114°33'W 114°32'30"W 114°32'W 114°31'30"W 114°31'W 114°30'30"W 114°30'W 114°29'30"W 114°29'W 114°28'30"W 114°28'W 114°27'30"W

Legend

- Isolated Heat
- Scattered Heat
- Intense Heat
- Burn Perimeter

Scale: 1:35,000
 Projection: North American 1983
 Produced by: Owyhee Air Research, LLC
 IR Interpreter: E. Trout
 Contact: fire@owyheear.com (208) 442-5405



Maxar