

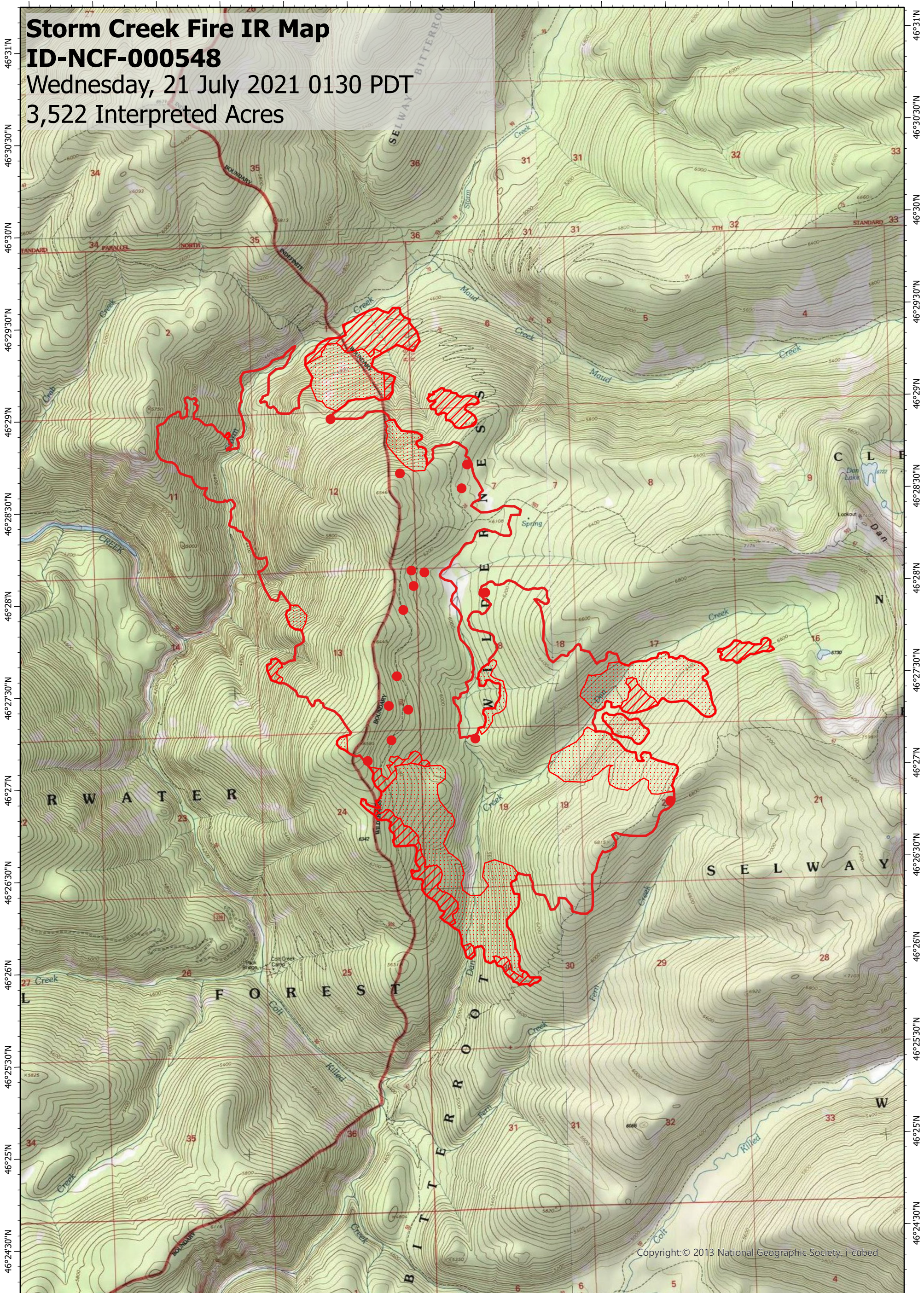
114°34'W 114°33'30"W 114°33'W 114°32'30"W 114°32'W 114°31'30"W 114°31'W 114°30'30"W 114°30'W 114°29'30"W 114°29'W 114°28'30"W 114°28'W 114°27'30"W

Storm Creek Fire IR Map

ID-NCF-000548

Wednesday, 21 July 2021 0130 PDT

3,522 Interpreted Acres



Copyright: © 2013 National Geographic Society, i-cubed

Legend

- Isolated Heat
- Scattered Heat
- Intense Heat
- Burn Perimeter

Scale: 1:35,000

Projection: North American 1983

Produced by: Owyhee Air Research, LLC

IR Interpreter: E. Trout

Contact: fire@owyheear.com (208) 442-5405

