

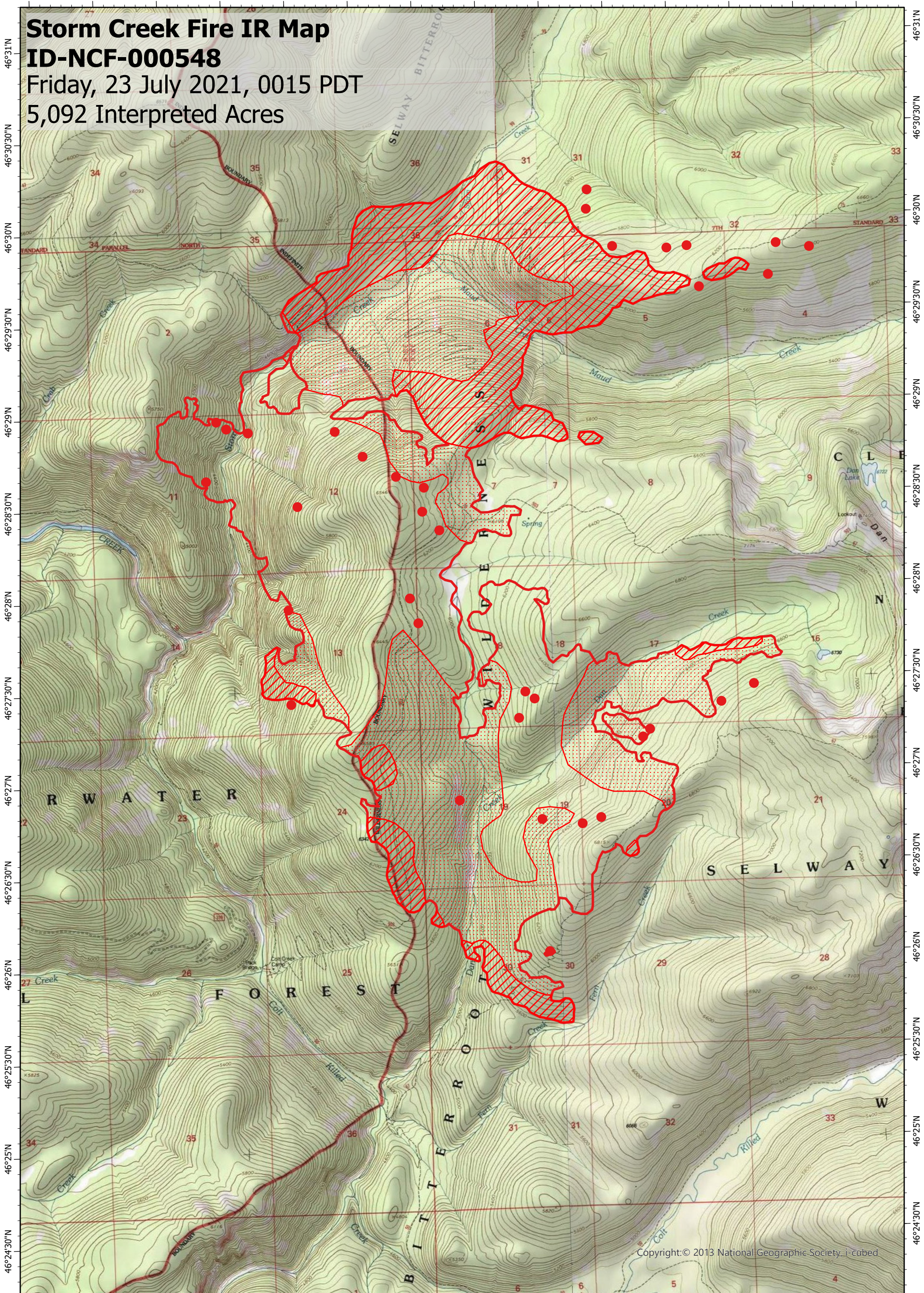
114°34'W 114°33'30"W 114°33'W 114°32'30"W 114°32'W 114°31'30"W 114°31'W 114°30'30"W 114°30'W 114°29'30"W 114°29'W 114°28'30"W 114°28'W 114°27'30"W

Storm Creek Fire IR Map

ID-NCF-000548

Friday, 23 July 2021, 0015 PDT

5,092 Interpreted Acres

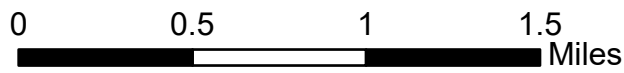


Copyright: © 2013 National Geographic Society, i-cubed

Legend

- IR Isolated Heat
- ▨ IR Intense Heat
- ▭ Burn Perimeter
- ▤ IR Scattered Heat

Scale: 1:35,000
 Projection: North American 1983
 Produced by: Owyhee Air Research, LLC
 IR Interpreter: C. Merriman
 Contact: fire@owyheear.com (208) 442-5405



114°34'W 114°33'30"W 114°33'W 114°32'30"W 114°32'W 114°31'30"W 114°31'W 114°30'30"W 114°30'W 114°29'30"W 114°29'W 114°28'30"W 114°28'W 114°27'30"W