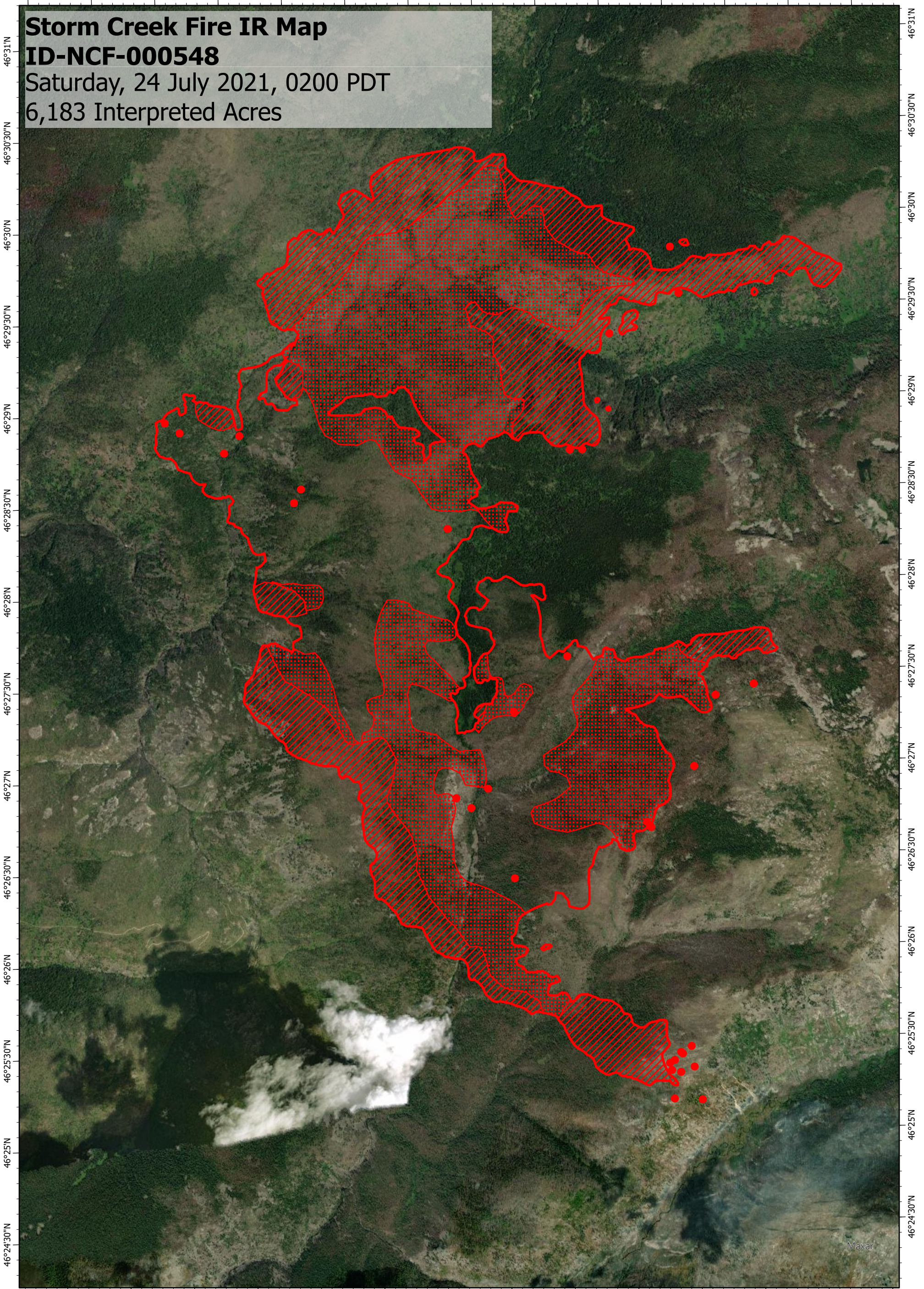


114°34'W 114°33'30"W 114°33'W 114°32'30"W 114°32'W 114°31'30"W 114°31'W 114°30'30"W 114°30'W 114°29'30"W 114°29'W 114°28'30"W 114°28'W 114°27'30"W

**Storm Creek Fire IR Map**  
**ID-NCF-000548**  
Saturday, 24 July 2021, 0200 PDT  
6,183 Interpreted Acres



**Legend**

- IR Isolated Heat
- ▨ IR Intense Heat
- ▤ IR Scattered Heat
- ▭ Burn Perimeter

Scale: 1:35,000  
 Projection: North American 1983  
 Produced by: Owyhee Air Research, LLC  
 IR Interpreter: C. Merriman  
 Contact: fire@owyheear.com (208) 442-5405

