

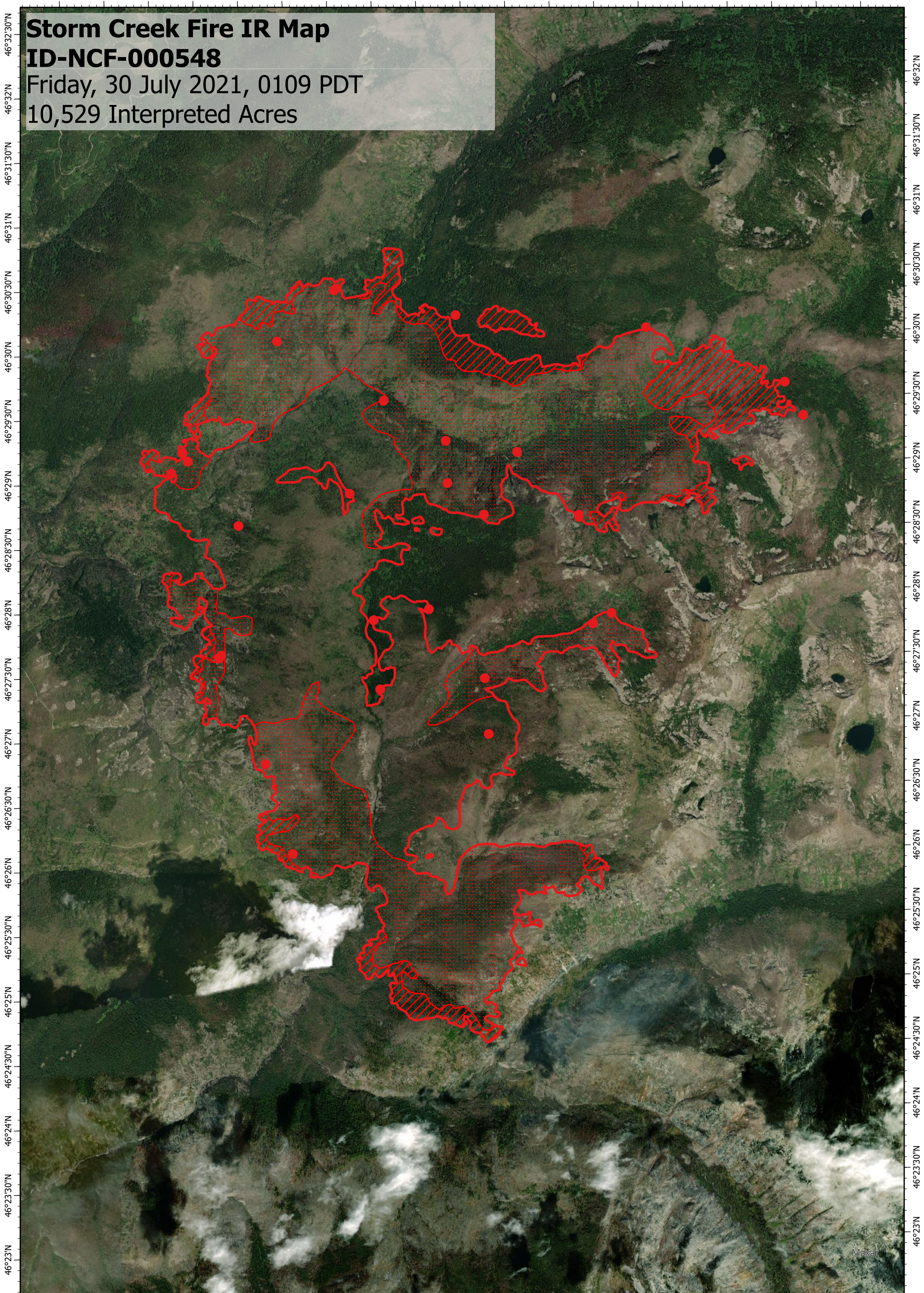
114°34'W 114°33'30"W 114°33'W 114°32'30"W 114°32'W 114°31'30"W 114°31'W 114°30'30"W 114°30'W 114°29'30"W 114°29'W 114°28'30"W 114°28'W 114°27'30"W 114°27'W 114°26'30"W 114°26'W 114°25'30"W 114°25'W

# Storm Creek Fire IR Map

## ID-NCF-000548

Friday, 30 July 2021, 0109 PDT

10,529 Interpreted Acres



### Legend

- Isolated Heat
- Burn Perimeter
- Intense Heat
- Scattered Heat

Scale: 1:50,000

Projection: North American 1983

Produced by: Owyhee Air Research, LLC

IR Interpreter: D. Merriman

Contact: [fire@owyheear.com](mailto:fire@owyheear.com) (208) 442-5405

