

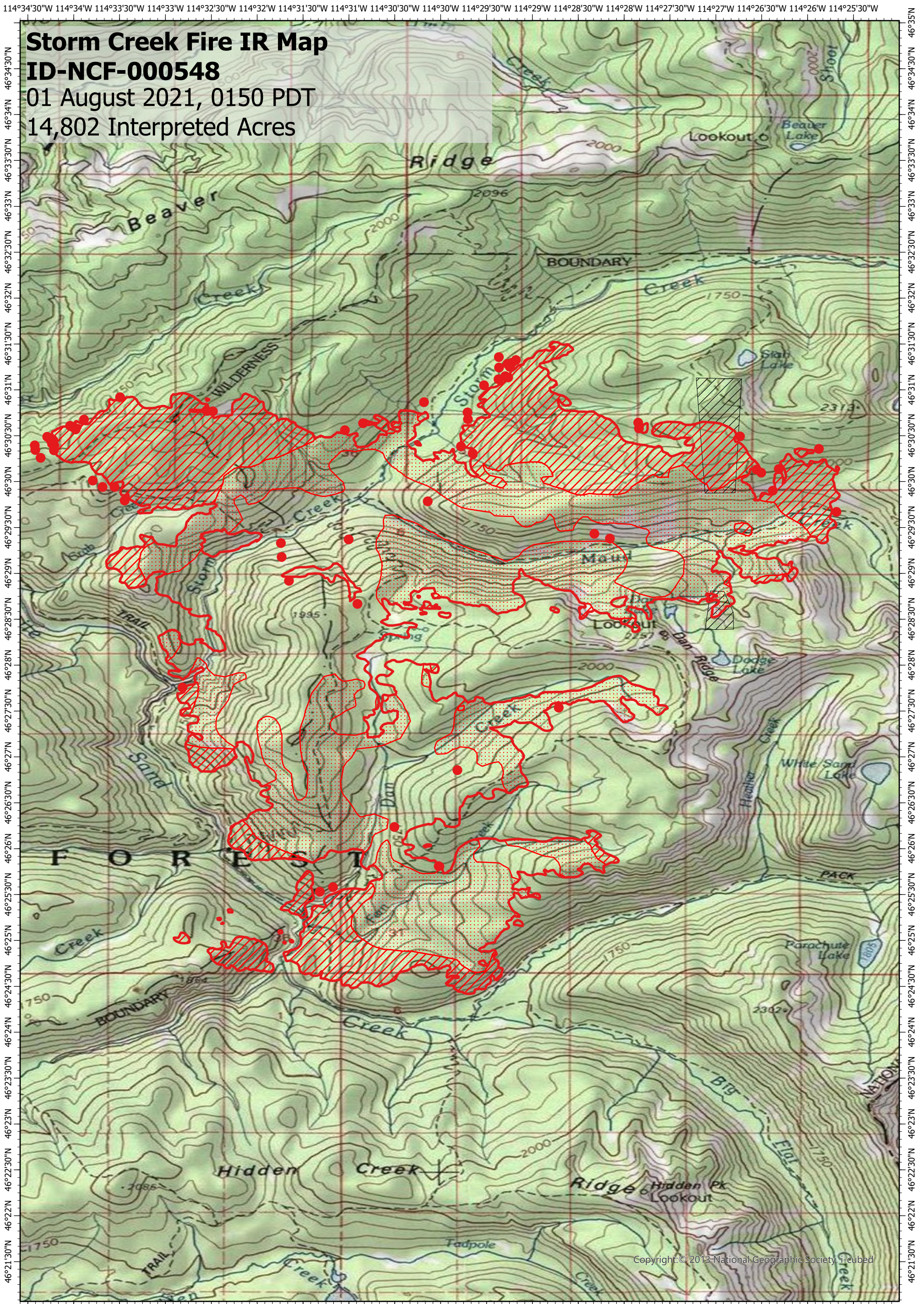
114°34'30"W 114°34'W 114°33'30"W 114°33'W 114°32'30"W 114°32'W 114°31'30"W 114°31'W 114°30'30"W 114°30'W 114°29'30"W 114°29'W 114°28'30"W 114°28'W 114°27'30"W 114°27'W 114°26'30"W 114°26'W 114°25'30"W

# Storm Creek Fire IR Map

## ID-NCF-000548

01 August 2021, 0150 PDT

14,802 Interpreted Acres



114°34'30"W 114°34'W 114°33'30"W 114°33'W 114°32'30"W 114°32'W 114°31'30"W 114°31'W 114°30'30"W 114°30'W 114°29'30"W 114°29'W 114°28'30"W 114°28'W 114°27'30"W 114°27'W 114°26'30"W 114°26'W 114°25'30"W

### Legend

- Isolated Heat
- Burn Perimeter
- Intense Heat
- Scattered Heat
- No Data

Scale: 1:70,000  
 Projection: WGS 1984  
 Produced by: Owyhee Air Research, LLC  
 IR Interpreter: C. Merriman  
 Contact: [fire@owyheear.com](mailto:fire@owyheear.com) (208) 442-5405



Copyright: © 2013 National Geographic Society, Inc.