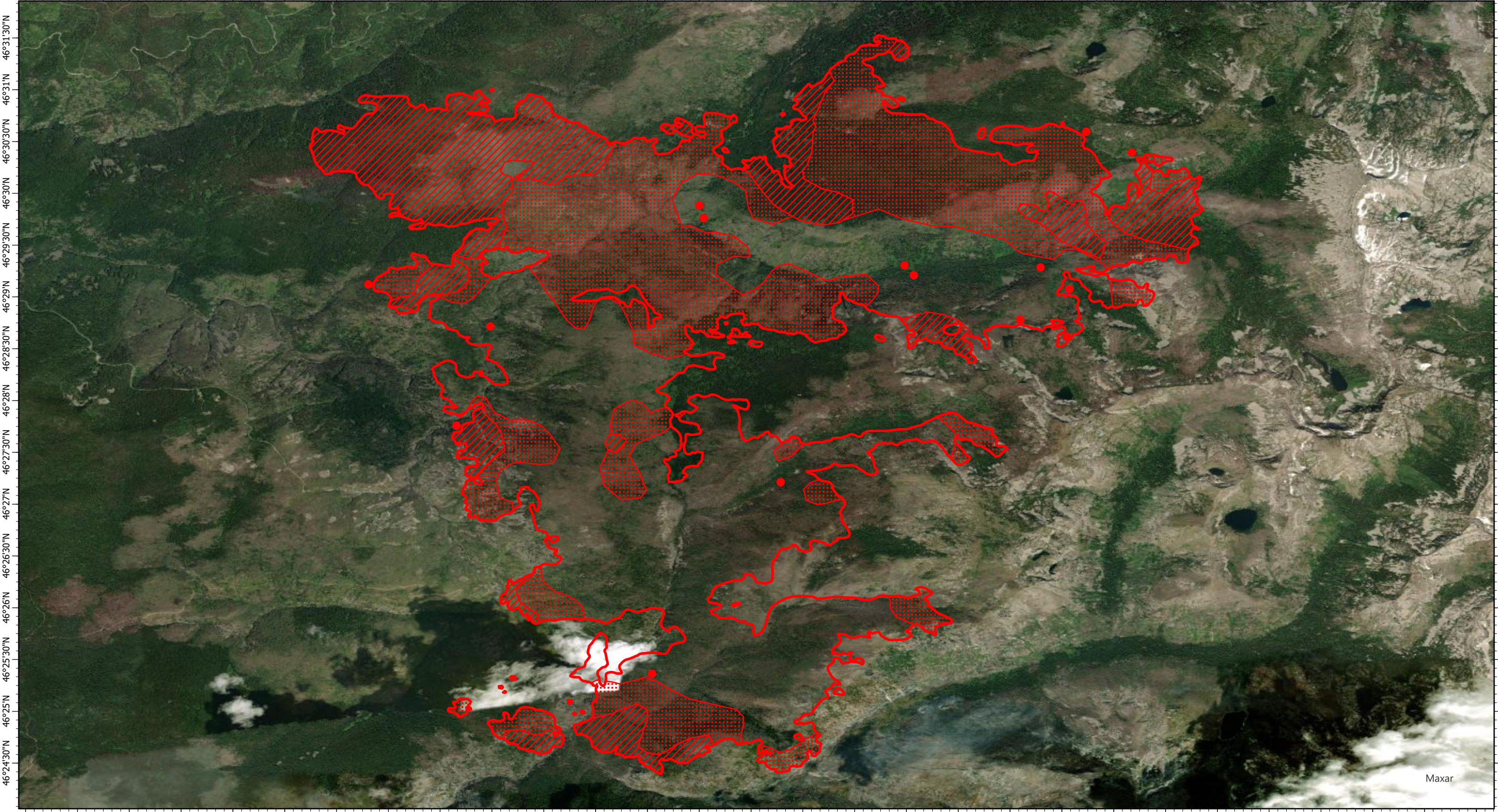


114°37'W 114°36'30"W 114°36'W 114°35'30"W 114°35'W 114°34'30"W 114°34'W 114°33'30"W 114°33'W 114°32'30"W 114°32'W 114°31'30"W 114°31'W 114°30'30"W 114°30'W 114°29'30"W 114°29'W 114°28'30"W 114°28'W 114°27'30"W 114°27'W 114°26'30"W 114°26'W 114°25'30"W 114°25'W 114°24'30"W 114°24'W 114°23'30"W 114°23'W



114°37'W 114°36'30"W 114°36'W 114°35'30"W 114°35'W 114°34'30"W 114°34'W 114°33'30"W 114°33'W 114°32'30"W 114°32'W 114°31'30"W 114°31'W 114°30'30"W 114°30'W 114°29'30"W 114°29'W 114°28'30"W 114°28'W 114°27'30"W 114°27'W 114°26'30"W 114°26'W 114°25'30"W 114°25'W 114°24'30"W 114°24'W 114°23'30"W 114°23'W

Storm Creek Fire IR Map
ID-NCF-000548
Sunday, 02 August 2021, 0300 MDT
14,940 Interpreted Acres

Scale: 1:65,000
Projection: WGS 1984
Produced by: Owyhee Air Research, LLC
IR Interpreter: C. Holley
Contact: fire@owyheeair.com (208) 442-5405

Legend

Burn Perimeter	Intense Heat
Isolated Heat	Scattered Heat

