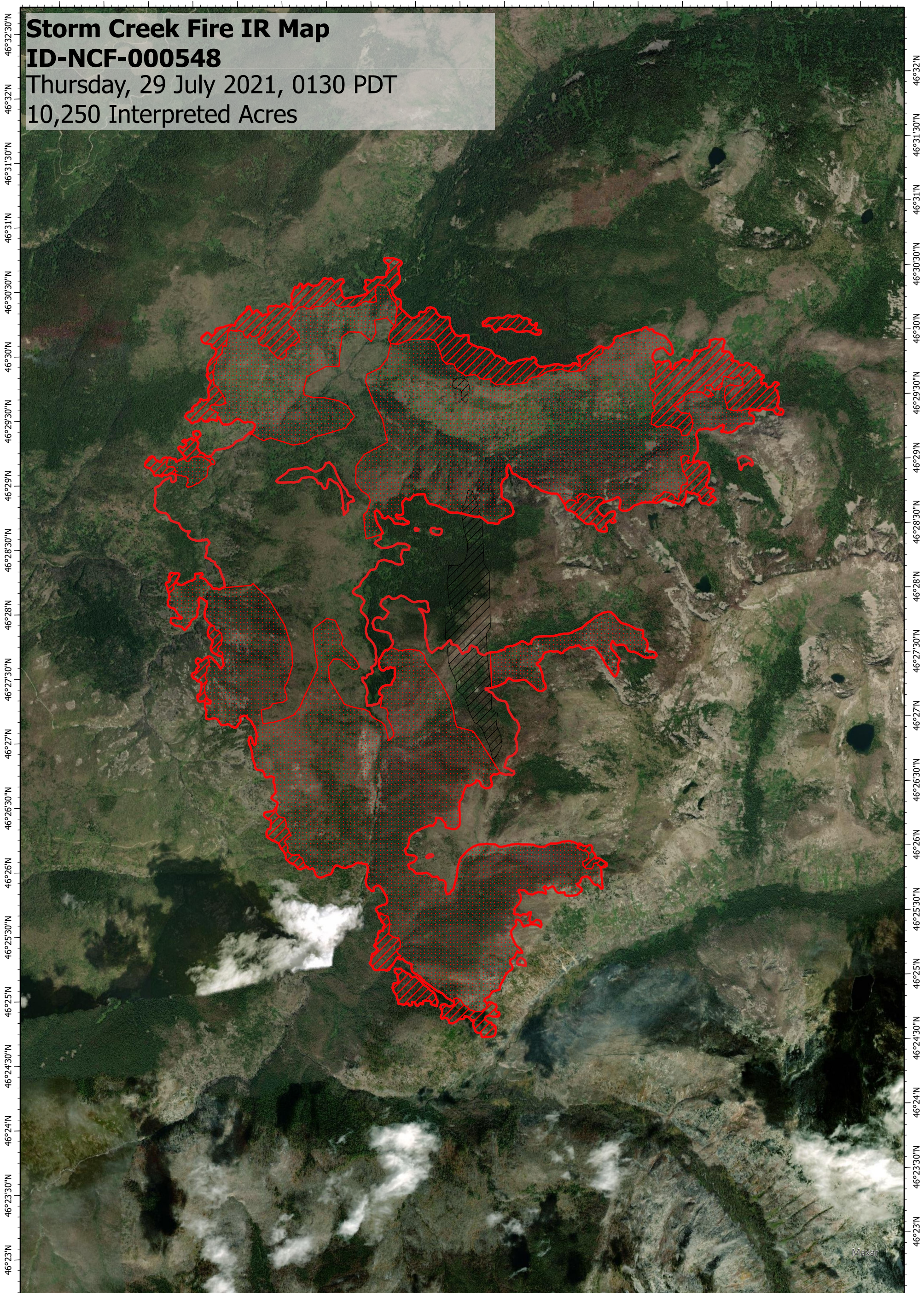






114°34'W 114°33'30"W 114°33'W 114°32'30"W 114°32'W 114°31'30"W 114°31'W 114°30'30"W 114°30'W 114°29'30"W 114°29'W 114°28'30"W 114°28'W 114°27'30"W 114°27'W 114°26'30"W 114°26'W 114°25'30"W 114°25'W

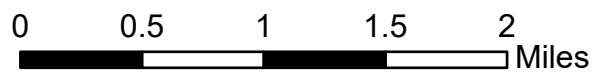
**Storm Creek Fire IR Map**  
**ID-NCF-000548**  
Thursday, 29 July 2021, 0130 PDT  
10,250 Interpreted Acres



**Legend**

-  Scattered Heat
-  Intense Heat
-  Burn Perimeter
-  Missing Imagery

Scale: 1:50,000  
 Projection: North American 1983  
 Produced by: Owyhee Air Research, LLC  
 IR Interpreter: E. Trout  
 Contact: fire@owyheear.com (208) 442-5405



114°34'W 114°34'W 114°33'30"W 114°33'30"W 114°33'W 114°32'30"W 114°32'W 114°31'30"W 114°31'W 114°30'30"W 114°30'W 114°29'30"W 114°29'W 114°28'30"W 114°28'W 114°27'30"W 114°27'W 114°26'30"W 114°26'W 114°25'30"W 114°25'W