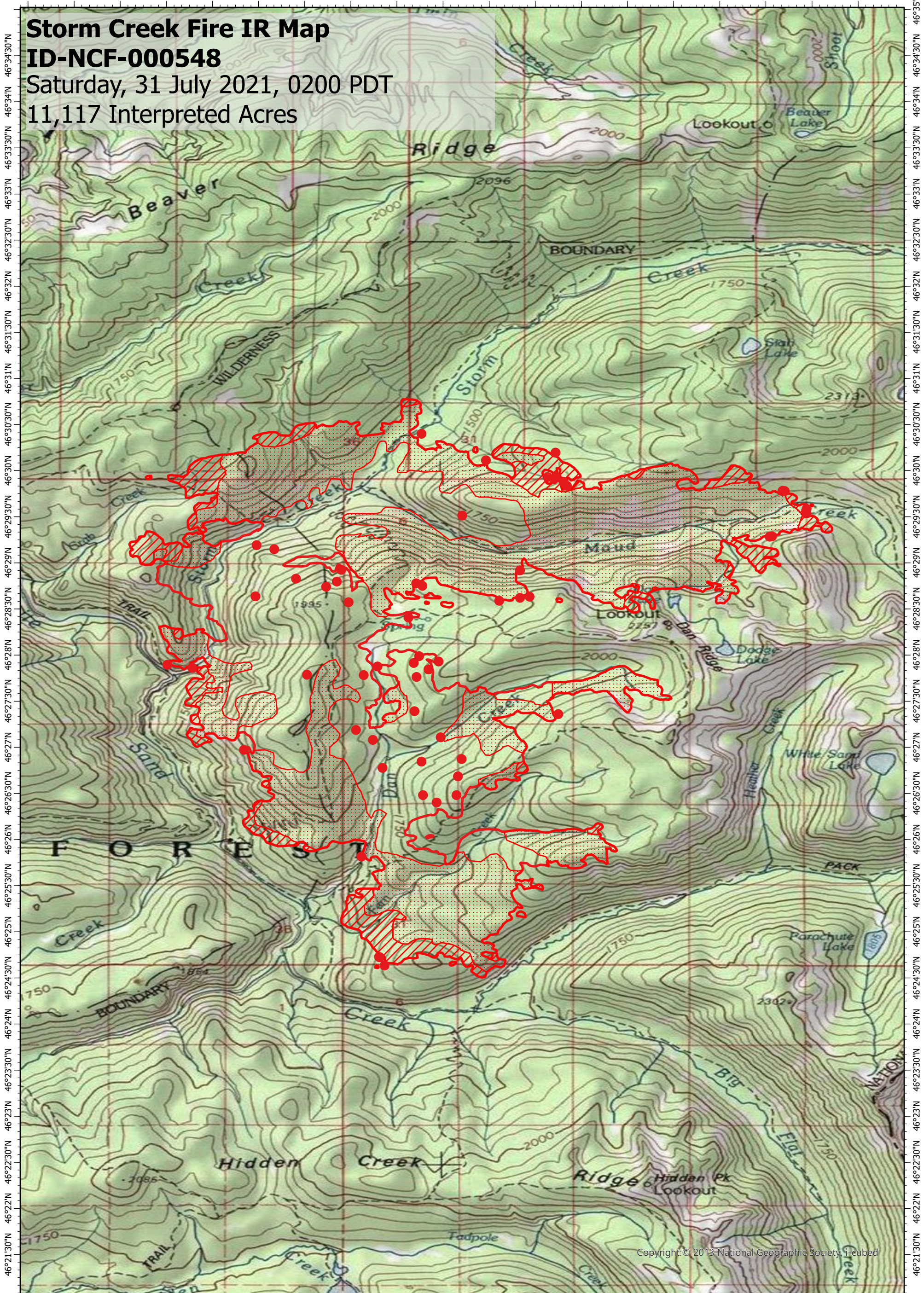


114°34'30"W 114°34'W 114°33'30"W 114°33'W 114°32'30"W 114°32'W 114°31'30"W 114°31'W 114°30'30"W 114°30'W 114°29'30"W 114°29'W 114°28'30"W 114°28'W 114°27'30"W 114°27'W 114°26'30"W 114°26'W 114°25'30"W

Storm Creek Fire IR Map

ID-NCF-000548

Saturday, 31 July 2021, 0200 PDT
11,117 Interpreted Acres



Copyright: © 2013 National Geographic Society, I-cubed

114°34'30"W 114°34'W 114°33'30"W 114°33'W 114°32'30"W 114°32'W 114°31'30"W 114°31'W 114°30'30"W 114°30'W 114°29'30"W 114°29'W 114°28'30"W 114°28'W 114°27'30"W 114°27'W 114°26'30"W 114°26'W 114°25'30"W

Legend

- Isolated Heat
- Intense Heat
- Scattered Heat
- Burn Perimeter

Scale: 1:70,000
 Projection: WGS 1984
 Produced by: Owyhee Air Research, LLC
 IR Interpreter: C. Merriman
 Contact: fire@owyheear.com (208) 442-5405

