

115°33'W 115°32'W 115°31'W 115°30'W 115°29'W 115°28'W 115°27'W 115°26'W 115°25'W 115°24'W 115°23'W 115°22'W 115°21'W 115°20'W

# Storm Theatre Complex Fire IR Map

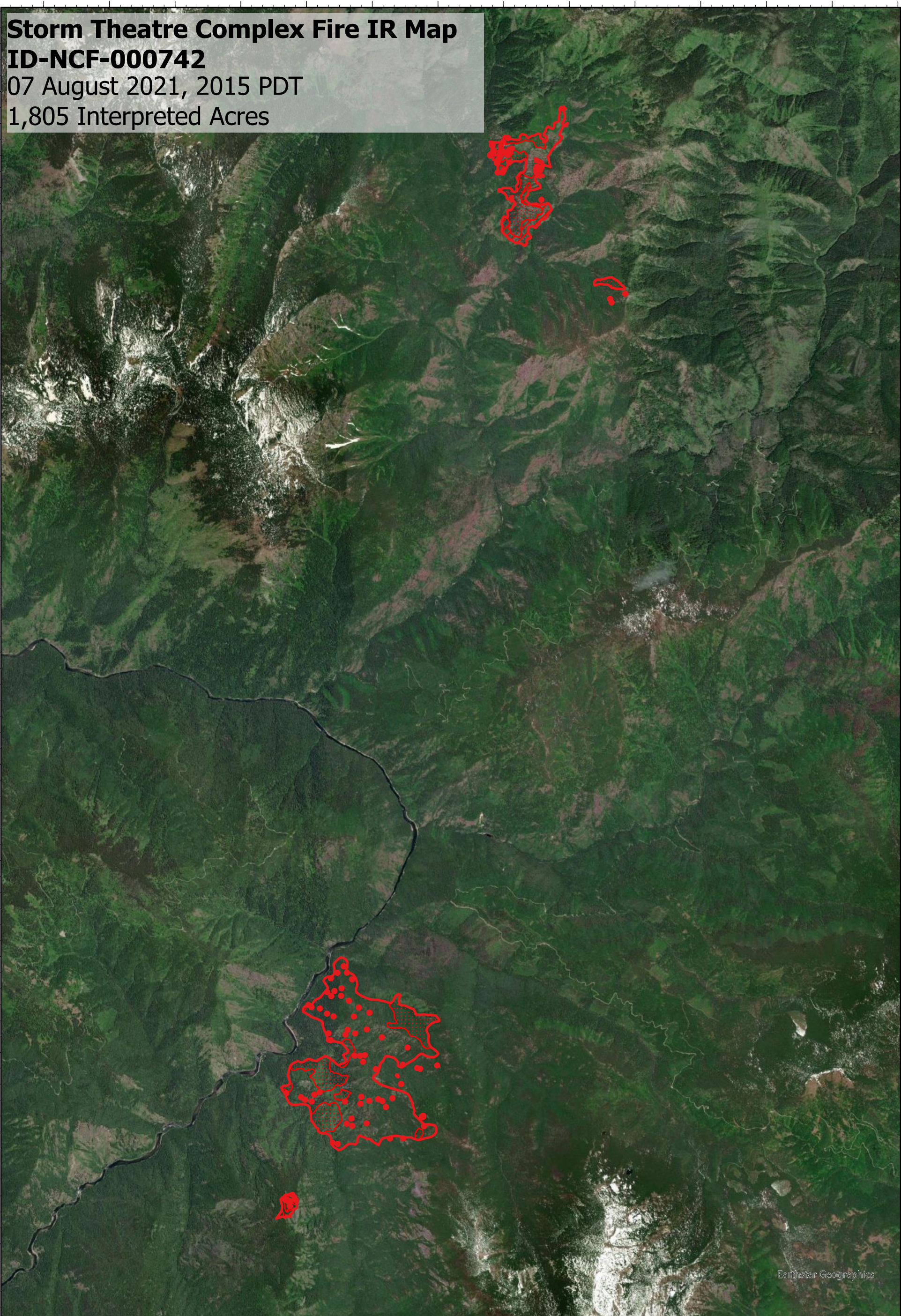
## ID-NCF-000742

07 August 2021, 2015 PDT

1,805 Interpreted Acres

46°56'N  
46°55'N  
46°54'N  
46°53'N  
46°52'N  
46°51'N  
46°50'N  
46°49'N  
46°48'N  
46°47'N  
46°46'N  
46°45'N  
46°44'N

46°56'N  
46°55'N  
46°54'N  
46°53'N  
46°52'N  
46°51'N  
46°50'N  
46°49'N  
46°48'N  
46°47'N  
46°46'N  
46°45'N  
46°44'N



Earthstar Geographics

115°33'W 115°32'W 115°31'W 115°30'W 115°29'W 115°28'W 115°27'W 115°26'W 115°25'W 115°24'W 115°23'W 115°22'W 115°21'W 115°20'W

- Isolated Heat
- Burn Perimeter
- Intense Heat
- Scattered Heat

Scale: 1:100,000  
 Projection: WGS 1984  
 Produced by: Owyhee Air Research, LLC  
 IR Interpreter: S. Osberg  
 Contact: [fire@owyheear.com](mailto:fire@owyheear.com) (208) 442-5405

