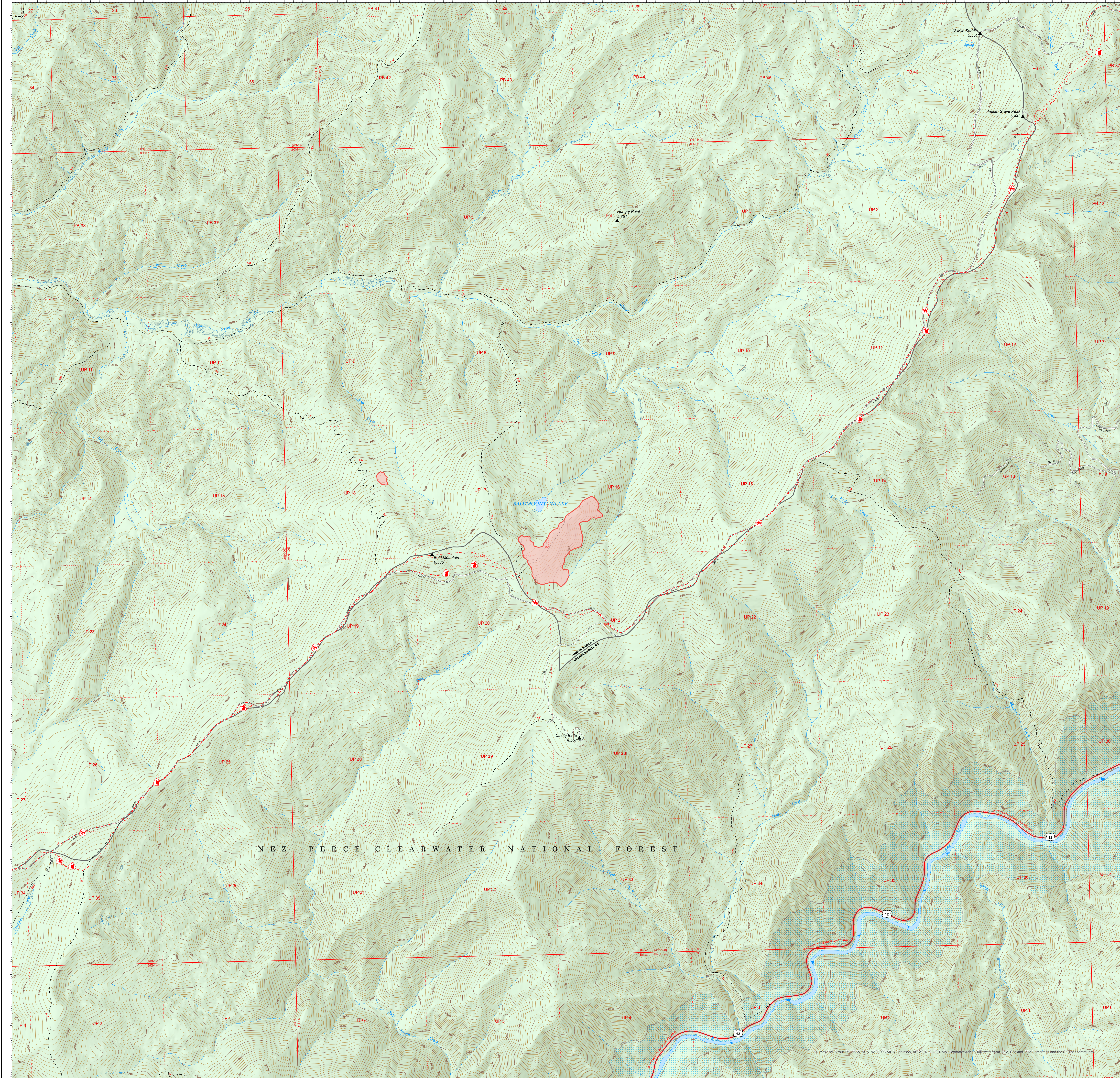


-115°18'20"-115°18'5"-115°17'50" -115°17'30" -115°17'10" -115°16'50" -115°16'30" -115°16'10" -115°15'50" -115°15'30" -115°15'10" -115°14'50" -115°14'30" -115°14'10" -115°13'50" -115°13'30" -115°13'10" -115°12'50" -115°12'30" -115°12'10" -115°11'50" -115°11'30" -115°11'10" -115°10'50" -115°10'30" -115°10'10"-115°9'55" -115°9'40" -115°9'25" -115°9'10" -115°8'55" -115°8'40" -115°8'25" -115°8'10"



**USDA Storm Theatre Complex**  
**ID-NCF-000742**  
 Bald Mountain Fire  
 Operations  
 July 29, 2021



- - - National Designated Trail
- - - Trail
- - - National Designated Trail
- Primary Highway
- - - Dirt (Not Paved)
- - - Dirt Roads
- - - Unimproved Roads
- - - Closed Roads
- - - Stream/River; Artificial Path
- - - Stream/River Intermittent
- - - Ranger District Boundary
- - - Federal Wilderness Boundary
- - - Lake / Pond
- - - Wild and Scenic River
- - - Wildfire Daily Fire Perimeter
- - - Forest Service Land

