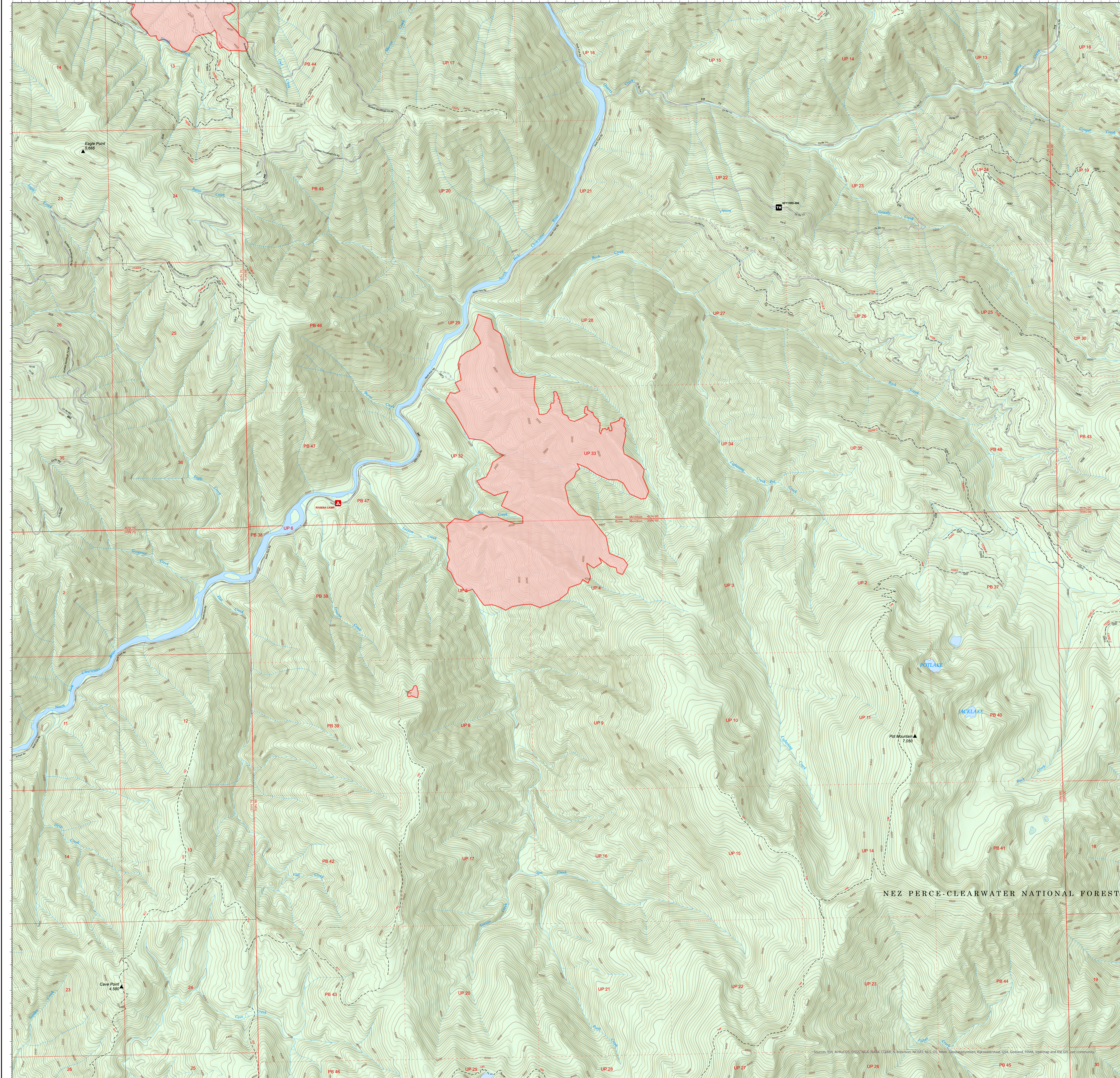


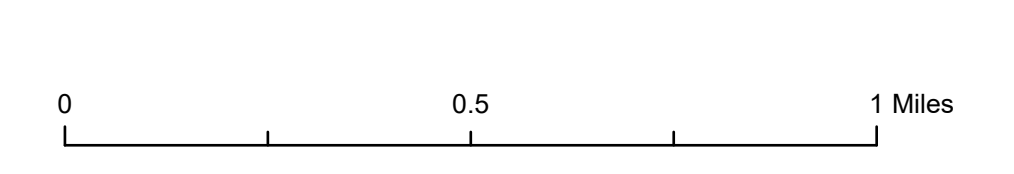
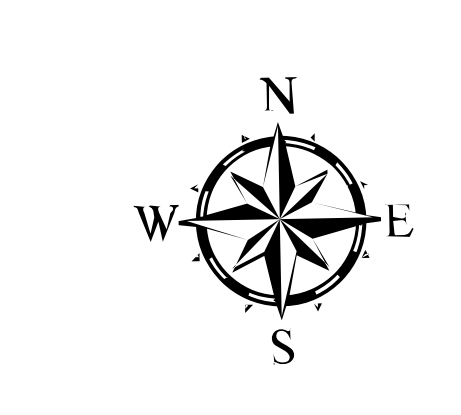
-115°32'55" -115°32'35" -115°32'15" -115°32' -115°31'45" -115°31'25" -115°31'5" -115°30'50" -115°30'30" -115°30'10" -115°29'50" -115°29'30" -115°29'10" -115°28'50" -115°28'30" -115°28'10" -115°27'50" -115°27'30" -115°27'10" -115°26'50" -115°26'30" -115°26'10" -115°25'50" -115°25'30" -115°25'10" -115°24'50" -115°24'30" -115°24'10" -115°23'50" -115°23'30" -115°23'10" -115°22'50" -115°22'30"



ID-NCF-000742

Bar Creek Fire
Operations
July 29, 2021

- Campground
- Trailhead
- National Designated Trail
- Trail
- Dirt (Not Paved)
- Gravel Road
- Dirt Roads
- Unimproved Roads
- Closed Roads
- Stream/River; Artificial Path
- Stream/River Intermittent
- Ranger District Boundary
- Federal Wilderness Boundary
- Lake / Pond
- Lake / Pond (Intermittent)
- Wild and Scenic River
- Wildfire Daily Fire Perimeter
- Forest Service Land



NEZ PERCE-CLEARWATER NATIONAL FOREST