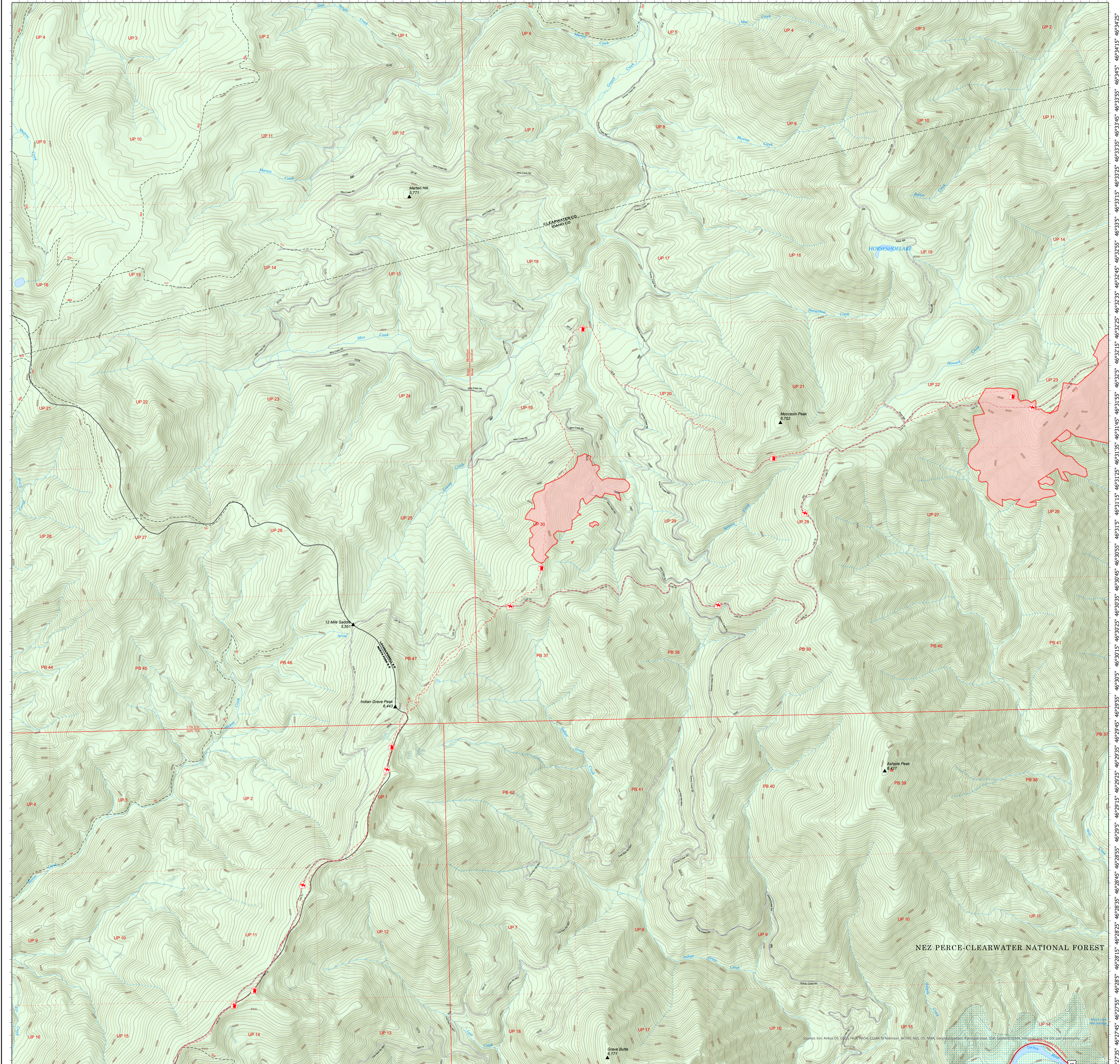


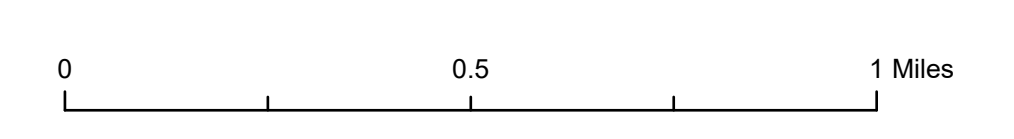
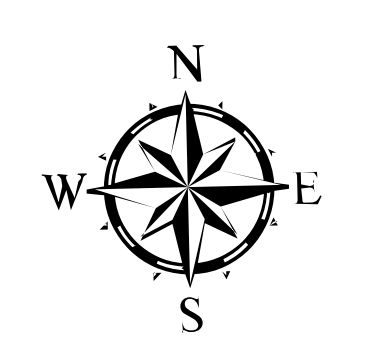
-115°12'20"-115°12'55"-115°11'50" -115°11'30" -115°11'10" -115°10'50" -115°10'30" -115°10'10"-115°9'55"-115°9'40" -115°9'25" -115°9'10" -115°8'55" -115°8'40" -115°8'25" -115°8'10" -115°7'55" -115°7'40" -115°7'25" -115°7'10" -115°6'55" -115°6'40" -115°6'25" -115°6'10" -115°5'55" -115°5'40" -115°5'25" -115°5'10" -115°4'55" -115°4'40" -115°4'25" -115°4'10" -115°3'55" -115°3'40" -115°3'25" -115°3'10" -115°2'55" -115°2'40" -115°2'25" -115°2'10" -115°1'55"



USDA Storm Theatre Complex
ID-NCF-000742
Saddle Camp Fire
Operations
July 29, 2021



- - - National Designated Trail
- - - Trail
- - - National Designated Trail
- Primary Highway
- - - Dirt (Not Paved)
- - - Gravel Road
- - - Dirt Road
- - - Unimproved Roads
- - - Closed Roads
- - - Stream/River; Artificial Path
- - - Stream/River Intermittent
- - - Ranger District Boundary
- - - Federal Wilderness Boundary
- - - Lake / Pond
- - - Wild and Scenic River
- - - Wildfire Daily Fire Perimeter
- - - Forest Service Land



NEZ PERCE-CLEARWATER NATIONAL FOREST