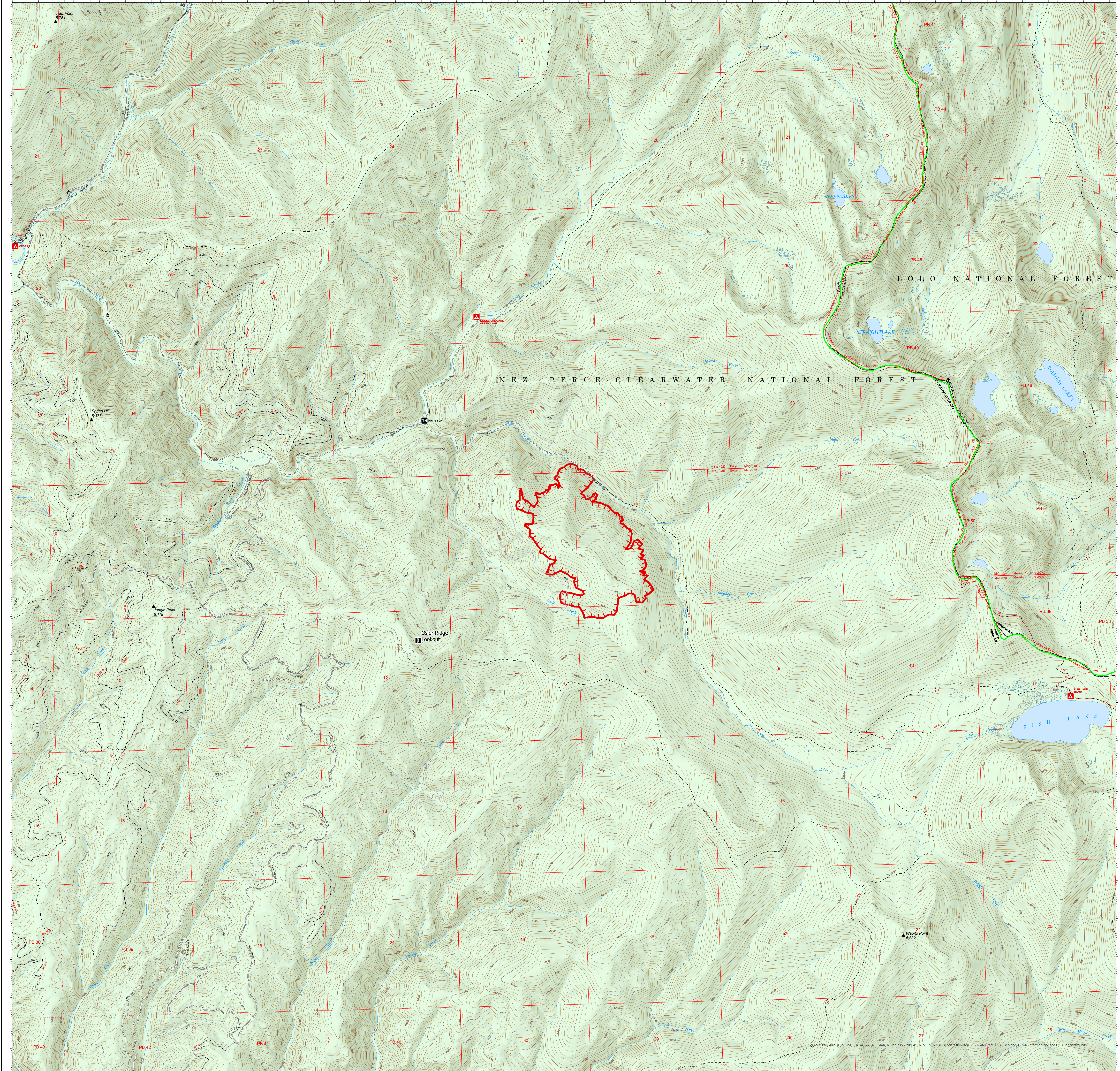


115°43'5" -115°42'0" -115°4'5" -115°3'50" -115°3'35" -115°3'20" -115°3'5" -115°2'50" -115°2'35" -115°2'20" -115°2'5" -115°1'50" -115°1'35" -115°1'20" -115°1'5" -115°0'50" -115°0'35" -115°0'20" -115°0'5" -114°59'50" -114°59'30" -114°59'10" -114°58'50" -114°58'30" -114°58'10" -114°57'50" -114°57'30" -114°57'10" -114°56'50" -114°56'30" -114°56'10" -114°55'50" -114°55'30" -114°55'10" -114°54'50" -114°54'30" -114°54'10"



USDA Storm Theatre Complex



ID-NCF-000742

Lake Fire
Operations
August 1, 2021

- Campground
- Trailhead
- Lookout
- National Designated Trail
- Trail
- National Designated Trail
- Tunnel; Bridge
- Dirt (Not Paved)
- Paved Road
- Gravel Road
- Dirt Roads
- Unimproved Roads
- Closed Roads
- Stream/River; Artificial Path
- Stream/River Intermittent
- Fire Edge
- Ranger District Boundary
- Federal Wilderness Boundary
- Lake / Pond
- Lake / Pond (Intermittent)
- Wild and Scenic River
- Forest Service Land

