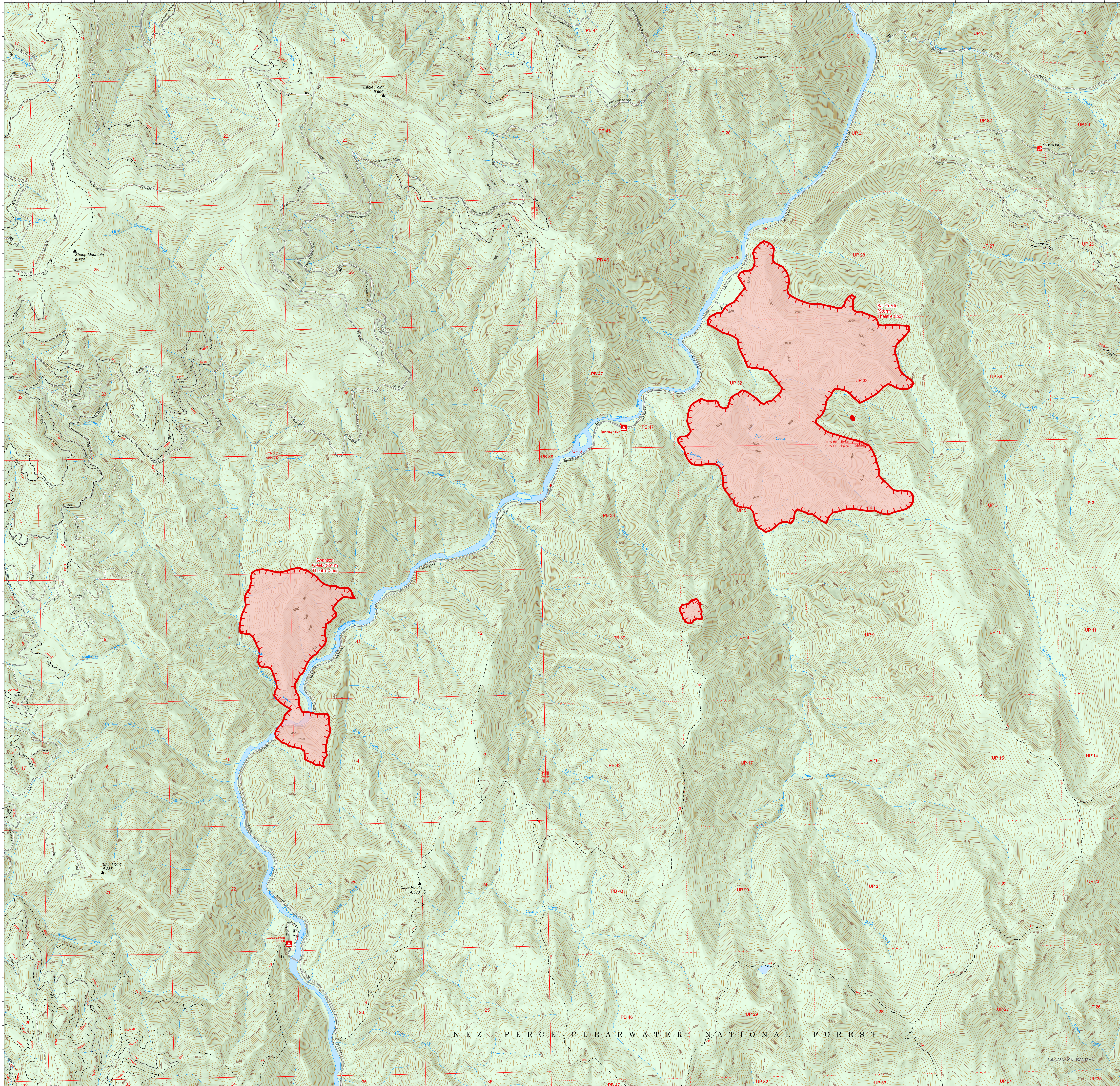


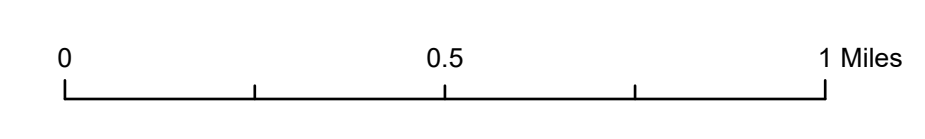
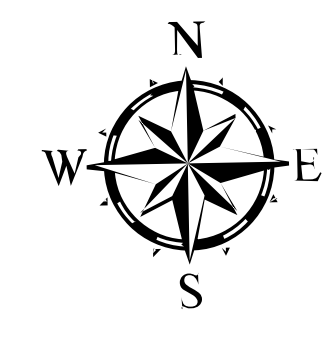
-115°36' -115°35'40" -115°35'20" -115°35' -115°34'40" -115°34'20" -115°34' -115°33'40" -115°33'20" -115°33' -115°32'40" -115°32'20" -115°32' -115°31'40" -115°31'20" -115°31' -115°30'40" -115°30'20" -115°30' -115°29'40" -115°29'20" -115°29' -115°28'40" -115°28'20" -115°28' -115°27'40" -115°27'20" -115°27' -115°26'40" -115°26'20" -115°26' -115°25'40" -115°25'20" -115°25'



USDA Storm Theatre Complex
ID-NCF-000742
Bar Creek and Swanson Creek
Operations
August 4, 2021



- Fire Perimeter
- Fire Edge
- Polygon Type
- Wildfire Daily Fire Perimeter
- Campground
- Trailhead
- Trail
- Dirt (Not Paved)
- Gravel Road
- Dirt Roads
- Unimproved Roads
- Closed Roads
- Administrative FS Boundary
- Ranger District Boundary



NEZ PERCE CLEARWATER NATIONAL FOREST