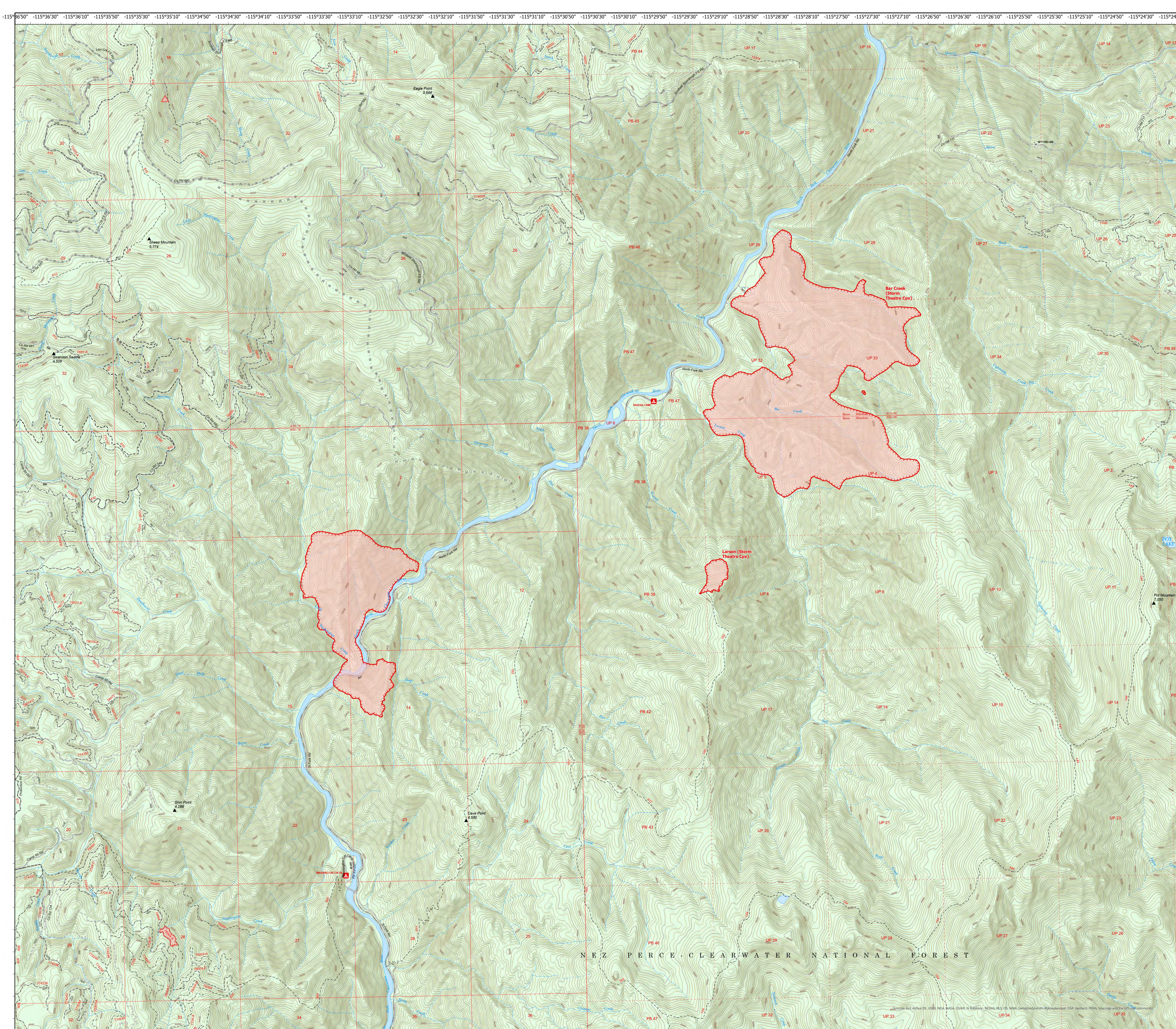


# Storm Theatre Complex

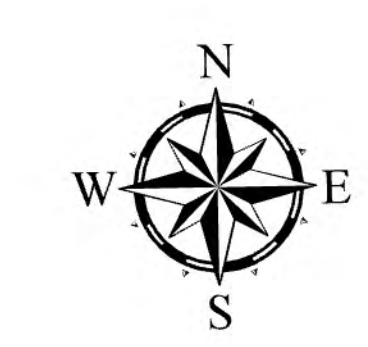
ID-NCF-000742

Bar Creek, Swanson Creek, & Larson  
Operations  
August 8, 2021

- Ops Planned
  - Planned Hand Line
  - Planned Mixed Construction Line
  - Planned Road as Line
- Fire Perimeter
  - Fire Edge
  - Campground
  - Trailhead
  - National Designated Trail
  - Trail
  - Tunnel; Bridge
  - Dirt (Not Paved)
  - Gravel Road
  - Dirt Roads
  - Unimproved Roads
  - Closed Roads
  - Stream/River; Artificial Path
  - Stream/River Intermittent
  - Ranger District Boundary
  - Federal Wilderness Boundary
  - Lake / Pond
  - Wild and Scenic River
- Polygon Type
  - Wildfire Daily Fire Perimeter
  - Forest Service Land



NEZ PERCE CLEARWATER NATIONAL FOREST



0 0.5 1 Miles

