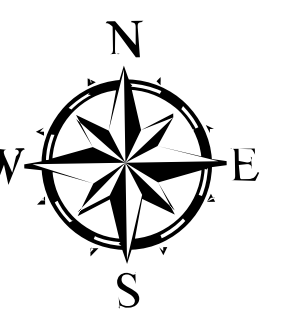


Storm Theatre Complex

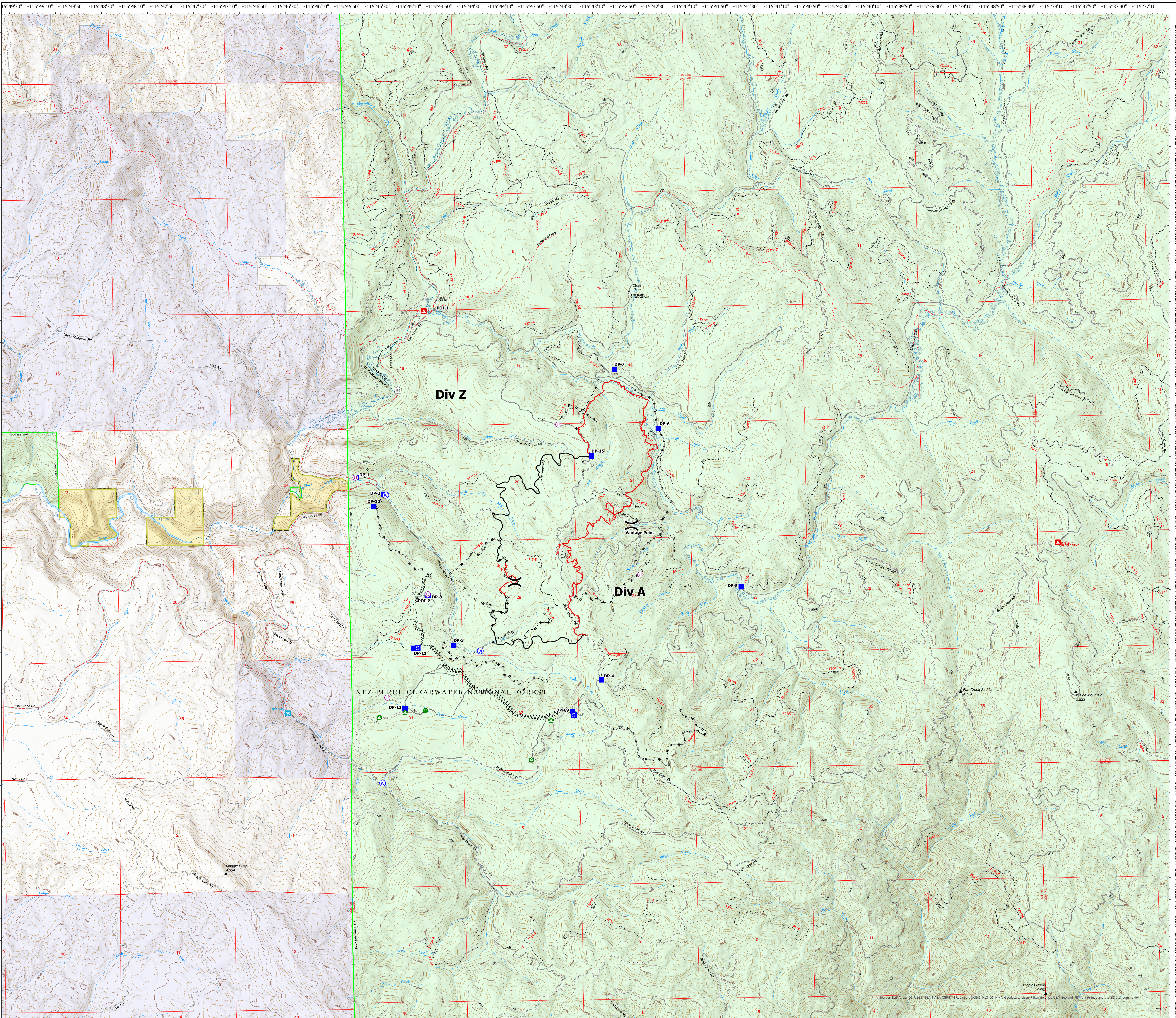
ID-NCF-000742

Snow Creek Operations
August 14, 2021

- Unimproved Landing Area
-) Division Break
- Drop Point
- Staging Area
- Other
- ⚡ Stream Crossing
- ⚡ Landing or Log Deck
- ⊙ Water Source
- ⊙ Completed Dozer Line
- W Completed Fuel Break
- ⊙ Completed Hand Line
- ⊙ Completed Road as Line
- ⊙ Other
- Fire Edge
- Contained Line
- ▲ Campground
- ⊙ Trailhead
- ⊙ Snowpark
- ⊙ National Designated Trail
- ⊙ Trail
- ⊙ National Designated Trail
- ⊙ Tunnel; Bridge
- ⊙ Dirt (Not Paved)
- ⊙ Gravel Road
- ⊙ Dirt Roads
- ⊙ Unimproved Roads
- ⊙ Closed Roads
- ⊙ Stream/River; Artificial Path
- ⊙ Stream/River Intermittent
- ⊙ Ranger District Boundary
- ⊙ Federal Wilderness Boundary
- ⊙ Lake / Pond
- ⊙ Wild and Scenic River
- ⊙ Forest Service Land
- ⊙ Other State Lands
- ⊙ Bureau of Land Management Lands



0 0.5 1 Miles



NEZ PERCE-CLEARWATER NATIONAL FOREST

Div Z

Div A

Vantage Point

115°49'30" -115°49'10" -115°48'50" -115°48'30" -115°48'10" -115°47'50" -115°47'30" -115°47'10" -115°46'50" -115°46'30" -115°46'10" -115°45'50" -115°45'30" -115°45'10" -115°44'50" -115°44'30" -115°44'10" -115°43'50" -115°43'30" -115°43'10" -115°42'50" -115°42'30" -115°42'10" -115°41'50" -115°41'30" -115°41'10" -115°40'50" -115°40'30" -115°40'10" -115°39'50" -115°39'30" -115°39'10" -115°38'50" -115°38'30" -115°38'10" -115°37'50" -115°37'30" -115°37'10"

46°12'20" 46°12'00" 46°11'40" 46°11'20" 46°11'00" 46°10'40" 46°10'20" 46°10'00" 46°9'40" 46°9'20" 46°9'00" 46°8'40" 46°8'20" 46°8'00" 46°7'40" 46°7'20" 46°7'00" 46°6'40" 46°6'20" 46°6'00" 46°5'40" 46°5'20" 46°5'00" 46°4'40" 46°4'20" 46°4'00" 46°3'40" 46°3'20" 46°3'00" 46°2'40" 46°2'20" 46°2'00" 46°1'40" 46°1'20" 46°1'00" 46°0'40" 46°0'20" 46°0'00"