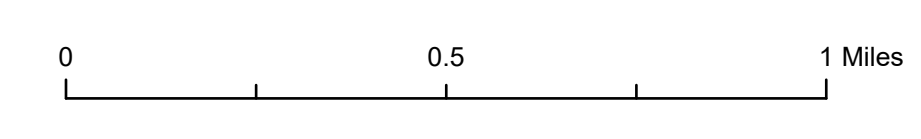
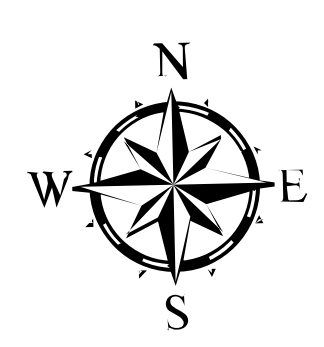
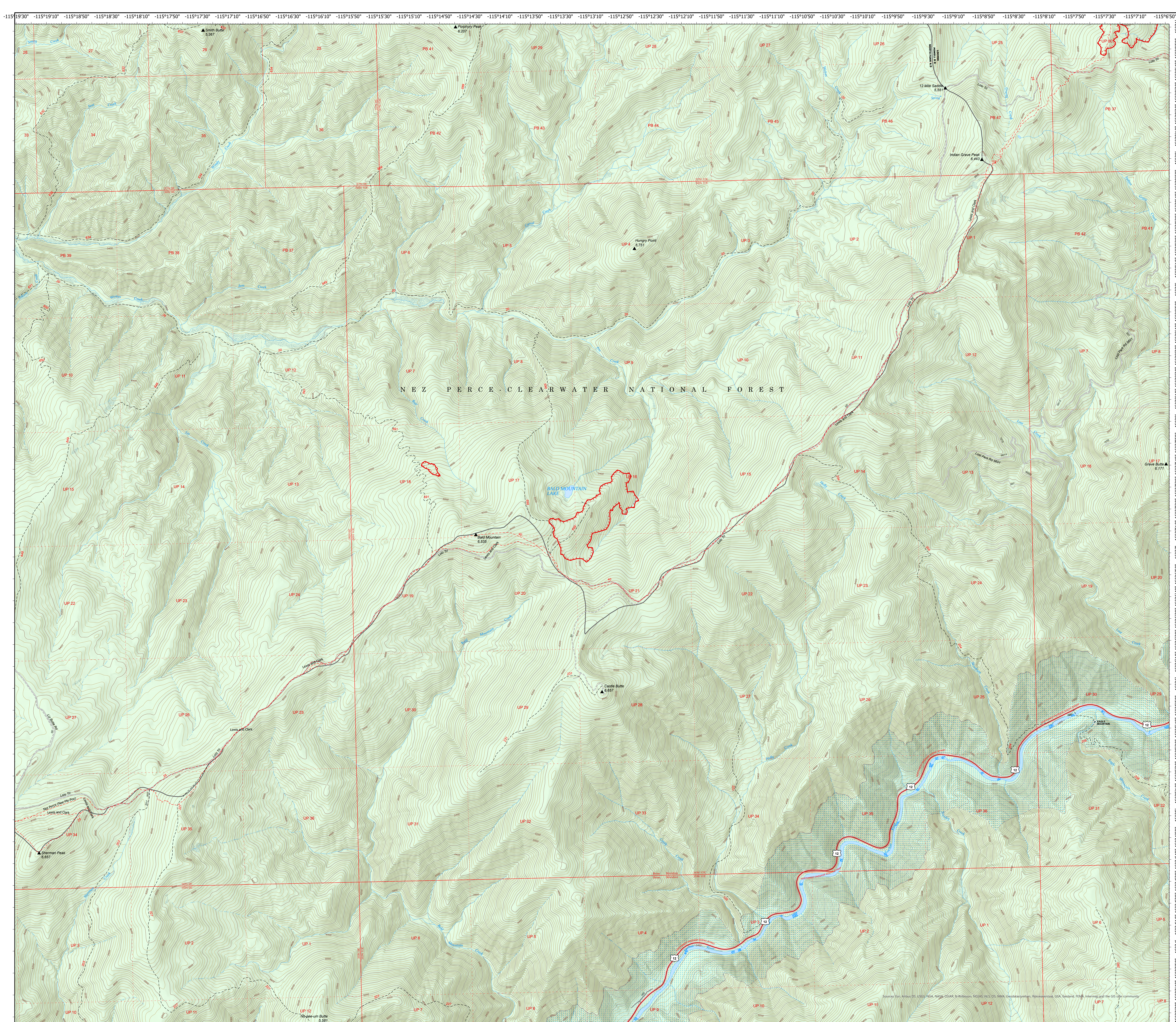


# Storm Theatre Complex

ID-NCF-000742

Bald Mountain Operations  
August 16, 2021

- Fire Edge
- Trailhead
- National Designated Trail
- Trail
- National Designated Trail
- Tunnel; Bridge
- Primary Highway
- Paved Roads
- Dirt (Not Paved)
- Dirt Roads
- Unimproved Roads
- Closed Roads
- Stream/River; Artificial Path
- Stream/River Intermittent
- Ranger District Boundary
- Federal Wilderness Boundary
- Lake / Pond
- Wild and Scenic River
- Forest Service Land



115°19'30" 115°19'10" 115°18'50" 115°18'30" 115°18'10" 115°17'50" 115°17'30" 115°17'10" 115°16'50" 115°16'30" 115°16'10" 115°15'50" 115°15'30" 115°15'10" 115°14'50" 115°14'30" 115°14'10" 115°13'50" 115°13'30" 115°13'10" 115°12'50" 115°12'30" 115°12'10" 115°11'50" 115°11'30" 115°11'10" 115°10'50" 115°10'30" 115°10'10" 115°9'50" 115°9'30" 115°9'10" 115°8'50" 115°8'30" 115°8'10" 115°7'50" 115°7'30" 115°7'10" 115°6'50" 46°30' 46°29' 46°28' 46°27' 46°26' 46°25' 46°24' 46°23' 46°22' 46°21' 46°20' 46°19' 46°18' 46°17' 46°16' 46°15' 46°14' 46°13' 46°12' 46°11' 46°10' 46°9' 46°8' 46°7' 46°6' 46°5' 46°4' 46°3' 46°2' 46°1' 46°0' 46°59' 46°58' 46°57' 46°56' 46°55' 46°54' 46°53' 46°52' 46°51' 46°50' 46°49' 46°48' 46°47' 46°46' 46°45' 46°44' 46°43' 46°42' 46°41' 46°40' 46°39' 46°38' 46°37' 46°36' 46°35' 46°34' 46°33' 46°32' 46°31' 46°30' 46°29' 46°28' 46°27' 46°26' 46°25' 46°24' 46°23' 46°22' 46°21' 46°20' 46°19' 46°18' 46°17' 46°16' 46°15' 46°14' 46°13' 46°12' 46°11' 46°10' 46°9' 46°8' 46°7' 46°6' 46°5' 46°4' 46°3' 46°2' 46°1' 46°0' 46°59' 46°58' 46°57' 46°56' 46°55' 46°54' 46°53' 46°52' 46°51' 46°50' 46°49' 46°48' 46°47' 46°46' 46°45' 46°44' 46°43' 46°42' 46°41' 46°40' 46°39' 46°38' 46°37' 46°36' 46°35' 46°34' 46°33' 46°32' 46°31' 46°30' 46°29' 46°28' 46°27' 46°26' 46°25' 46°24' 46°23' 46°22' 46°21' 46°20' 46°19' 46°18' 46°17' 46°16' 46°15' 46°14' 46°13' 46°12' 46°11' 46°10' 46°9' 46°8' 46°7' 46°6' 46°5' 46°4' 46°3' 46°2' 46°1' 46°0' 46°59' 46°58' 46°57' 46°56' 46°55' 46°54' 46°53' 46°52' 46°51' 46°50' 46°49' 46°48' 46°47' 46°46' 46°45' 46°44' 46°43' 46°42' 46°41' 46°40' 46°39' 46°38' 46°37' 46°36' 46°35' 46°34' 46°33' 46°32' 46°31' 46°30' 46°29' 46°28' 46°27' 46°26' 46°25' 46°24' 46°23' 46°22' 46°21' 46°20' 46°19' 46°18' 46°17' 46°16' 46°15' 46°14' 46°13' 46°12' 46°11' 46°10' 46°9' 46°8' 46°7' 46°6' 46°5' 46°4' 46°3' 46°2' 46°1' 46°0'