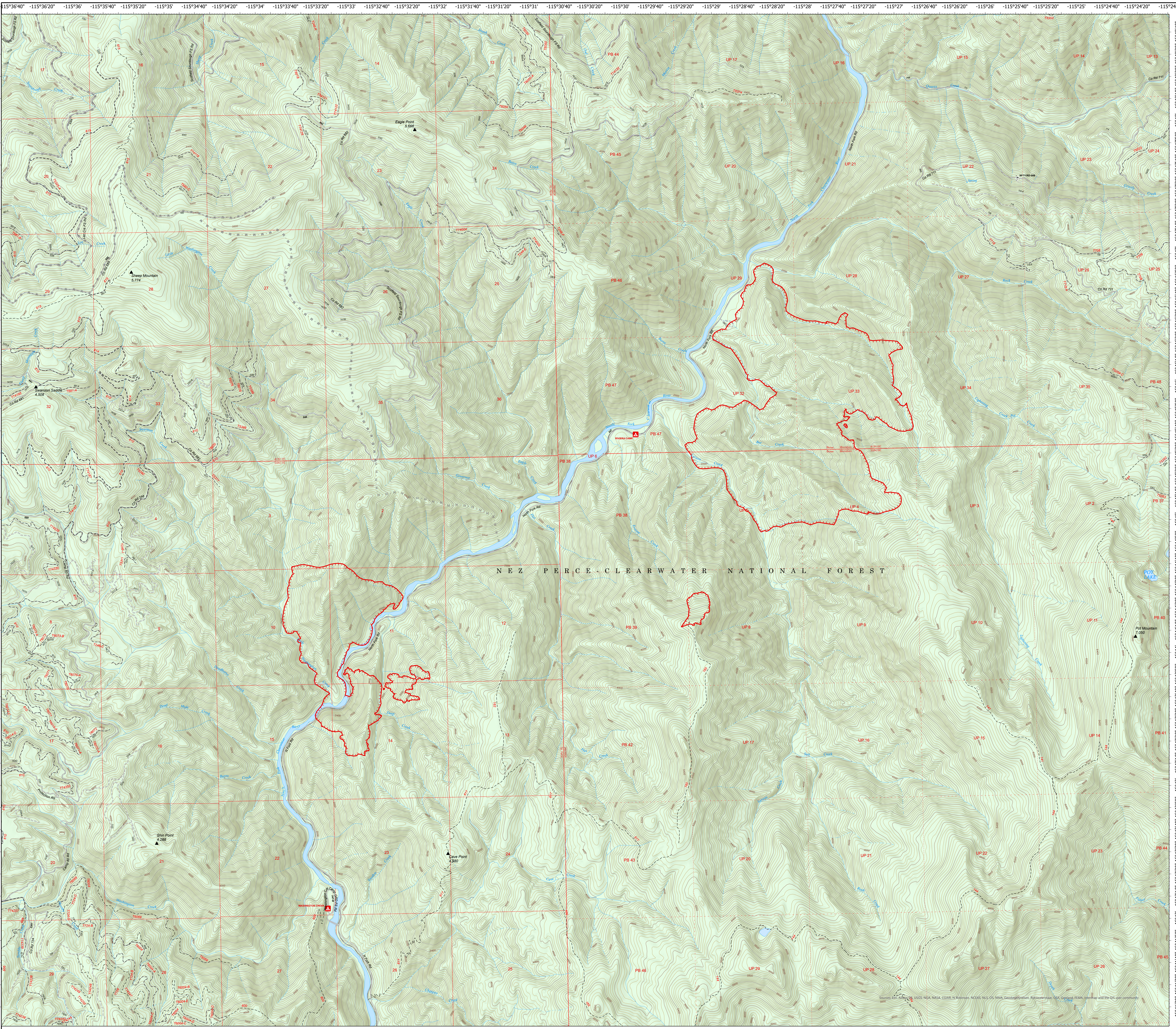


Storm Theatre Complex

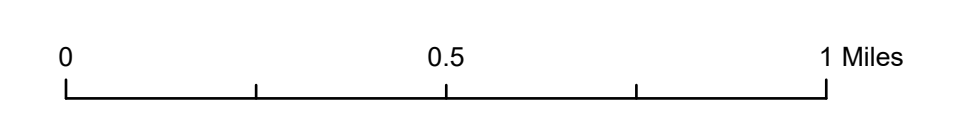
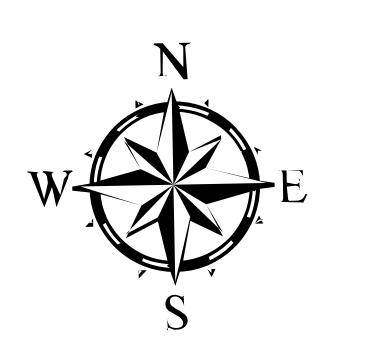
ID-NCF-000742

Bar Creek, Swanson Creek, & Larson Operations
August 16, 2021

- Planned Hand Line
- Planned Mixed Construction Line
- Planned Road as Line
- Fire Edge
- Campground
- Trailhead
- National Designated Trail
- Trail
- Tunnel; Bridge
- Dirt (Not Paved)
- Gravel Road
- Dirt Roads
- Unimproved Roads
- Closed Roads
- Stream/River; Artificial Path
- Stream/River Intermittent
- Ranger District Boundary
- Federal Wilderness Boundary
- Lake / Pond
- Wild and Scenic River
- Forest Service Land



NEZ PERCE-CLEARWATER NATIONAL FOREST



Sources: SRTM, NAD 83, NGA, NASA, CGRS, N Robinson, NEAS, NGS, NMA, Geoposition, Rijkswaterstaat, UGA, Seppang, ESMA, Intermap and the GIS user community.