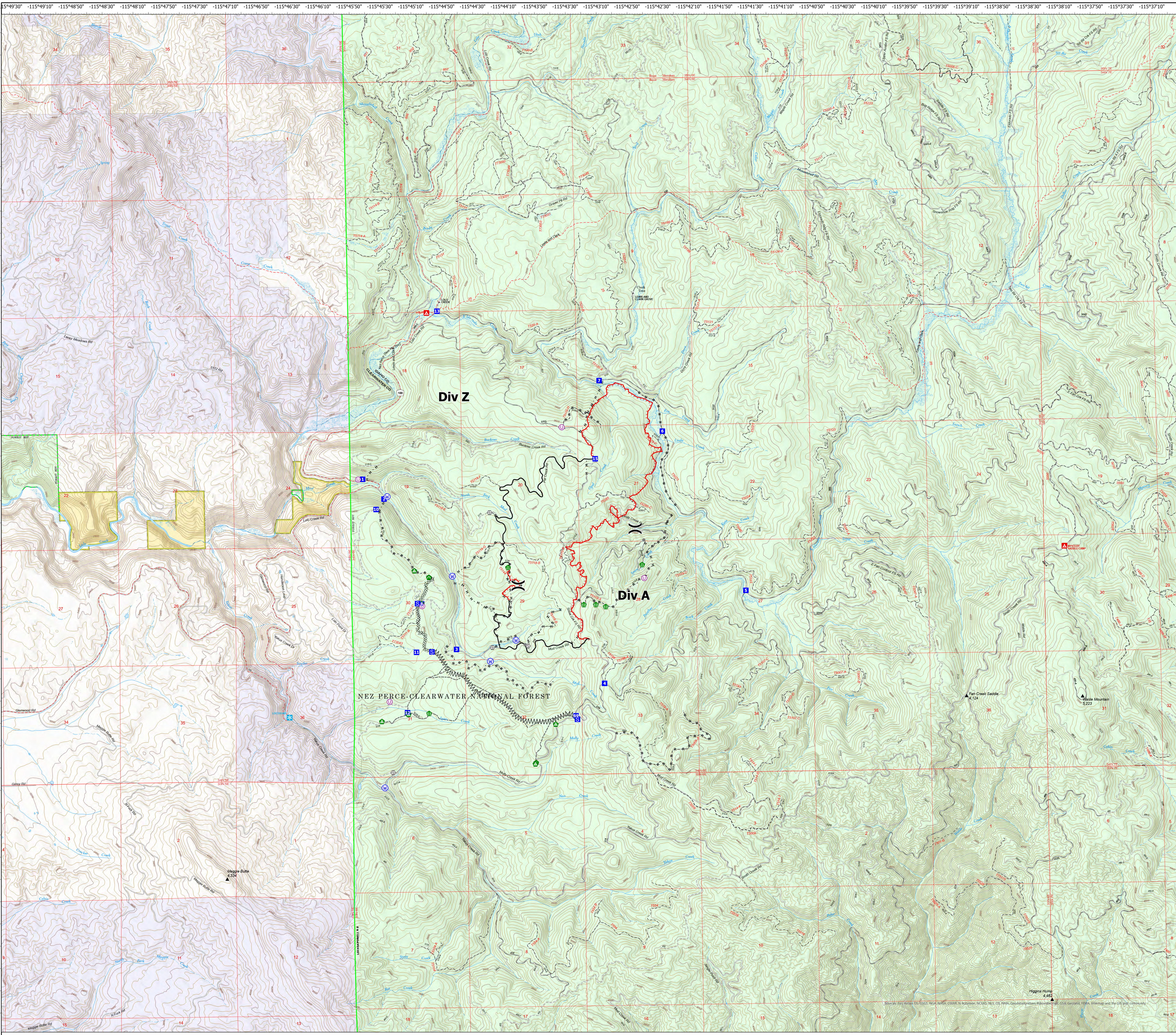
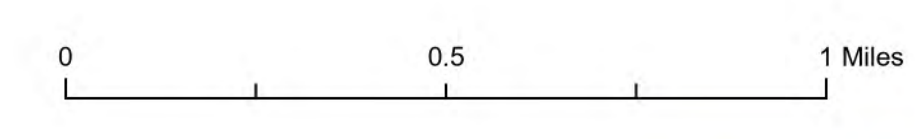
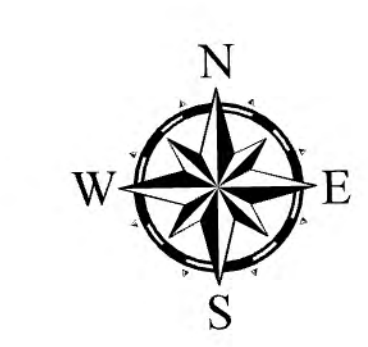


# Storm Theatre Complex

ID-NCF-000742

Snow Creek Operations  
August 19, 2021

- Unimproved Landing Area
- Division Break
- Drop Point
- Staging Area
- Other
- Gate
- Stream Crossing
- Road Repair
- Landing or Log Deck
- Culvert
- Water Source
- Completed Dozer Line
- Completed Fuel Break
- Completed Hand Line
- Completed Road as Line
- Other
- Fire Edge
- Contained Line
- Campground
- Trailhead
- Snowpark
- National Designated Trail
- Trail
- National Designated Trail
- Tunnel; Bridge
- Dirt (Not Paved)
- Gravel Road
- Dirt Roads
- Unimproved Roads
- Closed Roads
- Stream/River; Artificial Path
- Stream/River Intermittent
- Ranger District Boundary
- Federal Wilderness Boundary
- Lake / Pond
- Wild and Scenic River
- Forest Service Land
- Other State Lands
- Bureau of Land Management Lands



-115°49'30" -115°49'10" -115°48'50" -115°48'30" -115°48'10" -115°47'50" -115°47'30" -115°47'10" -115°46'50" -115°46'30" -115°46'10" -115°45'50" -115°45'30" -115°45'10" -115°44'50" -115°44'30" -115°44'10" -115°43'50" -115°43'30" -115°43'10" -115°42'50" -115°42'30" -115°42'10" -115°41'50" -115°41'30" -115°41'10" -115°40'50" -115°40'30" -115°40'10" -115°39'50" -115°39'30" -115°39'10" -115°38'50" -115°38'30" -115°38'10" -115°37'50" -115°37'30" -115°37'10"  
 46°12'20" 46°12'00" 46°11'40" 46°11'20" 46°11'00" 46°10'40" 46°10'20" 46°10'00" 46°9'40" 46°9'20" 46°9'00" 46°8'40" 46°8'20" 46°8'00" 46°7'40" 46°7'20" 46°7'00" 46°6'40" 46°6'20" 46°6'00" 46°5'40" 46°5'20" 46°5'00" 46°4'40" 46°4'20" 46°4'00" 46°3'40" 46°3'20" 46°3'00" 46°2'40" 46°2'20" 46°2'00" 46°1'40" 46°1'20" 46°1'00"