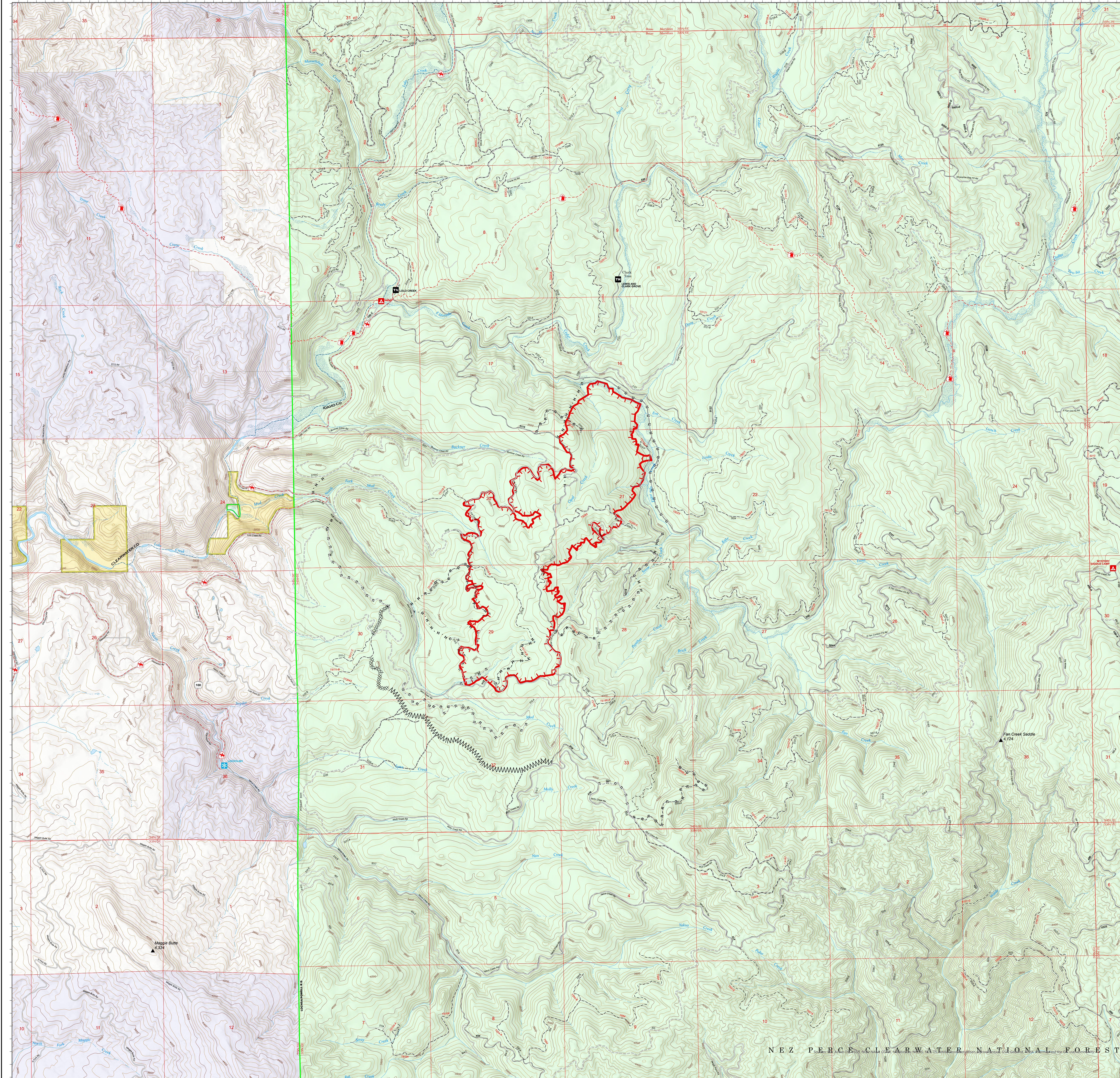


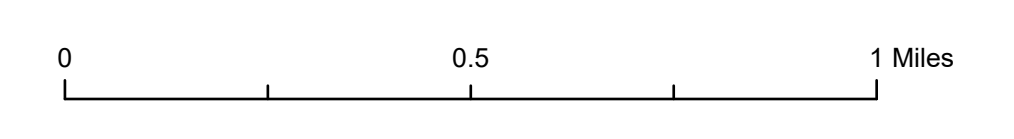
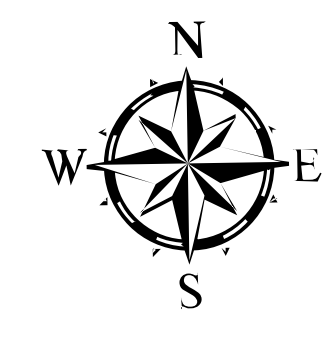
-115°48'25" -115°48'5" -115°47'50" -115°47'30" -115°47'10" -115°46'50" -115°46'30" -115°46'10" -115°45'50" -115°45'30" -115°45'10" -115°44'50" -115°44'30" -115°44'10" -115°43'50" -115°43'30" -115°43'10" -115°42'50" -115°42'30" -115°42'10" -115°41'50" -115°41'30" -115°41'10" -115°40'50" -115°40'30" -115°40'10" -115°39'50" -115°39'30" -115°39'10" -115°38'50" -115°38'30" -115°38'10"



ID-NCF-000742

Snow Creek Fire
Operations
August 2, 2021

- Campground
- Trailhead
- Snowpark
- Lookout
- National Designated Trail
- Trail
- National Designated Trail
- Tunnel; Bridge
- Dirt (Not Paved)
- Gravel Road
- Dirt Road
- Unimproved Roads
- Closed Roads
- Stream/River; Artificial Path
- Stream/River Intermittent
- Completed Dozer Line
- Completed Fuel Break
- Completed Hand Line
- Completed Road as Line
- Other
- Fire Edge
- Ranger District Boundary
- Federal Wilderness Boundary
- Lake / Pond
- Wild and Scenic River
- Forest Service Land



NEZ PERCE CLEARWATER NATIONAL FOREST