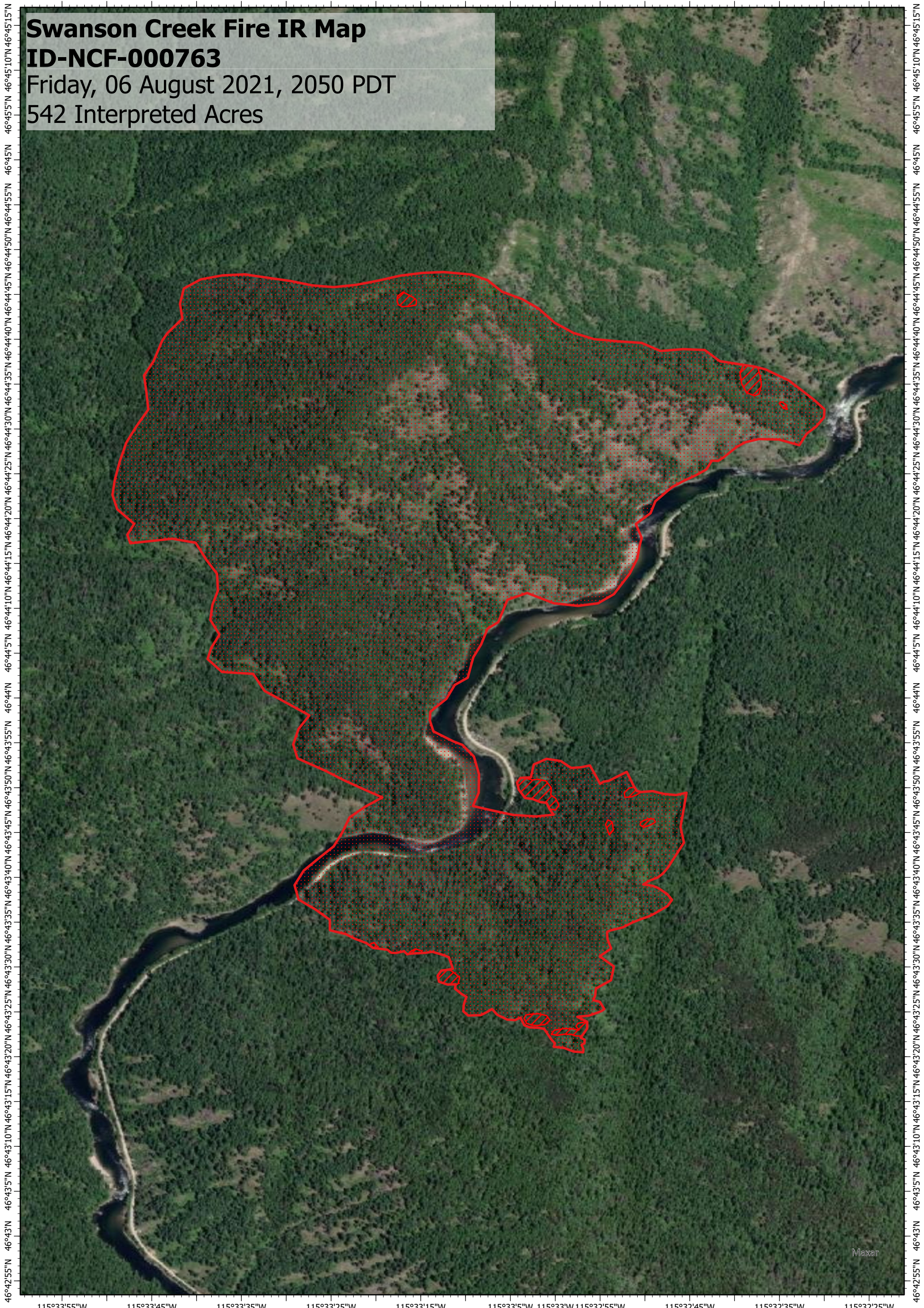





115°33'55"W 115°33'45"W 115°33'35"W 115°33'25"W 115°33'15"W 115°33'5"W 115°33'W 115°32'55"W 115°32'45"W 115°32'35"W 115°32'25"W



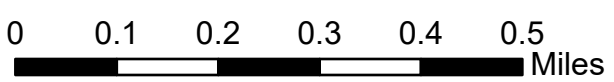
Swanson Creek Fire IR Map
ID-NCF-000763
Friday, 06 August 2021, 2050 PDT
542 Interpreted Acres

46°42'55"N 46°43'N 46°43'5"N 46°43'10"N 46°43'15"N 46°43'20"N 46°43'25"N 46°43'30"N 46°43'35"N 46°43'40"N 46°43'45"N 46°43'50"N 46°43'55"N 46°44'N 46°44'5"N 46°44'10"N 46°44'15"N 46°44'20"N 46°44'25"N 46°44'30"N 46°44'35"N 46°44'40"N 46°44'45"N 46°44'50"N 46°44'55"N 46°45'N 46°45'5"N 46°45'10"N 46°45'15"N

Legend

-  Burn Perimeter
-  Intense Heat
-  Scattered Heat

Scale: 1:12,000
 Projection: WGS 1984
 Produced by: Owyhee Air Research, LLC
 IR Interpreter: K. Hanks
 Contact: fire@owyheeair.com (208) 442-5405



Maxar