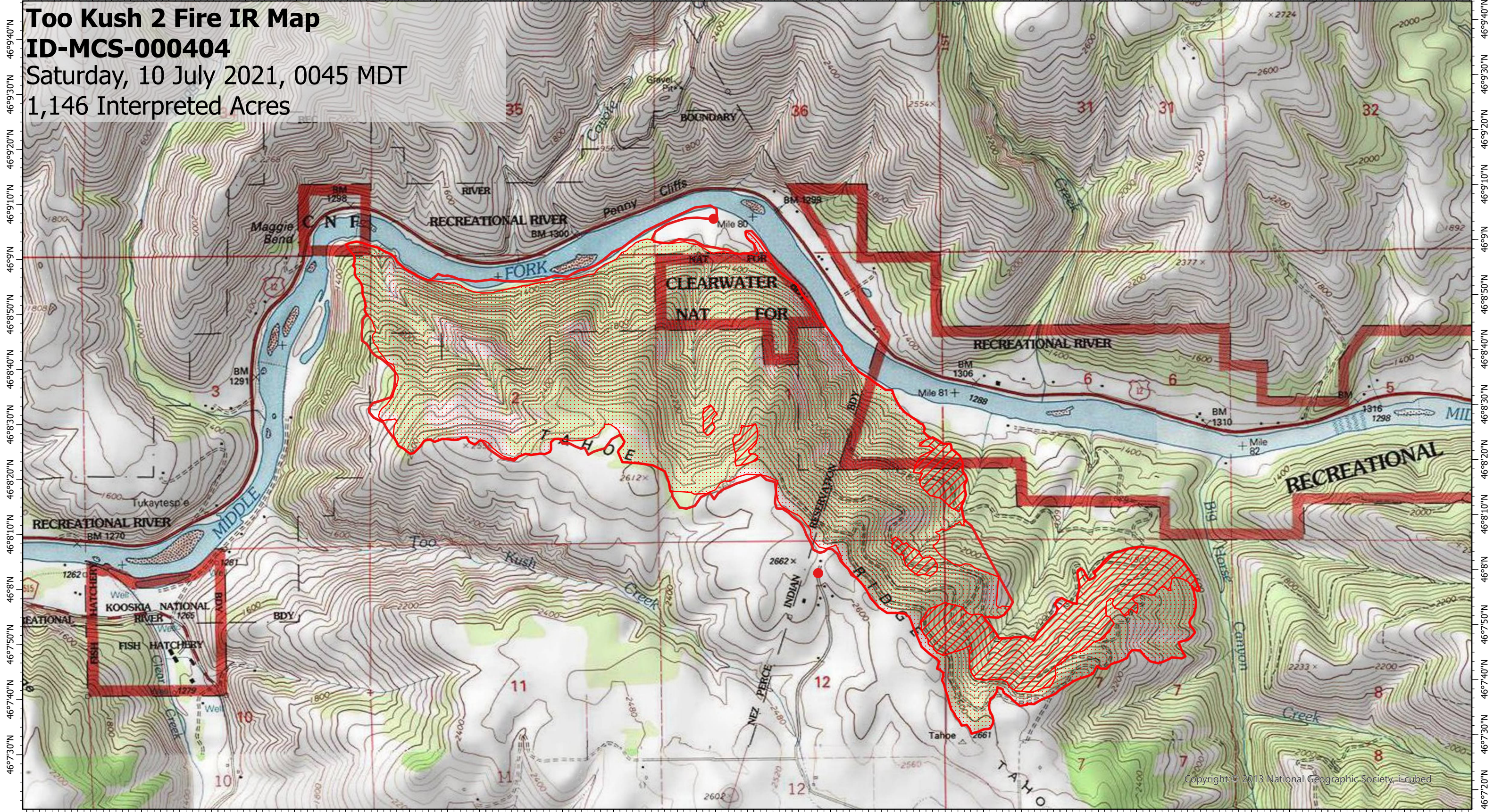


115°57'20"W 115°57'W 115°56'40"W 115°56'20"W 115°56'W 115°55'40"W 115°55'20"W 115°55'W 115°54'40"W 115°54'20"W 115°54'W 115°53'40"W 115°53'20"W 115°53'W 115°52'40"W 115°52'20"W 115°52'W 115°51'40"W 115°51'20"W

Too Kush 2 Fire IR Map

ID-MCS-000404

Saturday, 10 July 2021, 0045 MDT
1,146 Interpreted Acres

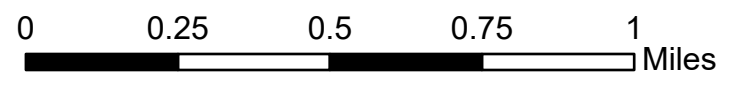


115°57'30"W 115°57'10"W 115°56'50"W 115°56'30"W 115°56'10"W 115°55'50"W 115°55'30"W 115°55'10"W 115°54'50"W 115°54'30"W 115°54'10"W 115°53'50"W 115°53'30"W 115°53'10"W 115°52'50"W 115°52'30"W 115°52'10"W 115°51'50"W 115°51'30"W

Legend

- Isolated Heat
- Scattered Heat
- Intense Heat
- Burn Perimeter

Scale: 1:20,000
 Projection: North American 1983
 Produced by: Owyhee Air Research, LLC
 IR Interpreter: S. Osberg
 Contact: fire@owyheear.com (208) 442-5405



Copyright © 2013 National Geographic Society, i-cubed