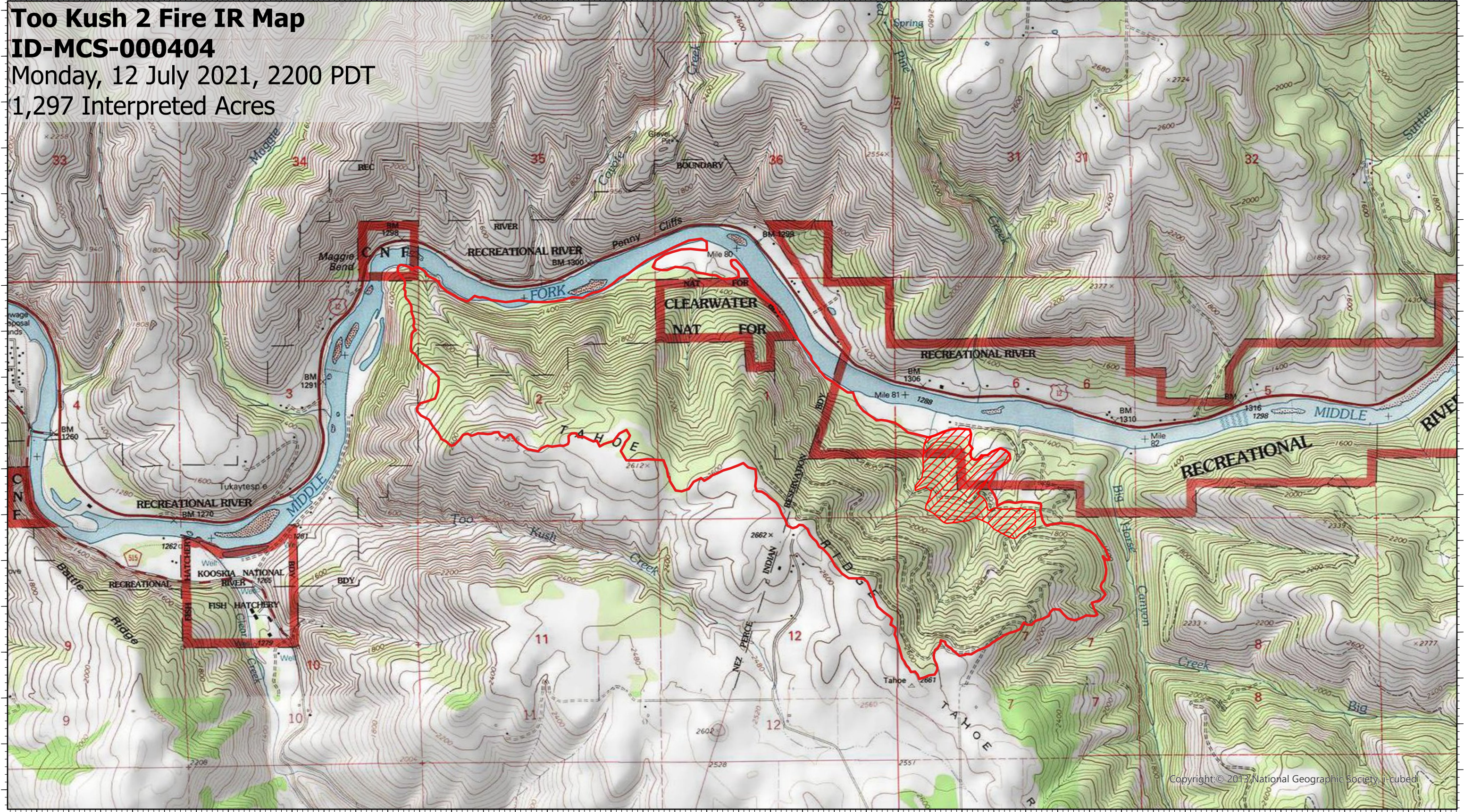




115.967°W 115.961°W 115.956°W 115.95°W 115.945°W 115.939°W 115.933°W 115.928°W 115.922°W 115.917°W 115.911°W 115.906°W 115.9°W 115.894°W 115.889°W 115.883°W 115.878°W 115.872°W 115.867°W 115.861°W 115.856°W 115.85°W 115.844°W

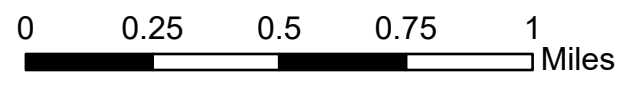
**Too Kush 2 Fire IR Map**  
**ID-MCS-000404**  
Monday, 12 July 2021, 2200 PDT  
1,297 Interpreted Acres



**Legend**

-  Intense Heat
-  Burn Perimeter

Scale: 1:24,000  
 Projection: North American 1983  
 Produced by: Owyhee Air Research, LLC  
 IR Interpreter: S. Osberg  
 Contact: fire@owyheeair.com (208) 442-5405



Copyright © 2013 National Geographic Society, i-cubed

115.967°W 115.961°W 115.956°W 115.95°W 115.945°W 115.939°W 115.933°W 115.928°W 115.922°W 115.917°W 115.911°W 115.906°W 115.9°W 115.894°W 115.889°W 115.883°W 115.878°W 115.872°W 115.867°W 115.861°W 115.856°W 115.85°W 115.844°W

46.119°N

46.122°N

46.125°N

46.128°N

46.13°N

46.133°N

46.136°N

46.139°N

46.142°N

46.144°N

46.147°N

46.15°N

46.153°N

46.156°N

46.158°N

46.161°N

46.164°N

46.167°N

46.119°N

46.122°N

46.125°N

46.128°N

46.13°N

46.133°N

46.136°N

46.139°N

46.142°N

46.144°N

46.147°N

46.15°N

46.153°N

46.156°N

46.158°N

46.161°N

46.164°N

46.167°N