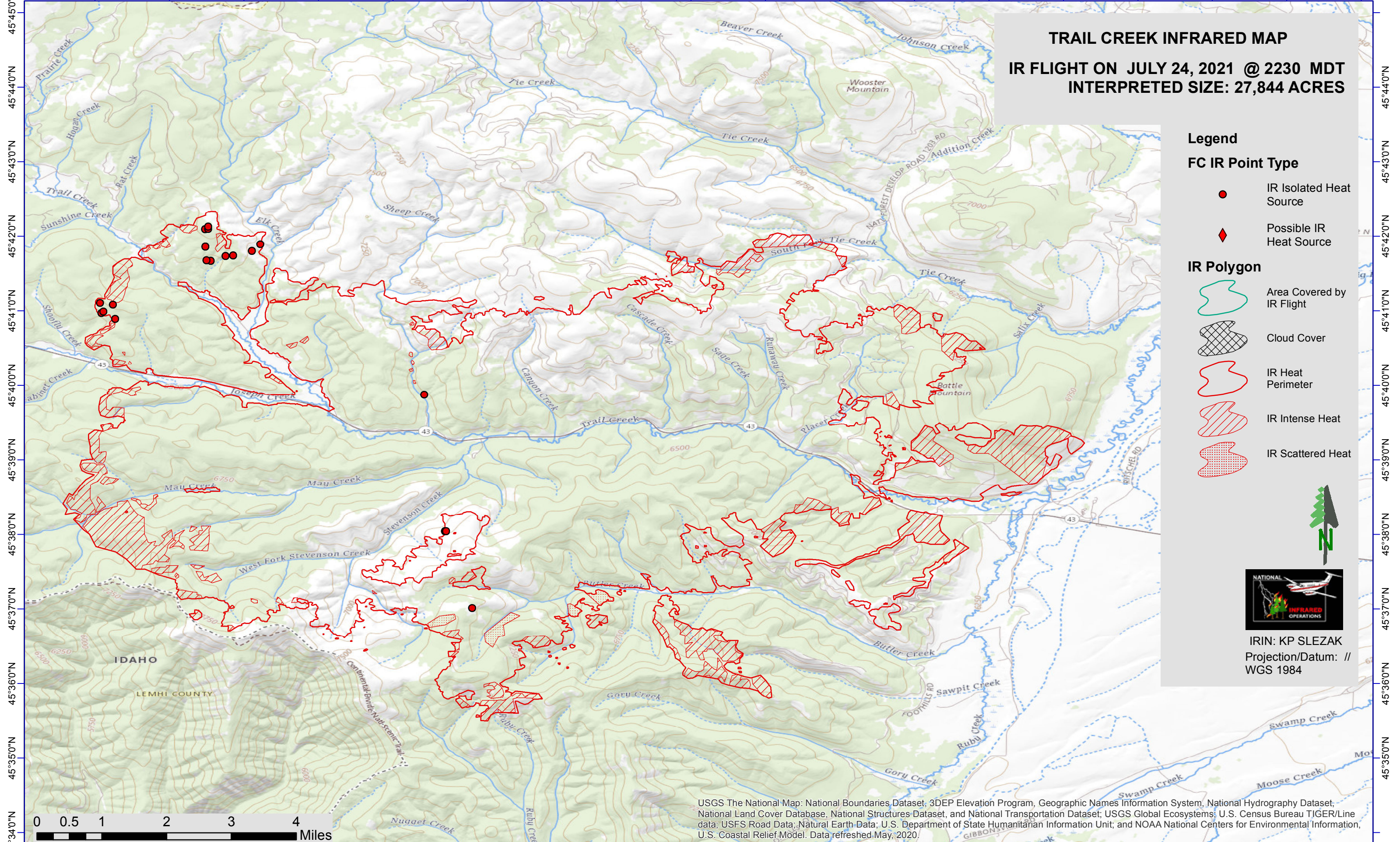


113°52'0"W 113°51'0"W 113°50'0"W 113°49'0"W 113°48'0"W 113°47'0"W 113°46'0"W 113°45'0"W 113°44'0"W 113°43'0"W 113°42'0"W 113°41'0"W 113°40'0"W 113°39'0"W 113°38'0"W 113°37'0"W 113°36'0"W 113°35'0"W

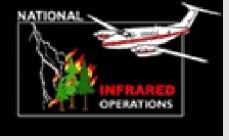


**TRAIL CREEK INFRARED MAP**  
**IR FLIGHT ON JULY 24, 2021 @ 2230 MDT**  
**INTERPRETED SIZE: 27,844 ACRES**

**Legend**

- FC IR Point Type**
- IR Isolated Heat Source
  - ◆ Possible IR Heat Source

- IR Polygon**
- Area Covered by IR Flight
  - Cloud Cover
  - IR Heat Perimeter
  - IR Intense Heat
  - IR Scattered Heat



IRIN: KP SLEZAK  
Projection/Datum: // WGS 1984

0 0.5 1 2 3 4 Miles

USGS The National Map: National Boundaries Dataset, 3DEP Elevation Program, Geographic Names Information System, National Hydrography Dataset, National Land Cover Database, National Structures Dataset, and National Transportation Dataset; USGS Global Ecosystems; U.S. Census Bureau TIGER/Line data; USFS Road Data; Natural Earth Data; U.S. Department of State Humanitarian Information Unit; and NOAA National Centers for Environmental Information, U.S. Coastal Relief Model. Data refreshed May, 2020.

113°52'0"W 113°51'0"W 113°50'0"W 113°49'0"W 113°48'0"W 113°47'0"W 113°46'0"W 113°45'0"W 113°44'0"W 113°43'0"W 113°42'0"W 113°41'0"W 113°40'0"W 113°39'0"W 113°38'0"W 113°37'0"W 113°36'0"W 113°35'0"W