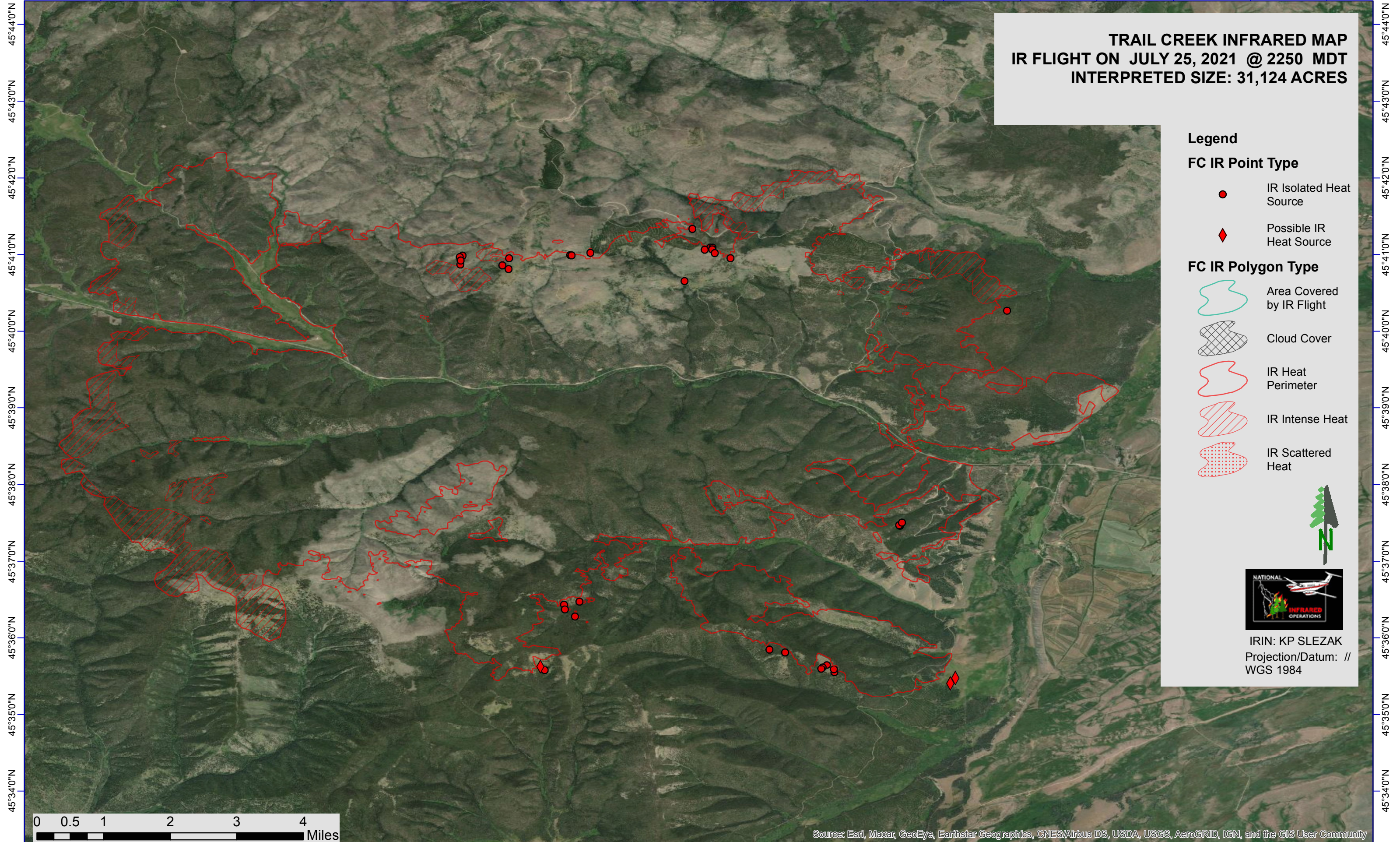




113°52'0"W 113°51'0"W 113°50'0"W 113°49'0"W 113°48'0"W 113°47'0"W 113°46'0"W 113°45'0"W 113°44'0"W 113°43'0"W 113°42'0"W 113°41'0"W 113°40'0"W 113°39'0"W 113°38'0"W 113°37'0"W 113°36'0"W





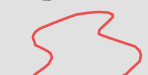


TRAIL CREEK INFRARED MAP
IR FLIGHT ON JULY 25, 2021 @ 2250 MDT
INTERPRETED SIZE: 31,124 ACRES

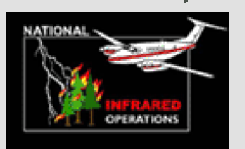
Legend

FC IR Point Type

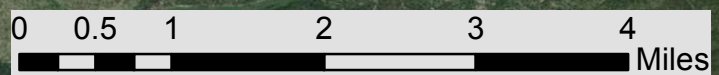
-  IR Isolated Heat Source
-  Possible IR Heat Source

FC IR Polygon Type

-  Area Covered by IR Flight
-  Cloud Cover
-  IR Heat Perimeter
-  IR Intense Heat
-  IR Scattered Heat



IRIN: KP SLEZAK
Projection/Datum: //
WGS 1984



Source: Esri, Maxar, GeoEye, Earthstar Geographics, CNES/Airbus DS, USDA, USGS, AeroGRID, IGN, and the GIS User Community

113°52'0"W 113°51'0"W 113°50'0"W 113°49'0"W 113°48'0"W 113°47'0"W 113°46'0"W 113°45'0"W 113°44'0"W 113°43'0"W 113°42'0"W 113°41'0"W 113°40'0"W 113°39'0"W 113°38'0"W 113°37'0"W 113°36'0"W