

113°55'0"W

113°50'0"W

113°45'0"W

113°40'0"W

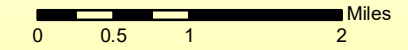
113°35'0"W



Trail Creek Fire MT-BDF-006272

1:80,000

Infrared Map - 09/04/2021
Imagery Date - 09/05/2021
Imagery Time - 2214 MDT
Interpreted Acres - 42,207
IRIN - Chad Horman
NAD83 UTM Zone 12

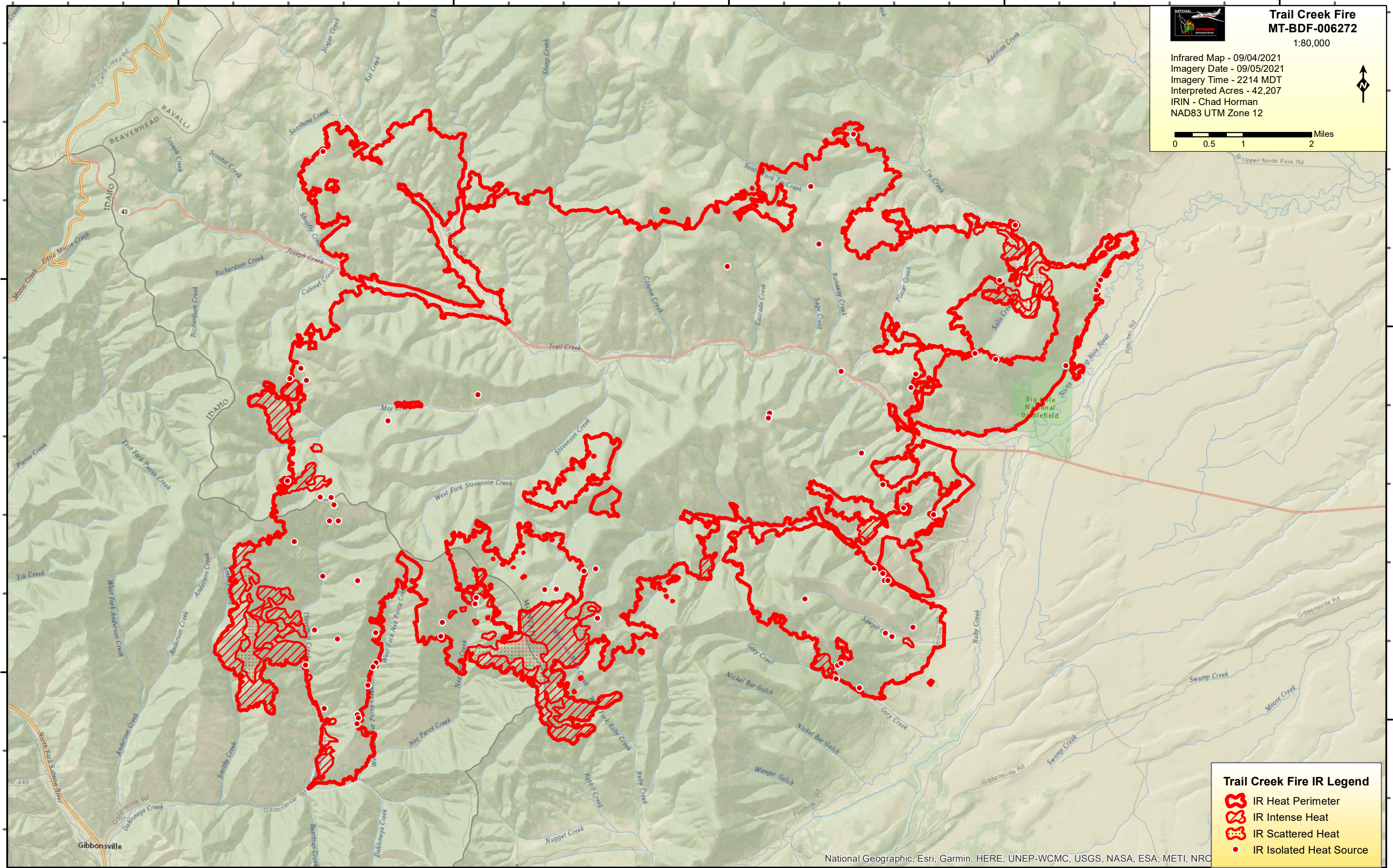


45°40'0"N




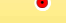
45°35'0"N

45°40'0"N

45°35'0"N



Trail Creek Fire IR Legend

-  IR Heat Perimeter
-  IR Intense Heat
-  IR Scattered Heat
-  IR Isolated Heat Source

National Geographic, Esri, Garmin, HERE, UNEP-WCMC, USGS, NASA, ESA, METI, NRC

113°55'0"W

113°50'0"W

113°45'0"W

113°40'0"W

113°35'0"W