

113°55'0"W

113°50'0"W

113°45'0"W

113°40'0"W

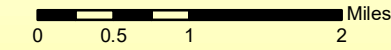
113°35'0"W



### Trail Creek Fire MT-BDF-006272

1:80,000

Infrared Map - 09/07/2021  
Imagery Date - 09/06/2021  
Imagery Time - 2149 MDT  
Interpreted Acres - 44,239  
IRIN - Chad Horman  
NAD83 UTM Zone 12

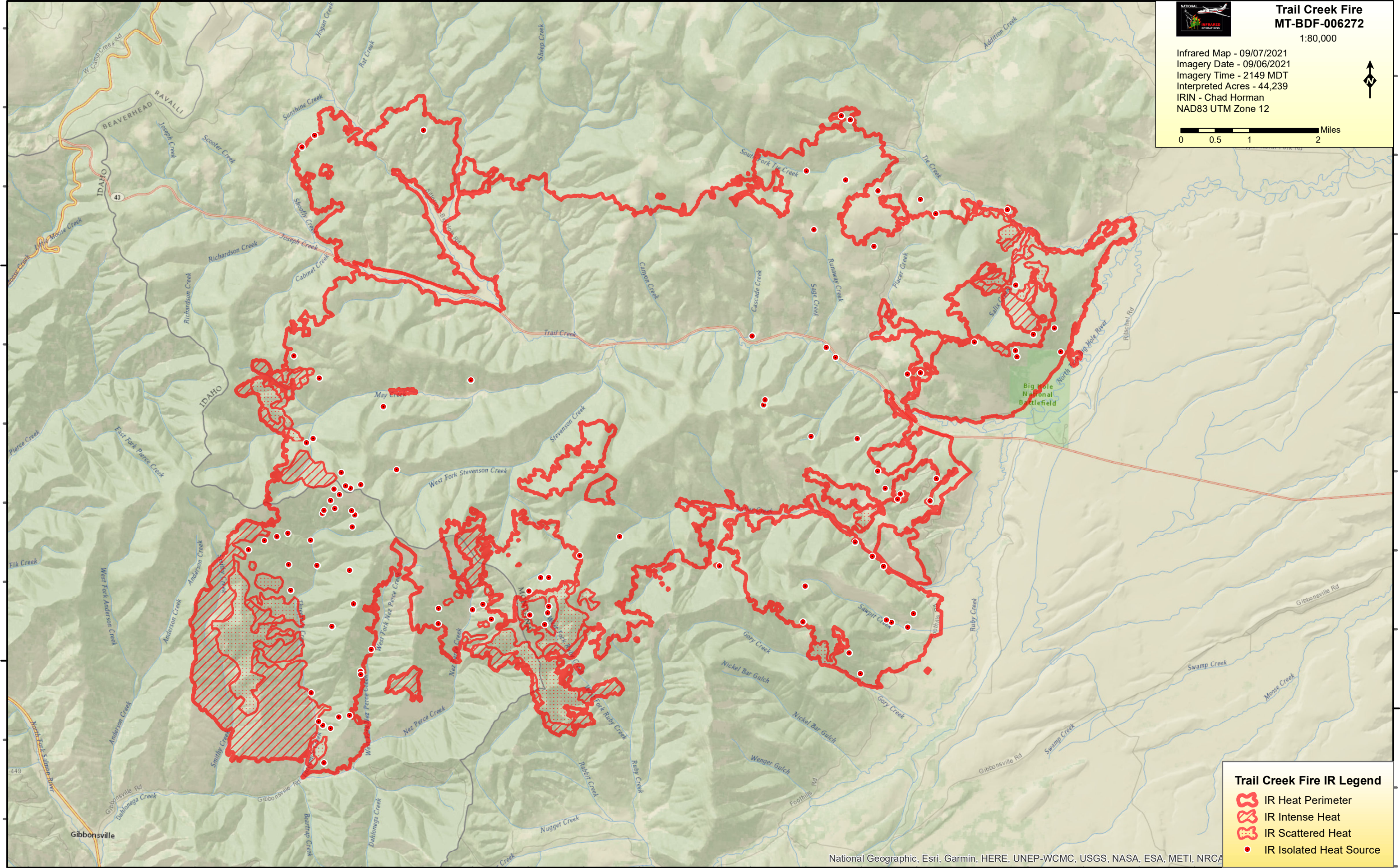


45°40'0"N

45°35'0"N

45°40'0"N

45°35'0"N



#### Trail Creek Fire IR Legend

- IR Heat Perimeter
- IR Intense Heat
- IR Scattered Heat
- IR Isolated Heat Source

National Geographic, Esri, Garmin, HERE, UNEP-WCMC, USGS, NASA, ESA, METI, NRC

113°55'0"W

113°50'0"W

113°45'0"W

113°40'0"W

113°35'0"W