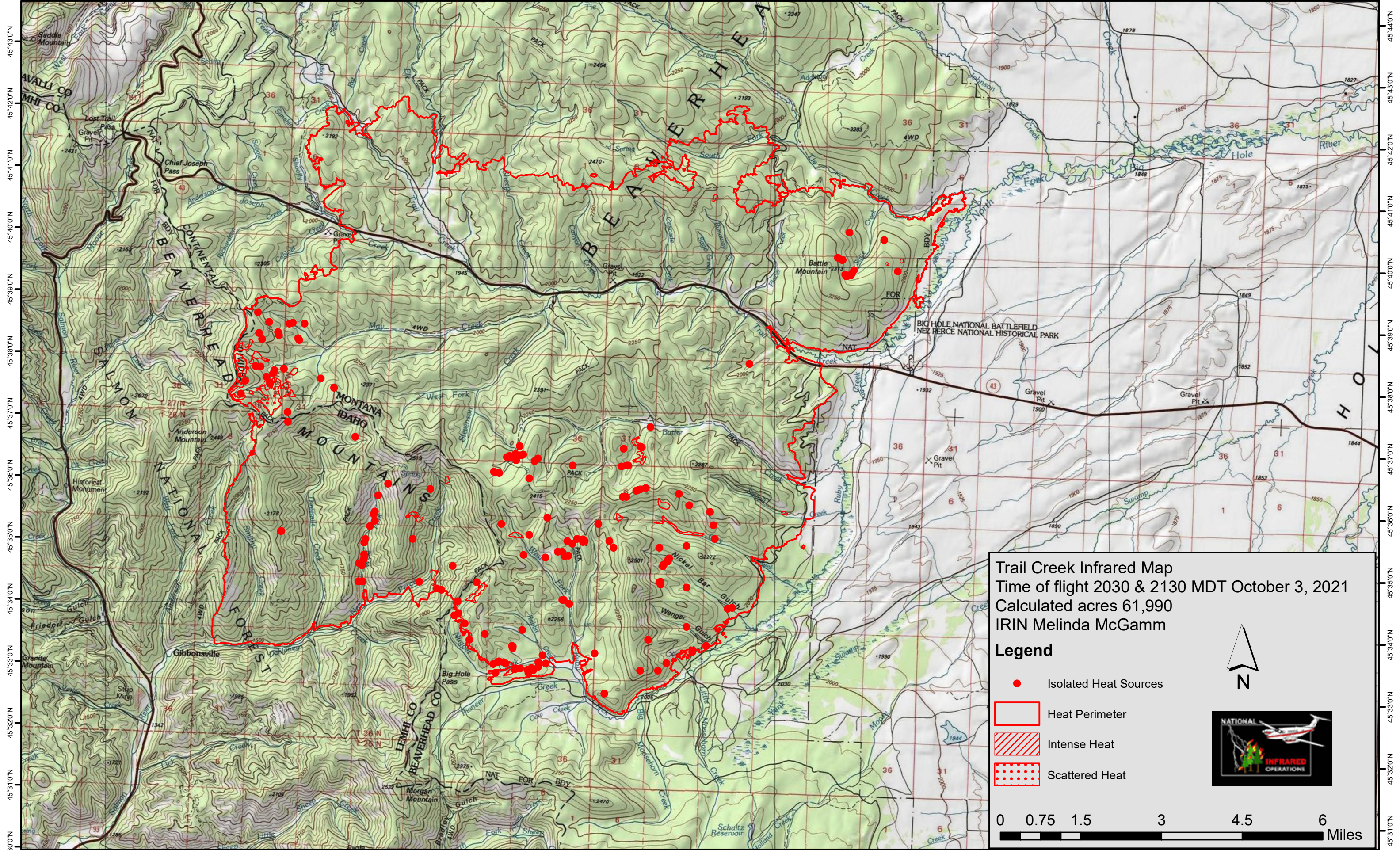


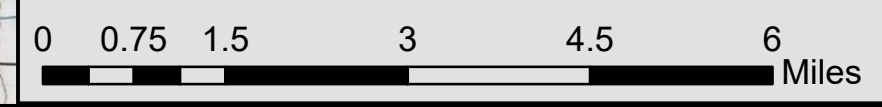
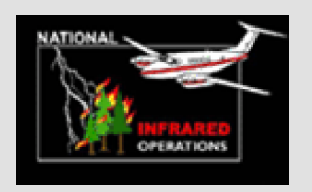
113°59'0"W 113°58'0"W 113°57'0"W 113°56'0"W 113°55'0"W 113°54'0"W 113°53'0"W 113°52'0"W 113°51'0"W 113°50'0"W 113°49'0"W 113°48'0"W 113°47'0"W 113°46'0"W 113°45'0"W 113°44'0"W 113°43'0"W 113°42'0"W 113°41'0"W 113°40'0"W 113°39'0"W 113°38'0"W 113°37'0"W 113°36'0"W 113°35'0"W 113°34'0"W 113°33'0"W 113°32'0"W 113°31'0"W 113°30'0"W 113°29'0"W



Trail Creek Infrared Map  
Time of flight 2030 & 2130 MDT October 3, 2021  
Calculated acres 61,990  
IRIN Melinda McGamm

**Legend**

- Isolated Heat Sources
- Heat Perimeter
- Intense Heat
- Scattered Heat



113°58'0"W 113°57'0"W 113°56'0"W 113°55'0"W 113°54'0"W 113°53'0"W 113°52'0"W 113°51'0"W 113°50'0"W 113°49'0"W 113°48'0"W 113°47'0"W 113°46'0"W 113°45'0"W 113°44'0"W 113°43'0"W 113°42'0"W 113°41'0"W 113°40'0"W 113°39'0"W 113°38'0"W 113°37'0"W 113°36'0"W 113°35'0"W 113°34'0"W 113°33'0"W 113°32'0"W 113°31'0"W 113°30'0"W 113°29'0"W