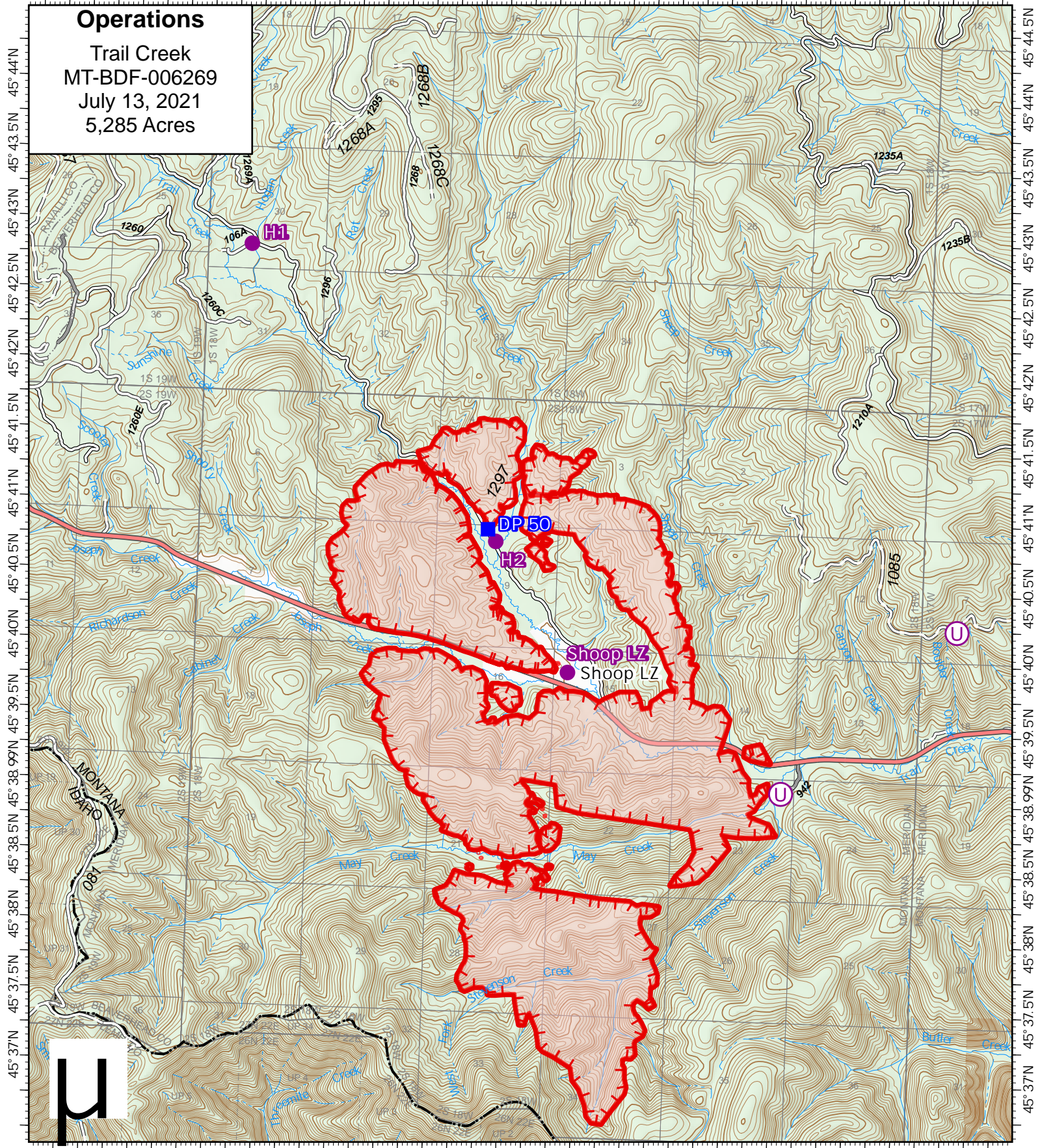


113°54.5'W 113°53.5'W 113°52.5'W 113°51.5'W 113°50.5'W 113°49.5'W 113°48.5'W 113°47.5'W 113°46.5'W 113°45.5'W








Operations
Trail Creek
MT-BDF-006269
July 13, 2021
5,285 Acres

113°54.5'W 113°53.5'W 113°52.5'W 113°51.5'W 113°50.5'W 113°49.5'W 113°48.5'W 113°47.5'W 113°46.5'W 113°45.5'W



Acres from IR on
7/12/2021 2123
0 0.3 0.7 1
Miles
1 inch equals 12 miles
Scale: 1:65,000

-  Fire Edge
-  Wildfire Daily Fire Perimeter
-  Helispot
-  Unimproved Landing Area
-  Drop Point