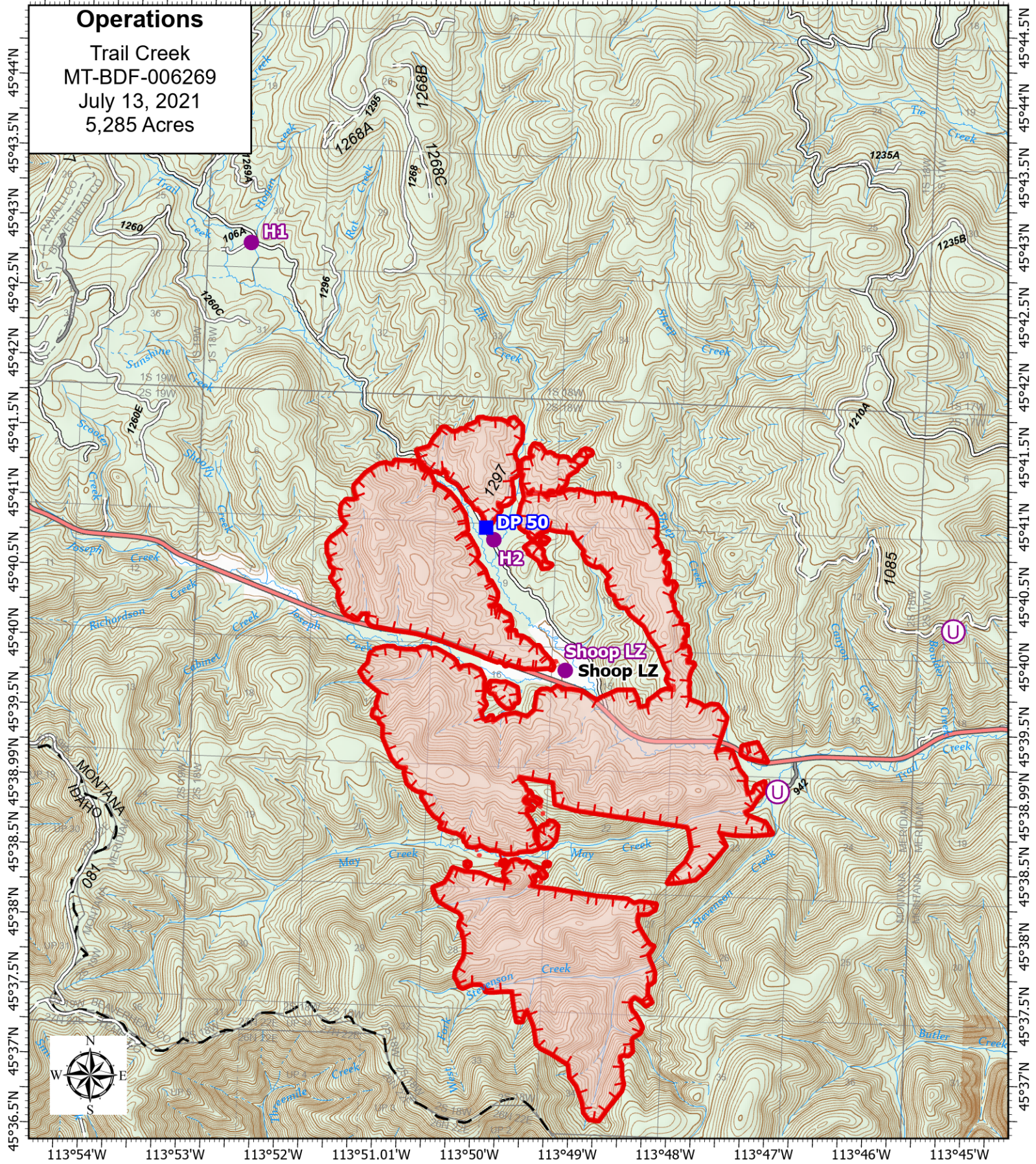


113°54.5'W 113°53.5'W 113°52.5'W 113°51.5'W 113°50.5'W 113°49.5'W 113°48.5'W 113°47.5'W 113°46.5'W 113°45.5'W

Operations

Trail Creek
MT-BDF-006269
July 13, 2021
5,285 Acres



Acres from IR on
7/12/2021 2123

0 0.3 0.7 1
Miles

1 inch equals 12 miles
Scale: 1:65,000

- ▬ Fire Edge
- Wildfire Daily Fire Perimeter
- Helispot
- Unimproved Landing Area
- Drop Point

113°54'W 113°53'W 113°52'W 113°51.01'W 113°50'W 113°49'W 113°48'W 113°47'W 113°46'W 113°45'W

45°36.5'N 45°37.5'N 45°38.5'N 45°38.99'N 45°39.5'N 45°39.99'N 45°40.5'N 45°41.5'N 45°42.5'N 45°43.5'N 45°44.5'N