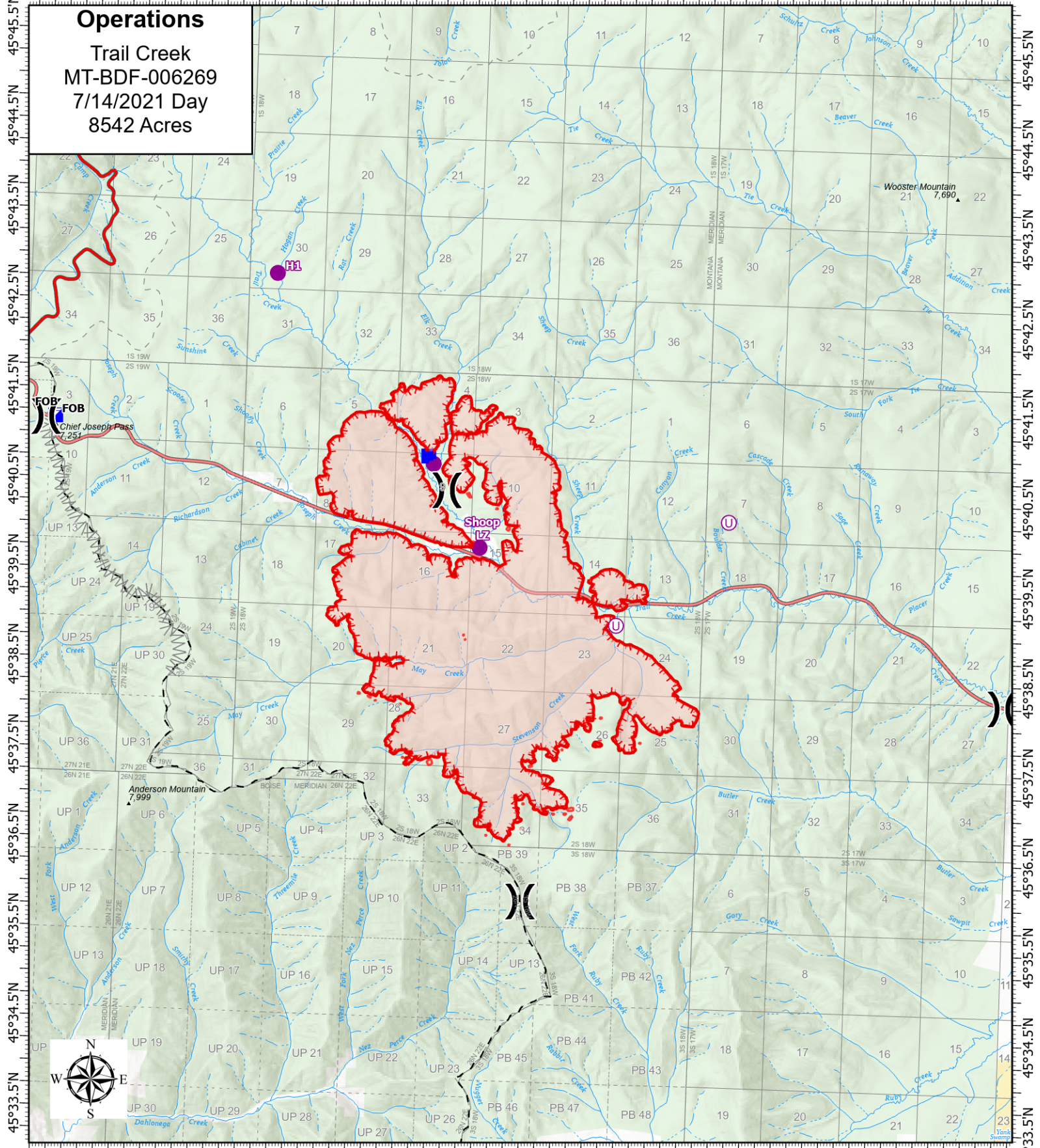


113°56.5'W 113°55'W 113°54'W 113°53'W 113°52'W 113°50.5'W 113°49'W 113°48'W 113°47'W 113°46'W 113°45'W 113°44'W 113°43'W 113°42'W



**Operations**  
 Trail Creek  
 MT-BDF-006269  
 7/14/2021 Day  
 8542 Acres

113°56'W 113°55'W 113°54'W 113°53'W 113°52'W 113°50.5'W 113°49'W 113°48'W 113°47'W 113°46'W 113°45'W 113°44'W 113°43'W 113°42'W 113°41'W



Acres from IR on  
 7/13/2021 2139

0 0.6 1.2 1.8 Miles

1 inch equals 19 miles  
 Scale: 1:101,563

- Planned Fuel Break
- Fire Edge
- Wildfire Daily Fire Perimeter
- Helispot
- Unimproved Landing Area
- Incident Command Post
- Drop Point
- Division Break
- Fire Edge
- Helispot