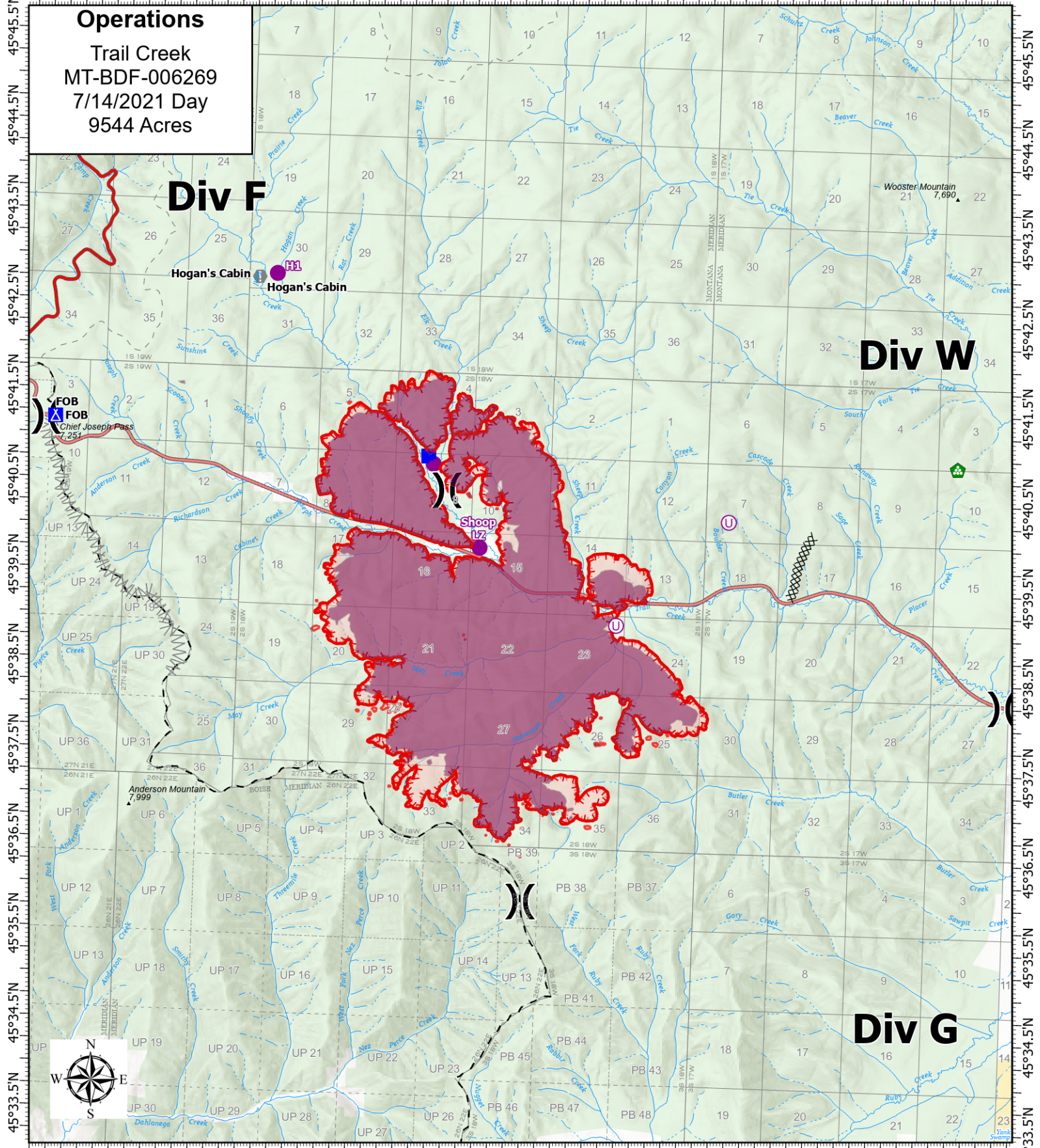


113°56.5'W 113°55'W 113°54'W 113°53'W 113°52'W 113°50.5'W 113°49'W 113°48'W 113°47'W 113°46'W 113°45'W 113°44'W 113°43'W 113°42'W



Operations
 Trail Creek
 MT-BDF-006269
 7/14/2021 Day
 9544 Acres

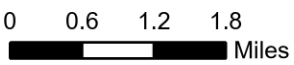
Div F

Div W

Div G



Acres from IR on
 7/14/2021 2246



1 inch equals 19 miles
 Scale: 1:101,563

- ⊗ Completed Dozer Line
- ⌘ Planned Fuel Break
- Fire Edge
- Wildfire Daily Fire Perimeter
- Helispot
- ⊙ Unimproved Landing Area
- ⌘ Division Break
- Drop Point
- ⊠ Camp
- Ⓢ Value at Risk