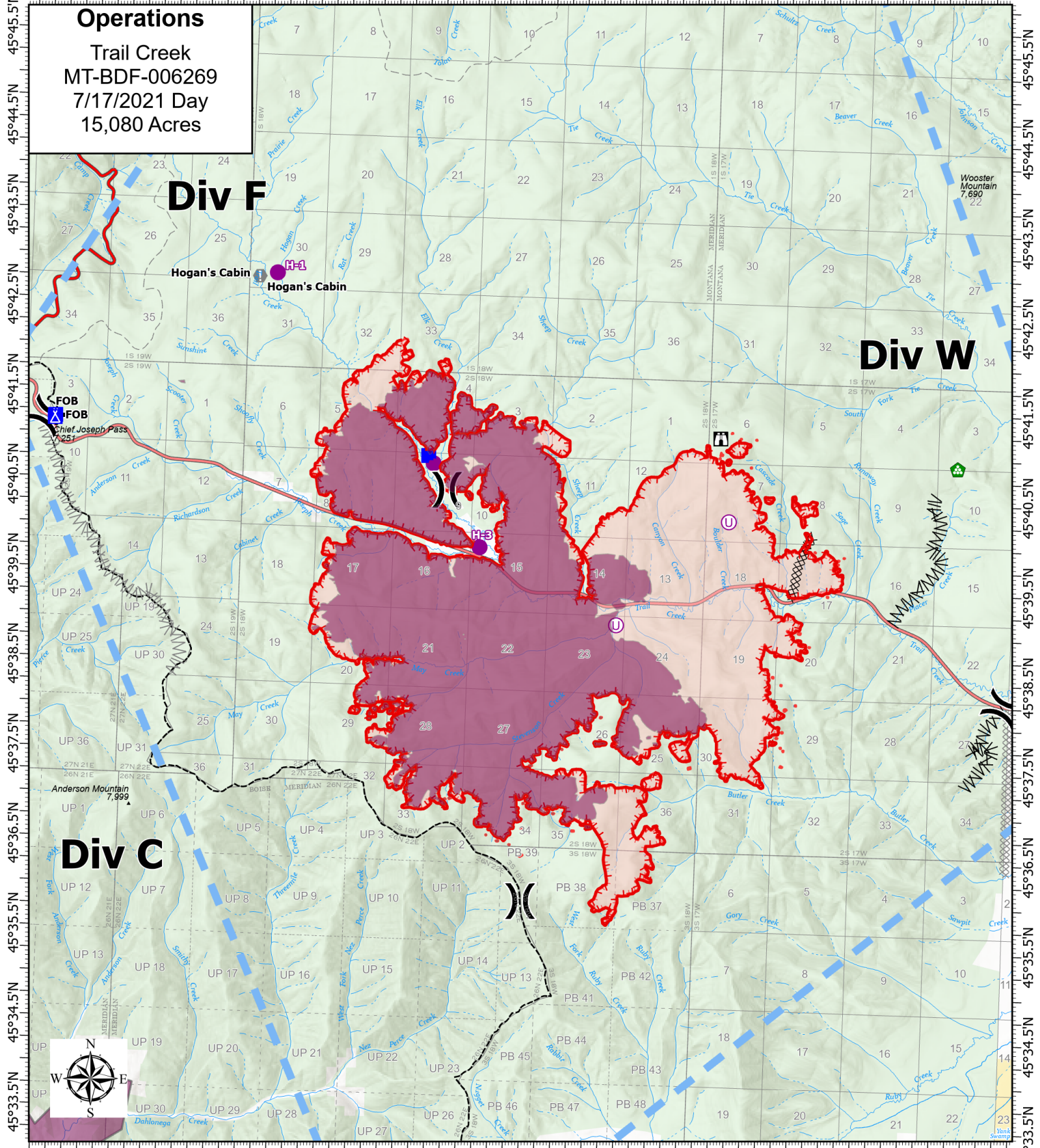


113°56.5'W 113°55'W 113°54'W 113°53'W 113°52'W 113°50.5'W 113°49'W 113°48'W 113°47'W 113°46'W 113°45'W 113°44'W 113°43'W 113°42'W



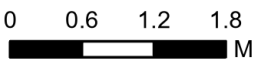
Operations
 Trail Creek
 MT-BDF-006269
 7/17/2021 Day
 15,080 Acres

Div F

Div W

Div C

Acres from IR on
 7/16/2021 2249



1 inch equals 19 miles
 Scale: 1:101,563

- ⊗ Completed Dozer Line
- ∕ Completed Fuel Break
- ⊗ Planned Dozer Line
- ∕ Planned Fuel Break
- Temporary Flight Restriction

- ▬ Fire Edge
- Other
- ▬ Wildfire Daily Fire Perimeter
- Helispot
- ⊕ Unimproved Landing Area

-)) Division Break
- Drop Point
- ▲ Camp
- ⌘ Lookout

