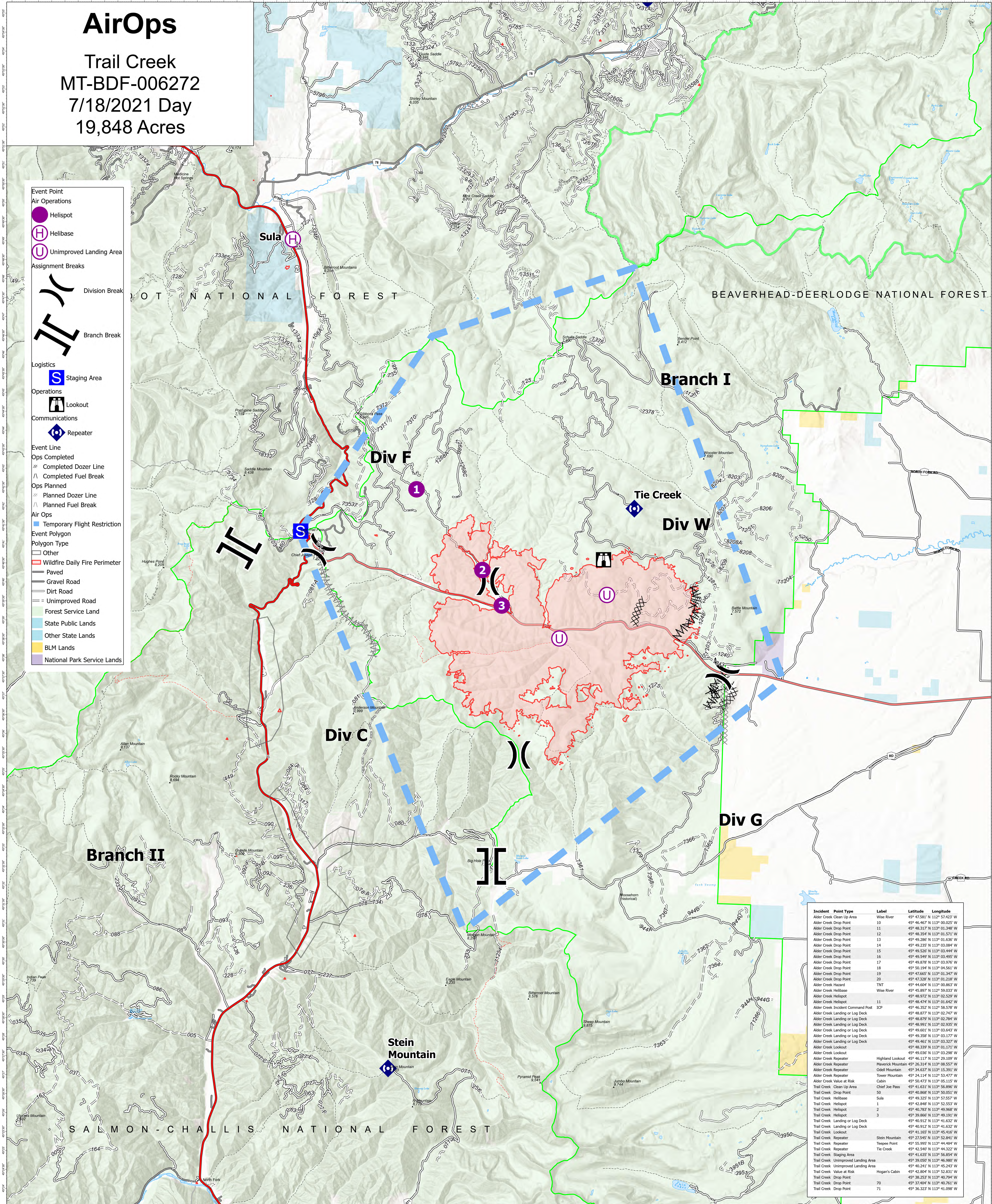


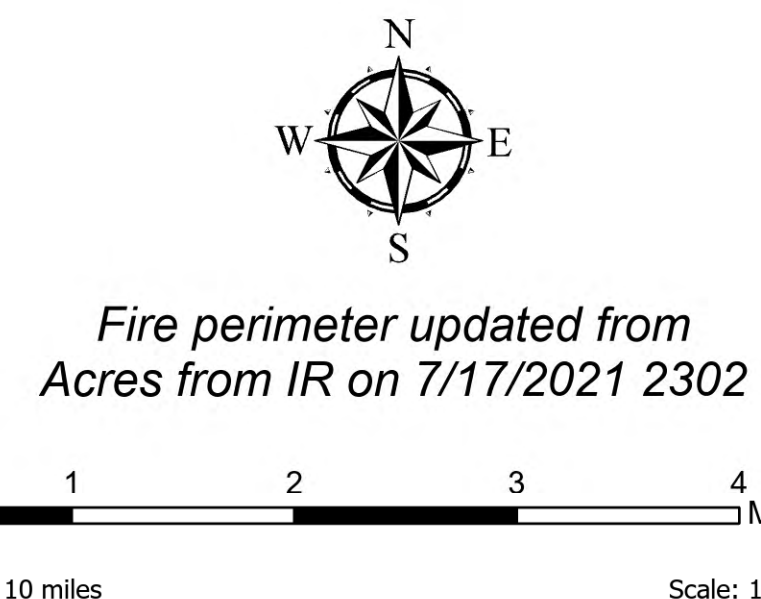
AirOps

Trail Creek
MT-BDF-006272
7/18/2021 Day
19,848 Acres

- Event Point
- Air Operations
 - Helispot
 - H Helibase
 - U Unimproved Landing Area
- Assignment Breaks
 -) Division Break
 -] [Branch Break
- Logistics
 - S Staging Area
- Operations
 - ⌘ Lookout
- Communications
 - R Repeater
- Event Line
 - Ops Completed
 - Completed Dozer Line
 - Completed Fuel Break
 - Ops Planned
 - Planned Dozer Line
 - Planned Fuel Break
- Air Ops
 - Temporary Flight Restriction
- Event Polygon
- Polygon Type
 - Other
 - Wildfire Daily Fire Perimeter
 - Paved
 - Gravel Road
 - Dirt Road
 - Unimproved Road
 - Forest Service Land
 - State Public Lands
 - Other State Lands
 - BLM Lands
 - National Park Service Lands



Incident	Point Type	Label	Latitude	Longitude
Alder Creek Clean Up Area		Wise River	45° 47.581' N 112° 57.423' W	
Alder Creek Drop Point	10		45° 46.467' N 113° 00.025' W	
Alder Creek Drop Point	11		45° 48.317' N 113° 01.348' W	
Alder Creek Drop Point	12		45° 48.354' N 113° 01.571' W	
Alder Creek Drop Point	13		45° 49.288' N 113° 01.636' W	
Alder Creek Drop Point	14		45° 49.235' N 113° 03.094' W	
Alder Creek Drop Point	15		45° 48.528' N 113° 03.844' W	
Alder Creek Drop Point	16		45° 49.549' N 113° 03.495' W	
Alder Creek Drop Point	17		45° 49.878' N 113° 03.976' W	
Alder Creek Drop Point	18		45° 50.194' N 113° 04.261' W	
Alder Creek Drop Point	19		45° 47.665' N 113° 01.347' W	
Alder Creek Drop Point	20		45° 47.328' N 113° 01.218' W	
Alder Creek Hazard	TNT		45° 44.604' N 113° 00.863' W	
Alder Creek Helibase		Wise River	45° 48.897' N 112° 59.033' W	
Alder Creek Helibase			45° 48.972' N 113° 02.529' W	
Alder Creek Helispot			45° 48.474' N 113° 01.642' W	
Alder Creek Incident Command Post	JCP		45° 46.352' N 112° 58.578' W	
Alder Creek Landing or Log Deck			45° 48.877' N 113° 02.747' W	
Alder Creek Landing or Log Deck			45° 48.879' N 113° 02.784' W	
Alder Creek Landing or Log Deck			45° 48.991' N 113° 02.935' W	
Alder Creek Landing or Log Deck			45° 49.601' N 113° 03.643' W	
Alder Creek Landing or Log Deck			45° 48.352' N 113° 01.632' W	
Alder Creek Landing or Log Deck			45° 49.461' N 113° 03.327' W	
Alder Creek Landing or Log Deck			45° 48.339' N 113° 01.171' W	
Alder Creek Lookout			45° 49.036' N 113° 03.288' W	
Alder Creek Repeater		Highland Lookout	45° 46.117' N 113° 28.289' W	
Alder Creek Repeater		Maverick Mountain	45° 26.314' N 113° 08.537' W	
Alder Creek Repeater		Odell Mountain	45° 34.637' N 113° 15.391' W	
Alder Creek Repeater		Tower Mountain	45° 24.114' N 112° 53.477' W	
Alder Creek Values at Risk		Cabin	45° 50.472' N 113° 05.115' W	
Trail Creek Clean Up Area		Chief Joe Pass	45° 41.631' N 113° 56.896' W	
Trail Creek Drop Point	50		45° 40.868' N 113° 50.051' W	
Trail Creek Helibase		Sula	45° 49.325' N 113° 57.557' W	
Trail Creek Helispot	1		45° 42.848' N 113° 52.523' W	
Trail Creek Helispot	2		45° 40.782' N 113° 49.968' W	
Trail Creek Helispot	3		45° 39.866' N 113° 49.191' W	
Trail Creek Landing or Log Deck			45° 40.912' N 113° 41.632' W	
Trail Creek Landing or Log Deck			45° 40.912' N 113° 41.632' W	
Trail Creek Lookout			45° 41.165' N 113° 45.416' W	
Trail Creek Repeater		Stein Mountain	45° 27.545' N 113° 52.841' W	
Trail Creek Repeater		Tepees Point	45° 55.995' N 113° 44.494' W	
Trail Creek Staging Area		Tie Creek	45° 41.635' N 113° 56.854' W	
Trail Creek Unimproved Landing Area			45° 39.050' N 113° 46.980' W	
Trail Creek Unimproved Landing Area			45° 40.241' N 113° 45.243' W	
Trail Creek Values at Risk		Hogan's Cabin	45° 43.804' N 113° 52.311' W	
Trail Creek Drop Point	70		45° 38.253' N 113° 40.794' W	
Trail Creek Drop Point	71		45° 37.404' N 113° 40.761' W	
Trail Creek Drop Point	71		45° 36.322' N 113° 41.098' W	



Flight Restriction Information
Alder Creek - 1/8950 - 12,000ft ceiling
Trail Creek - 1/8951 - 12,000ft ceiling

