

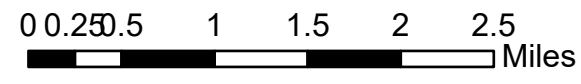
Transportation

Trail Creek

MT-BDF-006272

7/18/2021 Day

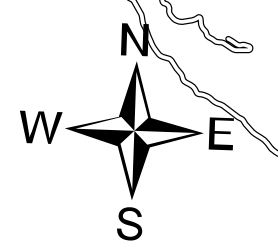
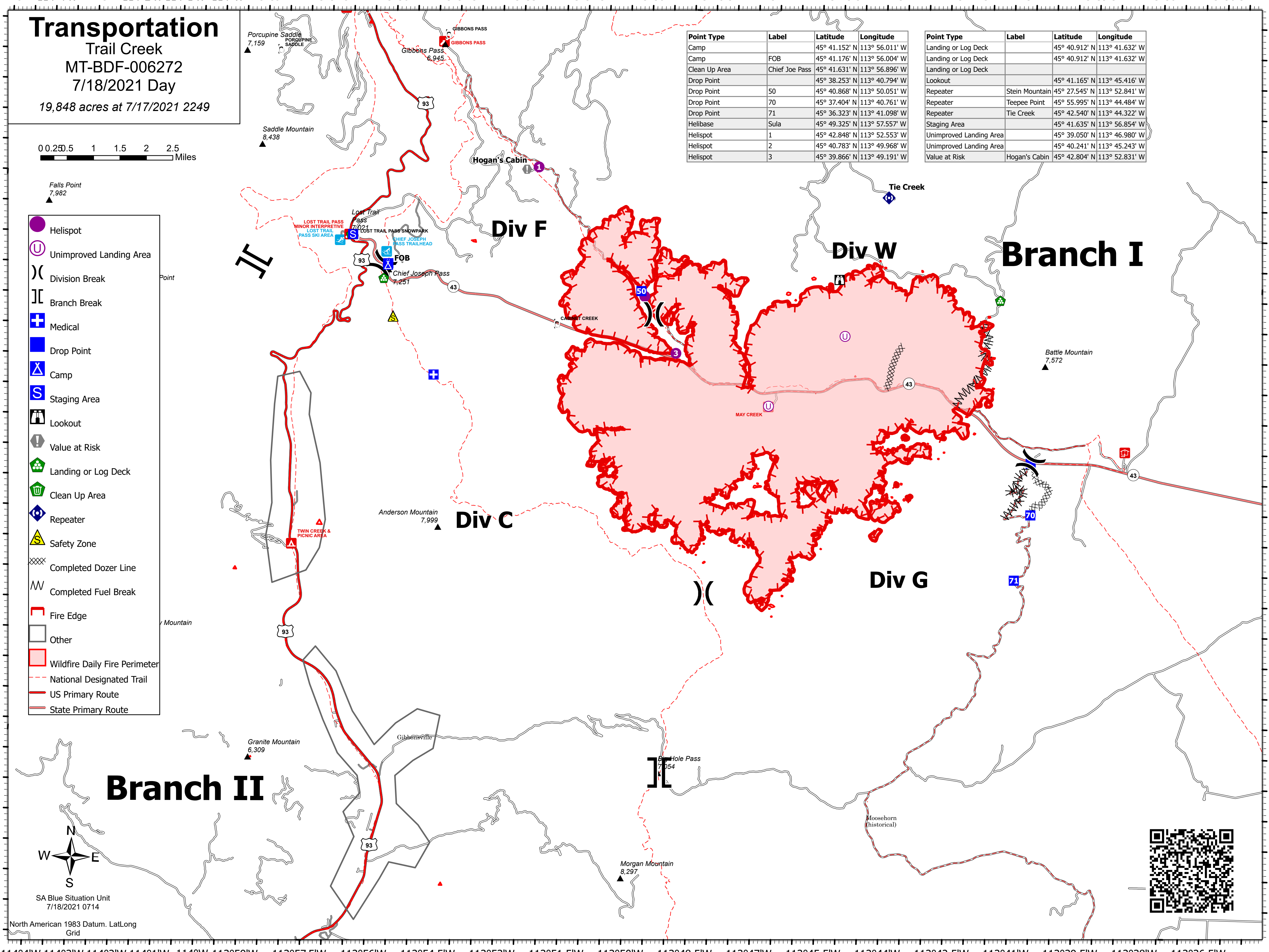
19,848 acres at 7/17/2021 2249



- Helispot
- Unimproved Landing Area
- Division Break
- Branch Break
- Medical
- Drop Point
- Camp
- Staging Area
- Lookout
- Value at Risk
- Landing or Log Deck
- Clean Up Area
- Repeater
- Safety Zone
- Completed Dozer Line
- Completed Fuel Break
- Fire Edge
- Other
- Wildfire Daily Fire Perimeter
- National Designated Trail
- US Primary Route
- State Primary Route

Point Type	Label	Latitude	Longitude
Camp		45° 41.152' N	113° 56.011' W
Camp	FOB	45° 41.176' N	113° 56.004' W
Clean Up Area	Chief Joe Pass	45° 41.631' N	113° 56.896' W
Drop Point		45° 38.253' N	113° 40.794' W
Drop Point	50	45° 40.868' N	113° 50.051' W
Drop Point	70	45° 37.404' N	113° 40.761' W
Drop Point	71	45° 36.323' N	113° 41.098' W
Helibase	Sula	45° 49.325' N	113° 57.557' W
Helispot	1	45° 42.848' N	113° 52.553' W
Helispot	2	45° 40.783' N	113° 49.968' W
Helispot	3	45° 39.866' N	113° 49.191' W

Point Type	Label	Latitude	Longitude
Landing or Log Deck		45° 40.912' N	113° 41.632' W
Landing or Log Deck		45° 40.912' N	113° 41.632' W
Landing or Log Deck			
Lookout		45° 41.165' N	113° 45.416' W
Repeater	Stein Mountain	45° 27.545' N	113° 52.841' W
Repeater	Teepee Point	45° 55.995' N	113° 44.484' W
Repeater	Tie Creek	45° 42.540' N	113° 44.322' W
Staging Area		45° 41.635' N	113° 56.854' W
Unimproved Landing Area		45° 39.050' N	113° 46.980' W
Unimproved Landing Area		45° 40.241' N	113° 45.243' W
Value at Risk	Hogan's Cabin	45° 42.804' N	113° 52.831' W



SA Blue Situation Unit
7/18/2021 0714

North American 1983 Datum. Lat/Long
Grid

