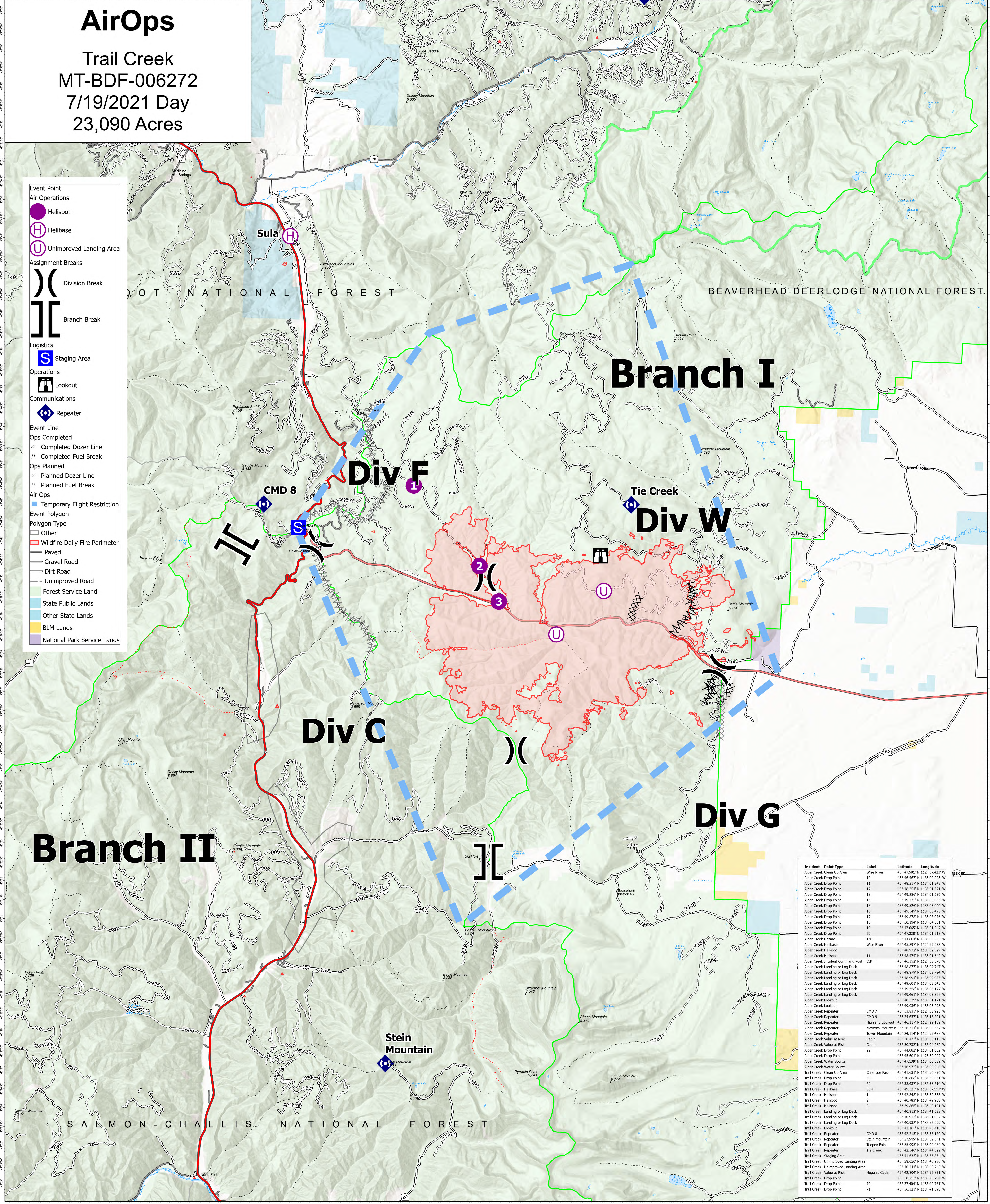


# AirOps

Trail Creek  
MT-BDF-006272  
7/19/2021 Day  
23,090 Acres

- Event Point
- Air Operations
  - Helispot
  - H Helibase
  - U Unimproved Landing Area
- Assignment Breaks
  - )( Division Break
  - ][ Branch Break
- Logistics
  - S Staging Area
- Operations
  - H Lookout
- Communications
  - R Repeater
- Event Line
  - Ops Completed
  - - - Completed Dozer Line
  - / / / Completed Fuel Break
  - - - Ops Planned
  - - - Planned Dozer Line
  - / / / Planned Fuel Break
- Air Ops
  - Temporary Flight Restriction
- Event Polygon
  - Other
  - Wildfire Daily Fire Perimeter
- Polygon Type
  - Paved
  - Gravel Road
  - Dirt Road
  - Unimproved Road
  - Forest Service Land
  - State Public Lands
  - Other State Lands
  - BLM Lands
  - National Park Service Lands



Incident	Point Type	Label	Latitude	Longitude
Alder Creek	Clean Up Area	Wise River	45° 47.581' N 112° 57.427' W	
Alder Creek	Drop Point	10	45° 46.467' N 113° 00.025' W	
Alder Creek	Drop Point	11	45° 48.317' N 113° 01.348' W	
Alder Creek	Drop Point	12	45° 48.354' N 113° 01.571' W	
Alder Creek	Drop Point	13	45° 49.285' N 113° 01.636' W	
Alder Creek	Drop Point	14	45° 49.235' N 113° 03.084' W	
Alder Creek	Drop Point	15	45° 49.520' N 113° 03.444' W	
Alder Creek	Drop Point	16	45° 49.549' N 113° 03.493' W	
Alder Creek	Drop Point	17	45° 49.870' N 113° 03.972' W	
Alder Creek	Drop Point	18	45° 50.194' N 113° 04.561' W	
Alder Creek	Drop Point	19	45° 47.665' N 113° 01.347' W	
Alder Creek	Drop Point	20	45° 47.328' N 113° 01.218' W	
Alder Creek	Hazard	TNT	45° 44.609' N 113° 08.863' W	
Alder Creek	Helibase	Wise River	45° 45.897' N 112° 59.033' W	
Alder Creek	Helispot		45° 48.972' N 113° 02.529' W	
Alder Creek	Helispot		45° 46.494' N 113° 01.642' W	
Alder Creek	Incident Command Post	ICP	45° 46.352' N 113° 58.578' W	
Alder Creek	Landing or Log Deck		45° 48.877' N 113° 02.747' W	
Alder Creek	Landing or Log Deck		45° 48.879' N 113° 02.794' W	
Alder Creek	Landing or Log Deck		45° 48.991' N 113° 02.937' W	
Alder Creek	Landing or Log Deck		45° 49.601' N 113° 03.643' W	
Alder Creek	Landing or Log Deck		45° 49.358' N 113° 03.177' W	
Alder Creek	Landing or Log Deck		45° 49.461' N 113° 03.327' W	
Alder Creek	Lookout		45° 48.339' N 113° 01.171' W	
Alder Creek	Lookout		45° 49.030' N 113° 03.298' W	
Alder Creek	Repeater	CMD 7	45° 53.832' N 112° 58.923' W	
Alder Creek	Repeater	CMD 5	45° 34.637' N 113° 15.291' W	
Alder Creek	Repeater	Highland Lookout	45° 46.117' N 113° 28.207' W	
Alder Creek	Repeater	Maverick Mountain	45° 26.314' N 113° 08.557' W	
Alder Creek	Repeater	Tower Mountain	45° 24.114' N 112° 53.477' W	
Alder Creek	Value at Risk	Cabin	45° 50.472' N 113° 05.115' W	
Alder Creek	Value at Risk	Cabin	45° 48.722' N 113° 04.282' W	
Alder Creek	Drop Point	22	45° 44.082' N 113° 01.052' W	
Alder Creek	Drop Point	c	45° 45.601' N 112° 59.992' W	
Alder Creek	Water Source		45° 43.139' N 113° 00.529' W	
Alder Creek	Water Source		45° 46.972' N 113° 00.048' W	
Trail Creek	Clean Up Area	Chief Joe Pass	45° 41.631' N 113° 56.896' W	
Trail Creek	Drop Point	50	45° 40.868' N 113° 50.051' W	
Trail Creek	Drop Point	69	45° 36.437' N 113° 38.614' W	
Trail Creek	Helibase	Sula	45° 49.325' N 113° 57.557' W	
Trail Creek	Helispot	1	45° 42.848' N 113° 52.553' W	
Trail Creek	Helispot	2	45° 40.783' N 113° 49.968' W	
Trail Creek	Helispot	3	45° 41.165' N 113° 45.416' W	
Trail Creek	Landing or Log Deck		45° 40.912' N 113° 41.632' W	
Trail Creek	Landing or Log Deck		45° 40.912' N 113° 41.632' W	
Trail Creek	Landing or Log Deck		45° 40.932' N 113° 56.099' W	
Trail Creek	Lookout		45° 41.165' N 113° 45.416' W	
Trail Creek	Repeater	CMD 8	45° 42.215' N 113° 58.179' W	
Trail Creek	Repeater	Stein Mountain	45° 27.545' N 113° 52.841' W	
Trail Creek	Repeater	Texope Point	45° 55.995' N 113° 44.484' W	
Trail Creek	Repeater	Tie Creek	45° 43.549' N 113° 44.527' W	
Trail Creek	Staging Area		45° 41.632' N 113° 56.894' W	
Trail Creek	Unimproved Landing Area		45° 39.050' N 113° 46.980' W	
Trail Creek	Unimproved Landing Area		45° 40.241' N 113° 45.243' W	
Trail Creek	Value at Risk	Hogan's Cabin	45° 42.894' N 113° 52.831' W	
Trail Creek	Drop Point		45° 38.253' N 113° 40.794' W	
Trail Creek	Drop Point	70	45° 37.404' N 113° 40.761' W	
Trail Creek	Drop Point	71	45° 36.323' N 113° 41.098' W	

Flight Restriction Information  
Alder Creek - 1/8950 - 12,000ft ceiling  
Trail Creek - 1/8951 - 12,000ft ceiling



SA Blue Team  
7/19/2021 0936  
North American 1983 Datum. LatLong Grid

Fire perimeter updated from Acres from IR on 7/18/2021 2105

Scale: 1:54,688  
1 inch equals 10 miles