

114°3.5'W 114°1.5'W 114°W 113°58'W 113°56'W 113°54'W 113°52'W 113°50'W 113°48'W 113°46'W 113°44'W 113°42'W 113°40'W 113°38'W

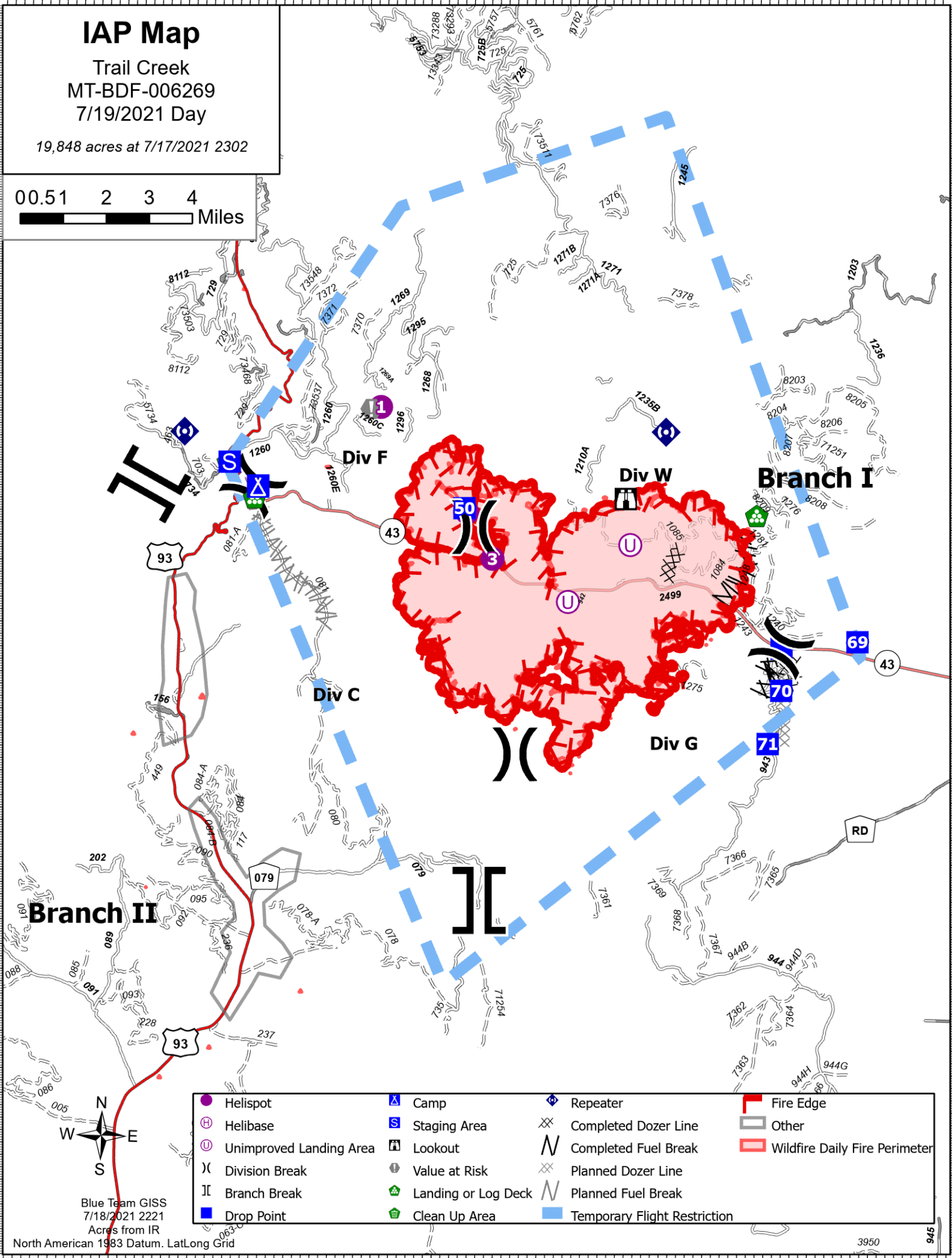
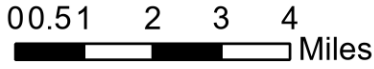
45°26'N 45°27'N 45°28'N 45°29'N 45°30'N 45°31'N 45°32'N 45°33'N 45°34'N 45°35'N 45°36'N 45°37'N 45°38'N 45°39.5'N 45°41'N 45°42'N 45°43'N 45°44'N 45°45'N 45°46'N 45°47'N 45°48'N 45°49'N 45°50'N 45°51'N

45°26'N 45°27'N 45°28'N 45°29'N 45°30'N 45°31'N 45°32'N 45°33'N 45°34'N 45°35'N 45°36'N 45°37'N 45°38'N 45°39.5'N 45°41'N 45°42'N 45°43'N 45°44'N 45°45'N 45°46'N 45°47'N 45°48'N 45°49'N 45°50'N 45°51'N

IAP Map

Trail Creek
MT-BDF-006269
7/19/2021 Day

19,848 acres at 7/17/2021 2302



	Helispot		Camp		Repeater		Fire Edge
	Helibase		Staging Area		Completed Dozer Line		Other
	Unimproved Landing Area		Lookout		Completed Fuel Break		Wildfire Daily Fire Perimeter
	Division Break		Value at Risk		Planned Dozer Line		
	Branch Break		Landing or Log Deck		Planned Fuel Break		
	Drop Point		Clean Up Area		Temporary Flight Restriction		



Blue Team GISS
7/18/2021 2221
Acres from IR
North American 1983 Datum. LatLong Grid

114°2.5'W 114°0.5'W 113°58.51'W 113°56'W 113°54'W 113°52'W 113°50'W 113°48'W 113°46'W 113°44'W 113°42'W 113°40'W 113°38'W 113°36.01'W